

# PHILIPPINE BIDDING DOCUMENTS

## Procurement of the Two Storey Data Center Phase 2

*ABC = Seven Million Seven Hundred Ninety Two  
Thousand Eight Hundred Sixty Six Pesos and Twenty  
Three Centavos  
(Php 7,792,866.23)*

Government of the Republic of the Philippines  
UNIVERSITY OF THE PHILIPPINES CEBU



**Sixth Edition  
July 2020**

# TABLE OF CONTENTS

<b>Glossary of Terms, Abbreviations, and Acronyms.....</b>	<b>4</b>
<b>Section I. Invitation to Bid .....</b>	<b>7</b>
<b>Section II. Instructions to Bidders.....</b>	<b>9</b>
1. Scope of Bid.....	9
2. Funding Information .....	9
3. Bidding Requirements.....	9
4. Corrupt, Fraudulent, Collusive, Coercive, and Obstructive Practices .....	9
5. Eligible Bidders.....	10
6. Origin of Associated Goods .....	10
7. Subcontracts .....	10
8. Pre-Bid Conference.....	11
9. Clarification and Amendment of Bidding Documents.....	11
10. Documents Comprising the Bid: Eligibility and Technical Components.....	11
11. Documents Comprising the Bid: Financial Component .....	12
12. Alternative Bids .....	12
13. Bid Prices .....	12
14. Bid and Payment Currencies.....	12
15. Bid Security.....	12
16. Sealing and Marking of Bids.....	13
17. Deadline for Submission of Bids .....	13
18. Opening and Preliminary Examination of Bids .....	13
19. Detailed Evaluation and Comparison of Bids.....	13
20. Post Qualification.....	14
21. Signing of the Contract .....	14
<b>Section III. Bid Data Sheet.....</b>	<b>15</b>
<b>Section IV. General Conditions of Contract .....</b>	<b>16</b>
1. Scope of Contract.....	16
2. Sectional Completion of Works .....	16
3. Possession of Site.....	16
4. The Contractor’s Obligations.....	16
5. Performance Security .....	17
6. Site Investigation Reports .....	17

7.	Warranty.....	17
8.	Liability of the Contractor.....	17
9.	Termination for Other Causes.....	17
10.	Dayworks .....	18
11.	Program of Work.....	18
12.	Instructions, Inspections and Audits .....	18
13.	Advance Payment.....	18
14.	Progress Payments .....	18
15.	Operating and Maintenance Manuals.....	19
<b>Section V. Special Conditions of Contract.....</b>		<b>20</b>
<b>Section VI. Specifications .....</b>		<b>21</b>
<b>Section VII. Drawings.....</b>		<b>24</b>
<b>Section VIII. Bill of Quantities .....</b>		<b>25</b>
<b>Section IX. Checklist of Technical and Financial Documents.....</b>		<b>29</b>

# ***Glossary of Terms, Abbreviations, and Acronyms***

**ABC** – Approved Budget for the Contract.

**ARCC** – Allowable Range of Contract Cost.

**BAC** – Bids and Awards Committee.

**Bid** – A signed offer or proposal to undertake a contract submitted by a bidder in response to and in consonance with the requirements of the bidding documents. Also referred to as *Proposal* and *Tender*. (2016 revised IRR, Section 5[c])

**Bidder** – Refers to a contractor, manufacturer, supplier, distributor and/or consultant who submits a bid in response to the requirements of the Bidding Documents. (2016 revised IRR, Section 5[d])

**Bidding Documents** – The documents issued by the Procuring Entity as the bases for bids, furnishing all information necessary for a prospective bidder to prepare a bid for the Goods, Infrastructure Projects, and/or Consulting Services required by the Procuring Entity. (2016 revised IRR, Section 5[e])

**BIR** – Bureau of Internal Revenue.

**BSP** – Bangko Sentral ng Pilipinas.

**CDA** – Cooperative Development Authority.

**Consulting Services** – Refer to services for Infrastructure Projects and other types of projects or activities of the GOP requiring adequate external technical and professional expertise that are beyond the capability and/or capacity of the GOP to undertake such as, but not limited to: (i) advisory and review services; (ii) pre-investment or feasibility studies; (iii) design; (iv) construction supervision; (v) management and related services; and (vi) other technical services or special studies. (2016 revised IRR, Section 5[i])

**Contract** – Refers to the agreement entered into between the Procuring Entity and the Supplier or Manufacturer or Distributor or Service Provider for procurement of Goods and Services; Contractor for Procurement of Infrastructure Projects; or Consultant or Consulting Firm for Procurement of Consulting Services; as the case may be, as recorded in the Contract Form signed by the parties, including all attachments and appendices thereto and all documents incorporated by reference therein.

**Contractor** – is a natural or juridical entity whose proposal was accepted by the Procuring Entity and to whom the Contract to execute the Work was awarded. Contractor as used in these Bidding Documents may likewise refer to a supplier, distributor, manufacturer, or consultant.

**CPI** – Consumer Price Index.

**DOLE** – Department of Labor and Employment.

**DTI** – Department of Trade and Industry.

**Foreign-funded Procurement or Foreign-Assisted Project** – Refers to procurement whose funding source is from a foreign government, foreign or international financing institution as specified in the Treaty or International or Executive Agreement. (2016 revised IRR, Section 5[b]).

**GFI** – Government Financial Institution.

**GOCC** – Government-owned and/or –controlled corporation.

**Goods** – Refer to all items, supplies, materials and general support services, except Consulting Services and Infrastructure Projects, which may be needed in the transaction of public businesses or in the pursuit of any government undertaking, project or activity, whether in the nature of equipment, furniture, stationery, materials for construction, or personal property of any kind, including non-personal or contractual services such as the repair and maintenance of equipment and furniture, as well as trucking, hauling, janitorial, security, and related or analogous services, as well as procurement of materials and supplies provided by the Procuring Entity for such services. The term “related” or “analogous services” shall include, but is not limited to, lease or purchase of office space, media advertisements, health maintenance services, and other services essential to the operation of the Procuring Entity. (2016 revised IRR, Section 5[r])

**GOP** – Government of the Philippines.

**Infrastructure Projects** – Include the construction, improvement, rehabilitation, demolition, repair, restoration or maintenance of roads and bridges, railways, airports, seaports, communication facilities, civil works components of information technology projects, irrigation, flood control and drainage, water supply, sanitation, sewerage and solid waste management systems, shore protection, energy/power and electrification facilities, national buildings, school buildings, hospital buildings, and other related construction projects of the government. Also referred to as *civil works or works*. (2016 revised IRR, Section 5[u])

**LGUs** – Local Government Units.

**NFCC** – Net Financial Contracting Capacity.

**NGA** – National Government Agency.

**PCAB** – Philippine Contractors Accreditation Board.

**PhilGEPS** - Philippine Government Electronic Procurement System.

**Procurement Project** – refers to a specific or identified procurement covering goods, infrastructure project or consulting services. A Procurement Project shall be described, detailed, and scheduled in the Project Procurement Management Plan prepared by the agency which shall be consolidated in the procuring entity's Annual Procurement Plan. (GPPB Circular No. 06-2019 dated 17 July 2019)

**PSA** – Philippine Statistics Authority.

**SEC** – Securities and Exchange Commission.

**SLCC** – Single Largest Completed Contract.

**UN** – United Nations.

# ***Section I. Invitation to Bid***



## ***University of the Philippines Cebu***

### ***Invitation to Bid for the Procurement of the Two Storey Data Center Phase 2***

1. The *University of the Philippines Cebu*, through the intends to apply the sum of *Seven Million Seven Hundred Ninety Two Thousand Eight Hundred Sixty Six Pesos and Twenty Three Centavos (₱7,792,866.23)* being the Approved Budget for the Contract (ABC) to payments under the contract for the *Procurement of the Two Storey Data Center Phase 2*. Bids received in excess of the ABC shall be automatically rejected at bid opening.
2. The *University of the Philippines Cebu* now invites bids for the above Procurement Project. Completion of the Works is required *within one hundred fifty (150) calendar days*. Bidders should have completed a contract similar to the Project. The description of an eligible bidder is contained in the Bidding Documents, particularly, in Section II (Instructions to Bidders).
3. Bidding will be conducted through open competitive bidding procedures using non-discretionary “*pass/fail*” criterion as specified in the 2016 revised Implementing Rules and Regulations (IRR) of Republic Act (RA) No. 9184.
4. Interested bidders may obtain further information from *the UP Cebu Bids and Awards Committee Secretariat* and inspect the Bidding Documents at the address given below from *8:00AM- 4:00PM*.
5. A complete set of Bidding Documents may be acquired by interested bidders on *December 6, 2024* from given address and website/s below *and upon payment of the applicable fee for the Bidding Documents, pursuant to the latest Guidelines issued by the GPPB, in the amount of Ten Thousand Pesos (₱10,000.00)*. The Procuring Entity shall allow the bidder to present its proof of payment for the fees *in person or through email on or before the deadline for submission of bids*.
6. The *University of the Philippines Cebu* will hold a Pre-Bid Conference on *December 13, 2024 at 1:00PM* at the *UP Cebu BAC Office Ground Flr. College of Science Building* and/or through videoconferencing/webcasting via Zoom [Meeting ID: 963 3834 4835 PW: UPCBACPreB](#) which shall be open to prospective bidders.

7. Bids must be duly received by the BAC Secretariat through manual submission at the office address as indicated below, on or before *December 27, 2024 10:00AM*. Late bids shall not be accepted.
8. All bids must be accompanied by a bid security in any of the acceptable forms and in the amount stated in **ITB** Clause 16.
9. Bid opening shall be on *December 27, 2024 10:00AM* at the given address below UP Cebu BAC Office, Ground Flr. College of Science Bldg. Bids will be opened in the presence of the bidders' representatives who choose to attend the activity face to face or via Zoom [Meeting ID: 983 9167 8737 PWD: UPCBACOpen](#)
10. *Bidders are **required** to submit an electronic file of the scanned copy of their bid in a flash drive to be submitted together with their bid **inside the financial envelope**.*
11. The *University of the Philippines Cebu* reserves the right to reject any and all bids, declare a failure of bidding, or not award the contract at any time prior to contract award in accordance with Sections 35.6 and 41 of the 2016 revised Implementing Rules and Regulations (IRR) of RA No. 9184, without thereby incurring any liability to the affected bidder or bidders.
12. For further information, please refer to:

*Ginessa Rupinta  
BAC Secretariat Chair  
Bids and Awards Committee  
UP Cebu, Lahug, Cebu City  
bac\_sec.upcebu@up.edu.ph  
(032) 232-8187 loc 316*

13. You may visit the following websites:

For downloading of Bidding Documents:



*December 5, 2024*

---

*Lorel S. Dee, M.D.  
BAC Chair*



## ***Section II. Instructions to Bidders***

### **1. Scope of Bid**

The Procuring Entity, *the University of the Philippines Cebu* invites Bids for the Procurement of the Two Storey Data Center Phase 2, with Project Identification Number **I-2024-007**.

The Procurement Project (referred to herein as “Project”) is for the construction of Works, as described in Section VI (Specifications).

### **2. Funding Information**

2.1. The GOP through the source of funding as indicated below for **2024** in the amount of *Seven Million Seven Hundred Ninety Two Thousand Eight Hundred Sixty Six Pesos and Twenty Three Centavos (₱7,792,866.23)*.

2.2. The source of funding is:

NGA, the General Appropriations Act or Special Appropriations.

### **3. Bidding Requirements**

The Bidding for the Project shall be governed by all the provisions of RA No. 9184 and its 2016 revised IRR, including its Generic Procurement Manual and associated policies, rules and regulations as the primary source thereof, while the herein clauses shall serve as the secondary source thereof.

Any amendments made to the IRR and other GPPB issuances shall be applicable only to the ongoing posting, advertisement, or invitation to bid by the BAC through the issuance of a supplemental or bid bulletin.

The Bidder, by the act of submitting its Bid, shall be deemed to have inspected the site, determined the general characteristics of the contracted Works and the conditions for this Project, such as the location and the nature of the work; (b) climatic conditions; (c) transportation facilities; (c) nature and condition of the terrain, geological conditions at the site communication facilities, requirements, location and availability of construction aggregates and other materials, labor, water, electric power and access roads; and (d) other factors that may affect the cost, duration and execution or implementation of the contract, project, or work and examine all instructions, forms, terms, and project requirements in the Bidding Documents.

### **4. Corrupt, Fraudulent, Collusive, Coercive, and Obstructive Practices**

The Procuring Entity, as well as the Bidders and Contractors, shall observe the highest standard of ethics during the procurement and execution of the contract. They or through an agent shall not engage in corrupt, fraudulent, collusive, coercive, and

obstructive practices defined under Annex “I” of the 2016 revised IRR of RA No. 9184 or other integrity violations in competing for the Project.

## 5. Eligible Bidders

- 5.1. Only Bids of Bidders found to be legally, technically, and financially capable will be evaluated.
- 5.2. The Bidder must have an experience of having completed a Single Largest Completed Contract (SLCC) that is similar to this Project, equivalent to at least fifty percent (50%) of the ABC adjusted, if necessary, by the Bidder to current prices using the PSA’s CPI, except under conditions provided for in Section 23.4.2.4 of the 2016 revised IRR of RA No. 9184.

A contract is considered to be “similar” to the contract to be bid if it has the major categories of work stated in the **BDS**.

- 5.3. For Foreign-funded Procurement, the Procuring Entity and the foreign government/foreign or international financing institution may agree on another track record requirement, as specified in the Bidding Document prepared for this purpose.
- 5.4. The Bidders shall comply with the eligibility criteria under Section 23.4.2 of the 2016 IRR of RA No. 9184.

## 6. Origin of Associated Goods

There is no restriction on the origin of Goods other than those prohibited by a decision of the UN Security Council taken under Chapter VII of the Charter of the UN.

## 7. Subcontracts

- 7.1. The Bidder may subcontract portions of the Project to the extent allowed by the Procuring Entity as stated herein, but in no case more than fifty percent (50%) of the Project.

The Procuring Entity has prescribed that:

Subcontracting is allowed. The portions of Project and the maximum percentage allowed to be subcontracted are indicated in the **BDS**, which shall not exceed fifty percent (50%) of the contracted Works.

- 7.1. The Supplier may identify its subcontractor during the contract implementation stage. Subcontractors identified during the bidding may be changed during the implementation of this Contract. Subcontractors must submit the documentary requirements under Section 23.1 of the 2016 revised IRR of RA No. 9184 and comply with the eligibility criteria specified in **ITB** Clause 5 to the implementing or end-user unit.

- 7.2. Subcontracting of any portion of the Project does not relieve the Contractor of any liability or obligation under the Contract. The Supplier will be responsible for the acts, defaults, and negligence of any subcontractor, its agents, servants, or workmen as fully as if these were the Contractor's own acts, defaults, or negligence, or those of its agents, servants, or workmen.

## **8. Pre-Bid Conference**

The Procuring Entity will hold a pre-bid conference for this Project on the specified date and time and either at its physical address UP Cebu BAC Office, Ground Flr. College of Science Bldg and/or through videoconferencing/webcasting as indicated in paragraph 6 of the **IB**.

## **9. Clarification and Amendment of Bidding Documents**

Prospective bidders may request for clarification on and/or interpretation of any part of the Bidding Documents. Such requests must be in writing and received by the Procuring Entity, either at its given address or through electronic mail indicated in the **IB**, at least ten (10) calendar days before the deadline set for the submission and receipt of Bids.

## **10. Documents Comprising the Bid: Eligibility and Technical Components**

- 10.1. The first envelope shall contain the eligibility and technical documents of the Bid as specified in **Section IX. Checklist of Technical and Financial Documents**.
- 10.2. If the eligibility requirements or statements, the bids, and all other documents for submission to the BAC are in foreign language other than English, it must be accompanied by a translation in English, which shall be authenticated by the appropriate Philippine foreign service establishment, post, or the equivalent office having jurisdiction over the foreign bidder's affairs in the Philippines. For Contracting Parties to the Apostille Convention, only the translated documents shall be authenticated through an apostille pursuant to GPPB Resolution No. 13-2019 dated 23 May 2019. The English translation shall govern, for purposes of interpretation of the bid.
- 10.3. A valid special PCAB License in case of Joint Ventures, and registration for the type and cost of the contract for this Project. Any additional type of Contractor license or permit shall be indicated in the **BDS**.
- 10.4. A List of Contractor's key personnel (e.g., Project Manager, Project Engineers, Materials Engineers, and Foremen) assigned to the contract to be bid, with their complete qualification and experience data shall be provided. These key personnel must meet the required minimum years of experience set in the **BDS**.
- 10.5. A List of Contractor's major equipment units, which are owned, leased, and/or under purchase agreements, supported by proof of ownership, certification of availability of equipment from the equipment lessor/vendor for the duration of

the project, as the case may be, must meet the minimum requirements for the contract set in the **BDS**.

## **11. Documents Comprising the Bid: Financial Component**

- 11.1. The second bid envelope shall contain the financial documents for the Bid as specified in **Section IX. Checklist of Technical and Financial Documents**.
- 11.2. Any bid exceeding the ABC indicated in paragraph 1 of the **IB** shall not be accepted.
- 11.3. For Foreign-funded procurement, a ceiling may be applied to bid prices provided the conditions are met under Section 31.2 of the 2016 revised IRR of RA No. 9184.

## **12. Alternative Bids**

Bidders shall submit offers that comply with the requirements of the Bidding Documents, including the basic technical design as indicated in the drawings and specifications. Unless there is a value engineering clause in the **BDS**, alternative Bids shall not be accepted.

## **13. Bid Prices**

All bid prices for the given scope of work in the Project as awarded shall be considered as fixed prices, and therefore not subject to price escalation during contract implementation, except under extraordinary circumstances as determined by the NEDA and approved by the GPPB pursuant to the revised Guidelines for Contract Price Escalation guidelines.

## **14. Bid and Payment Currencies**

- 14.1. Bid prices may be quoted in the local currency or tradeable currency accepted by the BSP at the discretion of the Bidder. However, for purposes of bid evaluation, Bids denominated in foreign currencies shall be converted to Philippine currency based on the exchange rate as published in the BSP reference rate bulletin on the day of the bid opening.
- 14.2. *Payment of the contract price shall be made in:*

Philippine Pesos.

## **15. Bid Security**

- 15.1. The Bidder shall submit a Bid Securing Declaration or any form of Bid Security in the amount indicated in the **BDS**, which shall be not less than the percentage of the ABC in accordance with the schedule in the **BDS**.

- 15.2. The Bid and bid security shall be valid until *[indicate date]*. Any bid not accompanied by an acceptable bid security shall be rejected by the Procuring Entity as non-responsive.

## **16. Sealing and Marking of Bids**

Each Bidder shall submit one copy of the first and second components of its Bid.

The Procuring Entity may request additional hard copies and/or electronic copies of the Bid. However, failure of the Bidders to comply with the said request shall not be a ground for disqualification.

If the Procuring Entity allows the submission of bids through online submission to the given website or any other electronic means, the Bidder shall submit an electronic copy of its Bid, which must be digitally signed. An electronic copy that cannot be opened or is corrupted shall be considered non-responsive and, thus, automatically disqualified.

## **17. Deadline for Submission of Bids**

The Bidders shall submit on the specified date and time and either at its physical address or through online submission as indicated in paragraph 7 of the **IB**.

## **18. Opening and Preliminary Examination of Bids**

- 18.1. The BAC shall open the Bids in public at the time, on the date, and at the place specified in paragraph 9 of the **IB**. The Bidders' representatives who are present shall sign a register evidencing their attendance. In case videoconferencing, webcasting or other similar technologies will be used, attendance of participants shall likewise be recorded by the BAC Secretariat.

In case the Bids cannot be opened as scheduled due to justifiable reasons, the rescheduling requirements under Section 29 of the 2016 revised IRR of RA No. 9184 shall prevail.

- 18.2. The preliminary examination of Bids shall be governed by Section 30 of the 2016 revised IRR of RA No. 9184.

## **19. Detailed Evaluation and Comparison of Bids**

- 19.1. The Procuring Entity's BAC shall immediately conduct a detailed evaluation of all Bids rated "*passed*" using non-discretionary pass/fail criteria. The BAC shall consider the conditions in the evaluation of Bids under Section 32.2 of 2016 revised IRR of RA No. 9184.

- 19.2. If the Project allows partial bids, all Bids and combinations of Bids as indicated in the **BDS** shall be received by the same deadline and opened and evaluated simultaneously so as to determine the Bid or combination of Bids offering the lowest calculated cost to the Procuring Entity. Bid Security as required by **ITB** Clause 15 shall be submitted for each contract (lot) separately.

19.3. In all cases, the NFCC computation pursuant to Section 23.4.2.6 of the 2016 revised IRR of RA No. 9184 must be sufficient for the total of the ABCs for all the lots participated in by the prospective Bidder.

## **20. Post Qualification**

Within a non-extendible period of five (5) calendar days from receipt by the Bidder of the notice from the BAC that it submitted the Lowest Calculated Bid, the Bidder shall submit its latest income and business tax returns filed and paid through the BIR Electronic Filing and Payment System (eFPS), and other appropriate licenses and permits required by law and stated in the **BDS**.

## **21. Signing of the Contract**

The documents required in Section 37.2 of the 2016 revised IRR of RA No. 9184 shall form part of the Contract. Additional Contract documents are indicated in the **BDS**.

## *Section III. Bid Data Sheet*

### **Bid Data Sheet**

<b>ITB Clause</b>																
5.2	For this purpose, contracts similar to the Project refer to contracts which have the same major categories of work, which shall be: <i>General Engineering and Construction</i>															
7.1	<i>Portions of the work that may be subcontracted would include: Painting, electrical, plumbing, electronic, mechanical works Subcontracted works must not exceed 50% of the total contract amount.</i>															
10.3	<i>No further instructions.</i>															
10.4	The key personnel must meet the required minimum years of experience set below: <table border="1" style="width: 100%; border-collapse: collapse;"> <thead> <tr> <th style="text-align: left;"><u>Key Personnel</u></th> <th style="text-align: left;"><u>General Experience</u></th> <th style="text-align: left;"><u>Relevant Experience</u></th> </tr> </thead> <tbody> <tr> <td>Project Engineer</td> <td>general construction (2yrs)</td> <td>same</td> </tr> <tr> <td>Site Engineer</td> <td>general construction(2yrs)</td> <td>same</td> </tr> <tr> <td>Foreman</td> <td>general construction (2yrs)</td> <td>same</td> </tr> <tr> <td>Safety Officer</td> <td>construction safety (2yrs)</td> <td>same</td> </tr> </tbody> </table>	<u>Key Personnel</u>	<u>General Experience</u>	<u>Relevant Experience</u>	Project Engineer	general construction (2yrs)	same	Site Engineer	general construction(2yrs)	same	Foreman	general construction (2yrs)	same	Safety Officer	construction safety (2yrs)	same
<u>Key Personnel</u>	<u>General Experience</u>	<u>Relevant Experience</u>														
Project Engineer	general construction (2yrs)	same														
Site Engineer	general construction(2yrs)	same														
Foreman	general construction (2yrs)	same														
Safety Officer	construction safety (2yrs)	same														
10.5	The minimum major equipment requirements are the following: ( refer to scope of works for details) <table border="1" style="width: 100%; border-collapse: collapse;"> <thead> <tr> <th style="text-align: left;"><u>Equipment</u></th> <th style="text-align: left;"><u>Capacity</u></th> <th style="text-align: left;"><u>Number of Units</u></th> </tr> </thead> <tbody> <tr> <td> </td> <td> </td> <td> </td> </tr> </tbody> </table>	<u>Equipment</u>	<u>Capacity</u>	<u>Number of Units</u>												
<u>Equipment</u>	<u>Capacity</u>	<u>Number of Units</u>														
12	<i>No further instructions.</i>															
15.1	The bid security shall be in the form of a Bid Securing Declaration or any of the following forms and amounts: <p style="margin-left: 40px;">a. The amount of not less than <b>One Hundred Fifty Five Thousand Eight Hundred Fifty Seven Pesos and Thirty Two Centavos (₱155,857.32)</b>, if bid security is in cash, cashier's/manager's check, bank draft/guarantee or irrevocable letter of credit;</p> <p style="margin-left: 40px;">b. The amount of not less than <b>Three Hundred Eighty Nine Thousand Six Hundred Forty Three Pesos and Thirty One Centavos (₱389,643.31)</b> if bid security is in Surety Bond.</p>															
19.2	Partial bids are not allowed.															
20	<i>No further instructions</i>															
21	Additional contract documents relevant to the Project that may be required by existing laws and/or the Procuring Entity, such as construction schedule and S-curve, manpower schedule, construction methods, equipment utilization schedule, construction safety and health program approved by the DOLE ( to be submitted after award), and other acceptable tools of project scheduling. Certificate of Site inspection to be included in the bidding documents.															

## ***Section IV. General Conditions of Contract***

### **1. Scope of Contract**

This Contract shall include all such items, although not specifically mentioned, that can be reasonably inferred as being required for its completion as if such items were expressly mentioned herein. All the provisions of RA No. 9184 and its 2016 revised IRR, including the Generic Procurement Manual, and associated issuances, constitute the primary source for the terms and conditions of the Contract, and thus, applicable in contract implementation. Herein clauses shall serve as the secondary source for the terms and conditions of the Contract.

This is without prejudice to Sections 74.1 and 74.2 of the 2016 revised IRR of RA No. 9184 allowing the GPPB to amend the IRR, which shall be applied to all procurement activities, the advertisement, posting, or invitation of which were issued after the effectivity of the said amendment.

### **2. Sectional Completion of Works**

If sectional completion is specified in the **Special Conditions of Contract (SCC)**, references in the Conditions of Contract to the Works, the Completion Date, and the Intended Completion Date shall apply to any Section of the Works (other than references to the Completion Date and Intended Completion Date for the whole of the Works).

### **3. Possession of Site**

3.1 The Procuring Entity shall give possession of all or parts of the Site to the Contractor based on the schedule of delivery indicated in the **SCC**, which corresponds to the execution of the Works. If the Contractor suffers delay or incurs cost from failure on the part of the Procuring Entity to give possession in accordance with the terms of this clause, the Procuring Entity's Representative shall give the Contractor a Contract Time Extension and certify such sum as fair to cover the cost incurred, which sum shall be paid by Procuring Entity.

3.2 If possession of a portion is not given by the above date, the Procuring Entity will be deemed to have delayed the start of the relevant activities. The resulting adjustments in contract time to address such delay may be addressed through contract extension provided under Annex "E" of the 2016 revised IRR of RA No. 9184.

### **4. The Contractor's Obligations**

The Contractor shall employ the key personnel named in the Schedule of Key Personnel indicating their designation, in accordance with **ITB** Clause 10.3 and specified in the **BDS**, to carry out the supervision of the Works.



The Procuring Entity will approve any proposed replacement of key personnel only if their relevant qualifications and abilities are equal to or better than those of the personnel listed in the Schedule.

## **5. Performance Security**

- 5.1. Within ten (10) calendar days from receipt of the Notice of Award from the Procuring Entity but in no case later than the signing of the contract by both parties, the successful Bidder shall furnish the performance security in any of the forms prescribed in Section 39 of the 2016 revised IRR.
- 5.2. The Contractor, by entering into the Contract with the Procuring Entity, acknowledges the right of the Procuring Entity to institute action pursuant to RA No. 3688 against any subcontractor be they an individual, firm, partnership, corporation, or association supplying the Contractor with labor, materials and/or equipment for the performance of this Contract.

## **6. Site Investigation Reports**

The Contractor, in preparing the Bid, shall rely on any Site Investigation Reports referred to in the SCC supplemented by any information obtained by the Contractor.

## **7. Warranty**

- 7.1. In case the Contractor fails to undertake the repair works under Section 62.2.2 of the 2016 revised IRR, the Procuring Entity shall forfeit its performance security, subject its property(ies) to attachment or garnishment proceedings, and perpetually disqualify it from participating in any public bidding. All payables of the GOP in his favor shall be offset to recover the costs.
- 7.2. The warranty against Structural Defects/Failures, except that occasioned-on force majeure, shall cover the period from the date of issuance of the Certificate of Final Acceptance by the Procuring Entity. Specific duration of the warranty is found in the SCC.

## **8. Liability of the Contractor**

Subject to additional provisions, if any, set forth in the SCC, the Contractor's liability under this Contract shall be as provided by the laws of the Republic of the Philippines.

If the Contractor is a joint venture, all partners to the joint venture shall be jointly and severally liable to the Procuring Entity.

## **9. Termination for Other Causes**

Contract termination shall be initiated in case it is determined *prima facie* by the Procuring Entity that the Contractor has engaged, before, or during the implementation of the contract, in unlawful deeds and behaviors relative to contract acquisition and implementation, such as, but not limited to corrupt, fraudulent, collusive, coercive, and obstructive practices as stated in ITB Clause 4.

## **10. Dayworks**

Subject to the guidelines on Variation Order in Annex “E” of the 2016 revised IRR of RA No. 9184, and if applicable as indicated in the SCC, the Dayworks rates in the Contractor’s Bid shall be used for small additional amounts of work only when the Procuring Entity’s Representative has given written instructions in advance for additional work to be paid for in that way.

## **11. Program of Work**

11.1. The Contractor shall submit to the Procuring Entity’s Representative for approval the said Program of Work showing the general methods, arrangements, order, and timing for all the activities in the Works. The submissions of the Program of Work are indicated in the SCC.

11.2. The Contractor shall submit to the Procuring Entity’s Representative for approval an updated Program of Work at intervals no longer than the period stated in the SCC. If the Contractor does not submit an updated Program of Work within this period, the Procuring Entity’s Representative may withhold the amount stated in the SCC from the next payment certificate and continue to withhold this amount until the next payment after the date on which the overdue Program of Work has been submitted.

## **12. Instructions, Inspections and Audits**

The Contractor shall permit the GOP or the Procuring Entity to inspect the Contractor’s accounts and records relating to the performance of the Contractor and to have them audited by auditors of the GOP or the Procuring Entity, as may be required.

## **13. Advance Payment**

The Procuring Entity shall, upon a written request of the Contractor which shall be submitted as a Contract document, make an advance payment to the Contractor in an amount not exceeding fifteen percent (15%) of the total contract price, to be made in lump sum, or at the most two installments according to a schedule specified in the SCC, subject to the requirements in Annex “E” of the 2016 revised IRR of RA No. 9184.

## **14. Progress Payments**

The Contractor may submit a request for payment for Work accomplished. Such requests for payment shall be verified and certified by the Procuring Entity’s Representative/Project Engineer. Except as otherwise stipulated in the SCC, materials and equipment delivered on the site but not completely put in place shall not be included for payment.

## **15. Operating and Maintenance Manuals**

- 15.1. If required, the Contractor will provide “as built” Drawings and/or operating and maintenance manuals as specified in the SCC.
- 15.2. If the Contractor does not provide the Drawings and/or manuals by the dates stated above, or they do not receive the Procuring Entity’s Representative’s approval, the Procuring Entity’s Representative may withhold the amount stated in the SCC from payments due to the Contractor.

## *Section V. Special Conditions of Contract*

### **Special Conditions of Contract**

<b>GCC Clause</b>	
2	<i>No further instructions</i>
4.1	<i>150 calendar days after receipt of NTP</i>
6	The site investigation reports are: <i>none</i>
7.2	Five (5) years warranty
10	No dayworks are applicable to the contract.
11.1	The Contractor shall submit the Program of Work to the Procuring Entity's Representative within <i>five (5) days</i> of delivery of the Notice of Award.
11.2	The amount to be withheld for late submission of an updated Program of Work is 1%.
13	The amount of the advance payment is <b><i>15% of the total contract price and payments shall be made through accomplishment progress billing by the contractor as confirmed by the OCA</i></b> <i>The advance payment shall be made only upon the submission to and acceptance by the procuring entity of an irrevocable standby letter of credit of equivalent value from a commercial bank, a bank guarantee or a surety bond callable upon demand, issued by a surety or insurance company duly licensed by the Insurance Commission and confirmed by the procuring entity. (Sec 4.2 Annex E of the 2016 IRR RA9184)</i>
14	Materials and equipment delivered on the site but not completely put in place shall be included for payment.
15.1	The date by which "as built" drawings are required is prior to issuance of Certificate of Completion.
15.2	The amount to be withheld for failing to produce "as built" drawings and/or operating and maintenance manuals by the date required is <i>1% of contract amount</i> .

# Section VI. Specifications

PROJECT TITLE : PROPOSED 2-STORY DATA CENTER (PHASE 2)  
 LOCATION : UP CEBU, LAHUG, CEBU CITY  
 SUBJECT : COST ESTIMATE AND SCOPE OF WORKS  
 DURATION : 150 CALENDAR DAYS  
 ABC : ₱7,792,866.23

## SCOPE OF WORK :

### General:

The work to be executed consists of all materials, equipment and labor, except as herein specified, and, in performing all work to be completed in accordance with the specifications schedules and plans, which are made as integral parts hereof, including such detailed drawings as may be furnished from time to time during the execution of Work.

1. Staking out of building, establishment of lines, grades and benchmarks.
2. Protection of Property, work and structures, workmen and other people from damage and injury.
3. Stake out accurately the lines of the building and of the other structures included in the contract and established grades therefore, after which secure approval from the Architect before any excavation work is commenced.
4. Erect basic batter boards and basic reference marks at such places where they will not be disturbed during the construction of the foundations.
5. Structural Excavations - must be in accordance to established grade but if the required safe soil bearing capacity is not obtained at the elevation indicated in the plans, the excavation shall be continued until such safe bearing capacity is obtained. Footings and pedestals must be adjusted accordingly.
6. Filling and Backfilling - After forms have been removed from footings/foundations and when concrete is hard to resist pressure resulting from fill, backfilling may then be done. Materials excavated may be used for backfilling. All filling shall be placed in layers not exceeding six (6) inches in thickness, each layer being thoroughly compacted and rammed by wetting, tamping and rolling, including soil poisoning.
7. Placing and Compacting Fill  
 Common Fill - shall be approved site-excavated material free from roots, stumps and other perishable or objectionable matter  
 Select Fill - shall be placed where indicated and shall consist of crushed gravel, crushed rock, or a combination thereof. The material shall be free from silt, vegetable matter and shall be thoroughly tamped after placing.  
 Before placing fill material, the surface upon which it will be placed shall be cleared of all brush, roots, vegetable matter and debris, scarified and thoroughly wetted to insure good bonding between the grounds.
8. Disposal of Surplus Materials - Removed construction trash and unusable materials will be hauled and discarded outside UP Cebu Lahug Campus (as per contractor choice of dumpsite)
9. Concrete and Reinforcement - Unless otherwise specified herein, concrete work shall conform to the requirements of the NSCP. Full cooperation shall be given other trades to install embedded items. Provisions shall be made for setting items not placed in forms. Before concrete is placed, embedded items shall have been inspected and tested.
10. Forms and Scaffolding - Forms shall conform to the shape, line and dimensions of the concrete structures as reflected on the plans. Forms shall be substantial and sufficiently tight to prevent leakage of water.  
 Forms and shorings shall not be disturbed and shall remain in place for a minimum period of time required for curing of reinforced concrete as required by the National Building Code.
11. Metal Works - supply and install metal works for Stairs, Landings, Railings, PWD Toilet and AGCU Support.
12. Specialty Works  
 12.1. Supply, layout and installation of used 40 foot High Cube Container Van on site.  
 The contractor shall repair noticeable defects of the used contained van and provide waterproofing if necessary.  
 12.2. Supply and install UP Cebu & Data Commons Acrylic Signage - W1715mm X H700mm X D50mm  
 12.3. Supply and install Furnitures  
 12.4. Vegetation surrounding MRF - supply & plant Thai Bamboo
13. Carpentry and Joinery Work - supply and install drywall with rockwool insulation and ceiling for the Project  
 Secure work to grounds; otherwise fasten in position to hold correct surfaces, lines and levels.  
 Make finished work flat, plumb and true.
14. Thermal and Moisture Protection  
 Walls - supply and install Rock Wool insulation for drywall partitions.  
 Roof - supply and install main roof for the Project. Lapping, strapping, riveting, soldering and counter flashing shall be done in the most approved method and practices of the trade.
15. Doors - supply and install Doors & Windows for the Project.
16. Finishes  
 Exterior Walls - supply and paint exterior walls.  
 Interior Walls - supply and paint interior Walls of Data Center Area, MDF Room and Storage Room partition.  
 Ceiling - supply and paint interior Walls.  
 Floor - supply and install Ruberized Linoleum for interior areas & Epoxy Coating for Corridor.
17. Plumbing - supply and install Sanitary & Storm Drainage System, Water Supply Lines and Plumbing Fixtures, Accessories & Appurtenances. All Work shall be done under direct supervision of a licensed Master Plumber and in strict accordance with the methods as prescribed National Plumbing Code of the Philippines.
18. Electrical  
 Enclosed Circuit Breaker supply & installation.  
 ATS Panel and Wiring supply & installation.  
 MDP Panel and Wiring supply & installation.  
 Roughing-in layout supply & installation for embedding and exposed piping.

- Lighting Fixtures supply & installation
- Device Fixtures supply & installation
- Wiring and Cable pulling for Lighting Fixtures and Devices
- Panel boards supply & installation
- Chipping works if necessary and compliance to complete the scope of work.
- Provide safety precaution during installation.
- 18 **Mechanics**
- Aircon supply & installation
- Rough-in layout supply & installation for embedded and exposed piping.
- Provide safety precaution during installation.
- 20 **Electronics**
- Device Fixtures supply & installation.
- Rough-in layout supply & installation for embedded and exposed piping.
- Cable pulling for Devices.
- Chipping works if necessary and compliance to complete the scope of work.
- Provide safety precaution during installation.
- 21 Provide Project sign Board as per requirement by CDA.
- 22 All exposed work shall be protected while the building is being renovated.
- The ceiling, the walls and all other surfaces not to be demolished shall be well protected during construction by sufficient covers.
- Any stains, dirt, smears and other imperfections shall be removed by the Contractor to the satisfaction of the Architect.
- 23 Structure affected during work, but not included in their scope of work should be repaired back to the original features. (Paint, etc.)
- 24 Removed construction trash and unusable materials will be hauled and disposed outside UP Gate, Lafuj Campus (as per contractor advice or supervision)
- 25 Housekeeping must be done daily.
- 26 Clearing, Housekeeping and handover.
- 27 Any imperfections in the Scope of Work done by the Contractor shall be rectified

**SPECIFICATIONS :**

- 1 Refer to plans for the new location of the MSF.
- 2 **Concrete and Reinforcements** - Refer to plans and specifications of Structure Designer.
  - 2.1 Cement for general concrete work shall be type 1 Portland cement conforming to ASTM C150 "Specifications for Portland Cement". Cement shall be stored in moisture proof silos or sheds.
  - 2.2 Coarse Aggregates shall be either natural gravel or crushed rock conforming to the "Specifications for Concrete Aggregates" - Latest issue, ASTM C33. The maximum size of aggregates shall not be larger than one-fourth (1/4) of the narrowest dimension between sides of the forms within which the concrete is to be cast nor larger than three-fourth (3/4) of the minimum steel spacing between reinforcing bars or between reinforcing bars and forms.
  - 2.3 Fine aggregates shall be beach or river sand conforming to ASTM C33.
  - 2.3.1 Concrete Aggregates - Sand particles shall be clean, sharp, clean - free from lumps, dust, water, oil and all foreign matter.
  - 2.4 Class A mixture shall be used for all concrete columns, footings, reinforced concrete beams and shall develop full strength in 28 days or as specified in structural computations, whichever is higher.
- 3 **Forms and Scaffolding**
  - 3.1 Forms shall conform to the shape, size and dimensions of the concrete structures as reflected on the plans.
  - 3.2 Forms shall be substantial and sufficiently tight to prevent leakage of water.
  - 3.3 Forms and shoring shall not be disturbed and shall remain in place for a minimum period of time required for curing of reinforced concrete as required by the National Building Code.
  - 3.4 Forms shall be 3/4" or 1 1/2" thick plywood panels with an approved form of tyms. Used material shall not be stored.
- 4 **Metal Works**
  - Steel Bar - access to 2nd Floor (refer to BOD)
  - Handrail for Stair - 30mmx30mm S/S Tubular material
  - Handrail for 2nd Floor Stair Landing - 30mmx30mm S/S Tubular material
  - Cumby Post for Stair - Ø1 Pipe, 1" Square, Seamless
  - Handrail for P.V.C Ramp - 30mmx30mm S/S Tubular material
  - Metal Works for P.V.C Toilet (refer to BOD)
  - ACCU Support - 4mm Dia, 2" x 2" x 60° Angle bars
- 5 **Specialty Works**
  - The contractor shall repair noticeable defects of the used contained van and provide waterproofing if necessary.
  - 5.1 Supply, layout and installation of cast 40 foot High Cube Container Van in site.
  - The contractor shall repair noticeable defects of the used contained van and provide waterproofing if necessary.
  - 5.2 Supply and install UP Cable & Data Conduits Approx. Signage - W1710mm X H700mm X Ø60mm
  - 5.3 Supply and install Furniture
    - Steel Metal Chair w/ Armrest, Fabric seat & back, PVC laminate & stainless
    - Freestanding Table for office - 1120mm x W620mm x H750mm, HFG table, Bullnose edge w/ Round Corner
    - Table (for lounge) - 1800mm x W900mm x H750mm
    - Freestanding Table (for lounge) - 1280mm x W600mm x H750mm, HFC table, Bullnose edge (metal leg)
    - Stackable Chair (for lounge) - Plastic seat & back (black), Chrome frame
    - Base Cabinet (supply & install) - for Pantry, 1800mm x W600mm x H850mm
    - Hanging Cabinet (supply & install) - for Pantry, 1800mm x W600mm x H720mm
    - Workstation surrounding MSF - supply & plant. This includes
  - 5.4 Waterproof surrounding MSF - supply & plant. This includes
- 6 **Carpentry and Joinery Work** - supply and install drywall with rockwool insulation and ceiling to the Project (secure work to ground; otherwise fasten in joists) to hold control outlets, sockets and lights. Make finished work flat, plumb and true.
  - Walls - 12mm Gypsum Board on 0.5mm Thick, Carrying Channel 10mm x 25mm w/ rockwool insulation.
  - Ceiling - 12mm Gypsum Board on 0.5mm Thick, 12mm x 50mm Double Furring
  - Thermal and Moisture Protection
  - Wall - supply and install 12mm Wood Insulation for drywall partitions.
  - Roof - supply and install main roof for the Project. Lathing, sheathing, roofing, eaveless and eaveless fitting, shall be done in the most approved method and practices of the trade.
- 7 **Doors & Windows**
  - UPVC w/ Glass Door, complete w/ hardware & Accessories
  - PVC Door w/ Door Jamb, complete w/ Hardware & Accessories
  - Sliding Glass Windows complete w/ Hardware & Accessories
  - Fixed Glass Windows complete w/ hardware & Accessories
- 8 **Finishes**
  - Exterior Walls - Acrylic Semi-Gloss Latex Paint (2 coats)
  - Interior Walls - Interior Primer (1 coat) & Acrylic Semi-Gloss Latex Paint (1 coat)
  - Ceiling - Interior Primer (1 coat) & Acrylic Semi-Gloss Latex Paint (1 coat)
  - Floor - Rubberized Urethane Stone finished on floor with Premium Contact Cement
  - Provide proper surface preparation prior to installation of finishes and painting.

- 10 Plumbing - supply and install Storm Drainage System w/ rainwater tank. All Work shall be done under direct supervision of a licensed Master Plumber and in strict accordance with the methods as prescribed by the National Plumbing Code of the Philippines. The Contractor shall provide catch basins as shown on detail drawings of the proper sizes as to facilitate effective drainage and cleaning. All connections of storm drain lines outside building Drainage pipes shall be laid true to lines and grades as shown on drawings. Any pipe that has the grade or joint disturbed after laying shall be taken out and relaid.
- 11 Electrical
  - 11.1. The Contractor shall furnish all materials, labor, plant, tools, equipment and other services and perform all operations necessary for the complete installation of the Electrical System for the Project in accordance with the drawings and specifications. All electrical work shall be done under the direct supervision of a licensed Electrical Engineer
  - 11.2. All materials to be used shall be new and of the approved type for the location and purpose.
  - 11.3. Chipping works if necessary and compliance to complete the scope of works.
  - 11.4. Provide safety precaution during installation.
- 12 Mechanical
  - 12.1. The Contractor shall furnish all materials, labor, plant, tools, equipment and other services and perform all operations necessary for the complete installation of the Mechanical System for the Project in accordance with the drawings and specifications. All electrical work shall be done under the direct supervision of a licensed Electrical Engineer
  - 12.2. The Contractor shall guarantee that the mechanical system is free from all defective workmanship and materials.
  - 12.3. The Contractor at his own expenses shall remedy any defect mechanical system
- 13 Electronics
  - 13.1. Under this Division and together with the specifications, provide all materials and equipment and perform all the work necessary for the complete execution of the system shown on the drawings with reference to the general construction drawings as herein specified.
  - 13.2. Chipping works if necessary and compliance to complete the scope of works.
  - 13.3. Provide safety precaution during installation.

**CLIENTS DIRECTION :**

- 1 Construction must be in accordance with the safe methodology and safety standards.
- 2 Removal of Existing Architectural Components, Mechanical & Electrical fixtures, must be in accordance with the safe methodology and safety standards.
- 3 Working at heights above 1.70m shall provide safety harness with double lanyard and properly hooked to lifeline.
- 4 Remove construction trash and unusable materials will be hauled and discarded outside UP Cebu Lahug Campus (as per contractor choice of dumpsite)
- 5 Structure affected during work but not included in their scope of work should be repaired back to the original features. (Paint, etc.)
- 6 Housekeeping must be done daily.
- 7 Prepare material approval request prior to material procurements.
- 8 Request for inspection must be requested on all activities.
- 9 Submit Method statement on all important activities.
- 10 Provide safe access for inspection.
- 11 Comply and follow all the rules and regulation of the UP Cebu Lahug Campus.
- 12 Strictly implement maximum construction safety standards at all times

**Note:**

- \* Power and water consumption must be paid by the contractor.
- \* Handtools and minor equipment will be provided by the contractor.
- \* Provide Scaffolding or any for safe access to roof and working at heights

**PREPARED BY:**

**Ar. John Ellis C. Acosta**  
Sp. Of Architectural Associate

**ENDORSED:**

**Engr. Rud T. Lomrod**  
Supervising Engineering Associate

**ENDORSED:**

**Hazel A. Trapera**  
Vice Chancellor for Administration

**ENDORSED:**

**Engr. Nicodimus R. Delda**  
Senior Engineering Associate



**ENDORSED:**

**Jonathan P. Victoria**  
Information Technology Center (ITC)

**APPROVED BY:**

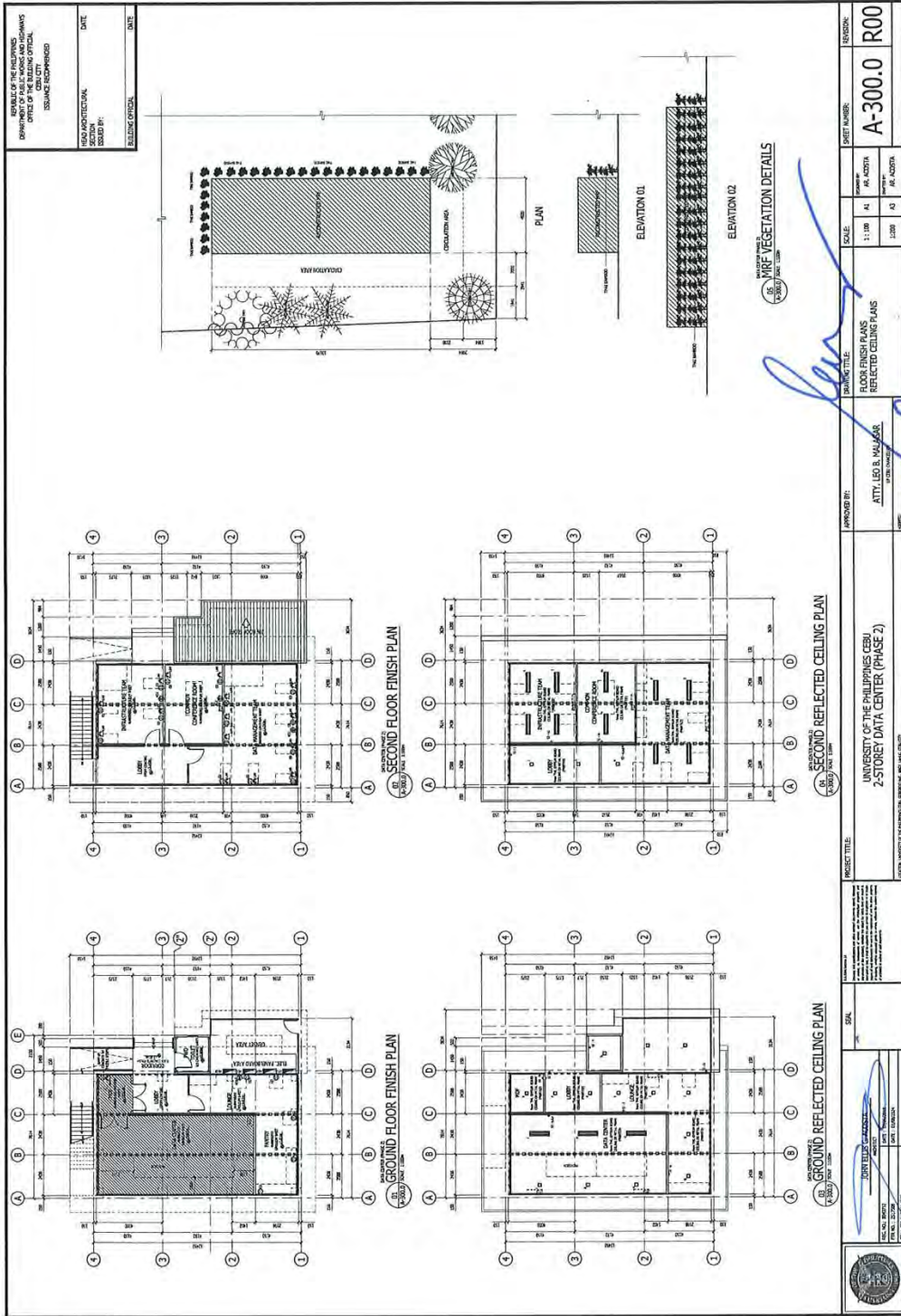
**Atty. Leo B. Matigara**  
Chancellor, UP Cebu

# Section VII. Drawings

<p>UNIVERSITY OF THE SOUTHERN STATES 2-STORY DATA CENTER (PHASE 2)</p>	<p>PROJECT TITLE UNIVERSITY OF THE SOUTHERN STATES 2-STORY DATA CENTER (PHASE 2)</p>	<p>DATE 1/18/14</p>	<p>SCALE AS SHOWN</p>	<p>PROJECT NUMBER A-100.0 R00</p>
 <p>ARCHITECTURAL SITE PLAN</p>	<p>UNIVERSITY OF THE SOUTHERN STATES 2-STORY DATA CENTER (PHASE 2)</p>	<p>DATE 1/18/14</p>	<p>SCALE AS SHOWN</p>	<p>PROJECT NUMBER A-100.0 R00</p>
	<p>UNIVERSITY OF THE SOUTHERN STATES 2-STORY DATA CENTER (PHASE 2)</p>	<p>DATE 1/18/14</p>	<p>SCALE AS SHOWN</p>	<p>PROJECT NUMBER A-100.0 R00</p>
<p>UNIVERSITY OF THE SOUTHERN STATES 2-STORY DATA CENTER (PHASE 2)</p>	<p>UNIVERSITY OF THE SOUTHERN STATES 2-STORY DATA CENTER (PHASE 2)</p>	<p>DATE 1/18/14</p>	<p>SCALE AS SHOWN</p>	<p>PROJECT NUMBER A-100.0 R00</p>
<p>UNIVERSITY OF THE SOUTHERN STATES 2-STORY DATA CENTER (PHASE 2)</p>	<p>UNIVERSITY OF THE SOUTHERN STATES 2-STORY DATA CENTER (PHASE 2)</p>	<p>DATE 1/18/14</p>	<p>SCALE AS SHOWN</p>	<p>PROJECT NUMBER A-100.0 R00</p>
<p>UNIVERSITY OF THE SOUTHERN STATES 2-STORY DATA CENTER (PHASE 2)</p>	<p>UNIVERSITY OF THE SOUTHERN STATES 2-STORY DATA CENTER (PHASE 2)</p>	<p>DATE 1/18/14</p>	<p>SCALE AS SHOWN</p>	<p>PROJECT NUMBER A-100.0 R00</p>
<p>UNIVERSITY OF THE SOUTHERN STATES 2-STORY DATA CENTER (PHASE 2)</p>	<p>UNIVERSITY OF THE SOUTHERN STATES 2-STORY DATA CENTER (PHASE 2)</p>	<p>DATE 1/18/14</p>	<p>SCALE AS SHOWN</p>	<p>PROJECT NUMBER A-100.0 R00</p>







UNIVERSITY OF THE PHILIPPINES  
 DIVISION OFFICE OF BUILDINGS AND CONSTRUCTION  
 OFFICE OF THE BUILDING OFFICIAL  
 (ISSUANCE ENCOURAGED)

DATE: \_\_\_\_\_

ISSUED BY: \_\_\_\_\_

DATE: \_\_\_\_\_

PROJECT TITLE: <b>UNIVERSITY OF THE PHILIPPINES CEBU          2-STORY DATA CENTER (PHASE 2)</b>	APPROVED BY: <b>ATY. LEO B. MALABAR</b> <small>REGISTERED ARCHITECT</small>	DRAWING TITLE: <b>FLOOR FINISH PLANS          REFLECTED CEILING PLANS</b>	SCALE: 1:100	SHEET NUMBER: <b>A-300.0</b>	REVISION: <b>R00</b>
			DATE: _____	DRAWN BY: A1, A2, A3	CHECKED BY: A1, A2, A3

*[Handwritten signature]*

*[Handwritten signature]*





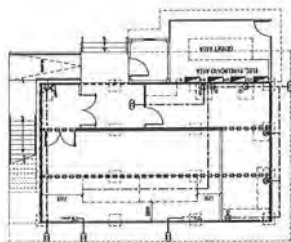




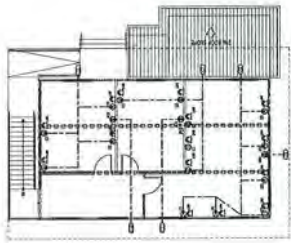


BOARD OF PROFESSIONAL ENGINEERS  
 DIVISION OF ELECTRICAL ENGINEERING  
 OFFICE OF THE BUILDING OFFICIAL  
 1201 M. DEL PUERTO BLVD., 3RD FLOOR  
 MANILA, PHILIPPINES

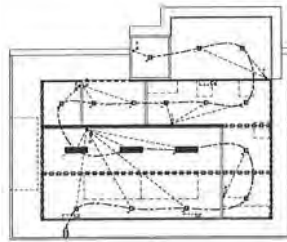
MAIN ELECTRICAL  
 DRAWING NO. E-101.0  
 DESIGNED BY: [Signature]  
 CHECKED BY: [Signature]  
 BUILDING OFFICIAL: [Signature] DATE:



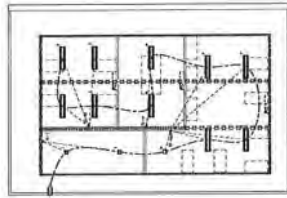
POWER LAYOUT  
 GROUND FLOOR POWER LAYOUT



POWER LAYOUT  
 SECOND FLOOR POWER LAYOUT



LIGHTING LAYOUT  
 GROUND FLOOR LIGHTING LAYOUT

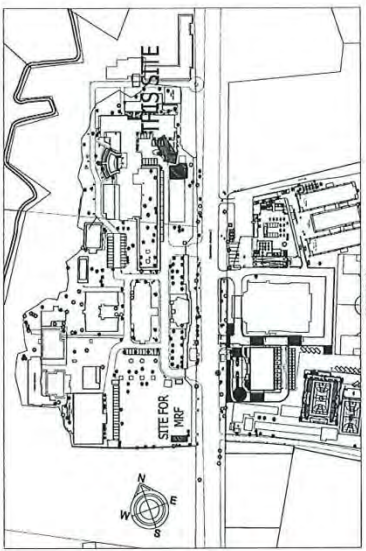


LIGHTING LAYOUT  
 SECOND FLOOR LIGHTING LAYOUT

	PROJECT NUMBER UNIVERSITY OF THE PHILIPPINES CEBU 2-STORY DATA CENTER (PHASE 2)	PROJECT TITLE UNIVERSITY OF THE PHILIPPINES CEBU 2-STORY DATA CENTER (PHASE 2)	DRAWING TITLE POWER LAYOUT LIGHTING LAYOUT	SCALE 1:100 1:100	SHEET NUMBER E-101.0	TOTAL SHEETS R00
	DATE 2023	DESIGNED BY [Signature]	CHECKED BY [Signature]	APPROVED BY [Signature] ATTY. LEO B. MAAGAL ELECTRICAL ENGINEER	DATE 2023	BUILDING OFFICIAL [Signature]

STATE OF CALIFORNIA  
 DEPARTMENT OF PUBLIC WORKS AND HIGHWAYS  
 OFFICE OF THE BUILDING OFFICIAL  
 ISSUANCE AUTHORIZED

ISSUED BY: \_\_\_\_\_ DATE: \_\_\_\_\_  
 BUILDING OFFICIAL: \_\_\_\_\_ DATE: \_\_\_\_\_



LOCATION MAP  
 P-100.0

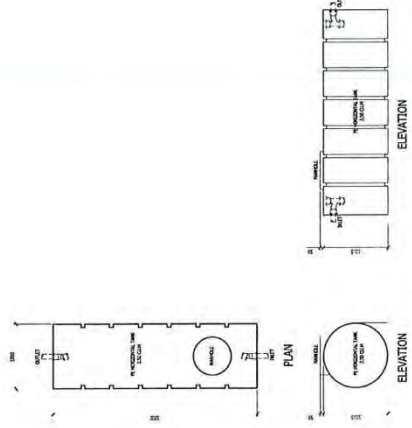
VICINITY MAP  
 P-100.0

- GENERAL NOTES & SPECIFICATIONS:**
1. THE WORK TO BE DONE CONSISTS OF THE FABRICATION, COMPLETE IN ALL RESPECTS, OF THE PROPOSED SEPTIC TANK AND RAINWATER TANKS. THE WORK SHALL BE IN ACCORDANCE WITH THE SPECIFICATIONS AND MATERIALS LISTED HEREIN. ALL WORK SHALL BE IN ACCORDANCE WITH LOCAL ORDINANCES AND ALL APPLICABLE CODES AND REGULATIONS. THE CONTRACTOR SHALL BE RESPONSIBLE FOR OBTAINING ALL NECESSARY PERMITS AND APPROVALS FROM THE LOCAL JURISDICTIONS. THE CONTRACTOR SHALL BE RESPONSIBLE FOR THE PROTECTION OF ALL UTILITIES AND STRUCTURES IN THE PROJECT AREA. THE CONTRACTOR SHALL BE RESPONSIBLE FOR THE PROTECTION OF ALL EXISTING TREES AND LANDSCAPE FEATURES. THE CONTRACTOR SHALL BE RESPONSIBLE FOR THE PROTECTION OF ALL EXISTING UTILITIES AND STRUCTURES. THE CONTRACTOR SHALL BE RESPONSIBLE FOR THE PROTECTION OF ALL EXISTING TREES AND LANDSCAPE FEATURES. THE CONTRACTOR SHALL BE RESPONSIBLE FOR THE PROTECTION OF ALL EXISTING UTILITIES AND STRUCTURES.
  2. THE CONTRACTOR SHALL BE RESPONSIBLE FOR THE PROTECTION OF ALL EXISTING UTILITIES AND STRUCTURES. THE CONTRACTOR SHALL BE RESPONSIBLE FOR THE PROTECTION OF ALL EXISTING TREES AND LANDSCAPE FEATURES. THE CONTRACTOR SHALL BE RESPONSIBLE FOR THE PROTECTION OF ALL EXISTING UTILITIES AND STRUCTURES.
  3. ALL DIMENSIONAL OF FITTINGS, EQUIPMENT, FLOOR AND ROOF DRAINS, RISER AND FITTINGS SHALL BE IN ACCORDANCE WITH THE DIMENSIONAL OF FITTINGS, EQUIPMENT, FLOOR AND ROOF DRAINS, RISER AND FITTINGS. THE CONTRACTOR SHALL BE RESPONSIBLE FOR THE PROTECTION OF ALL EXISTING UTILITIES AND STRUCTURES. THE CONTRACTOR SHALL BE RESPONSIBLE FOR THE PROTECTION OF ALL EXISTING TREES AND LANDSCAPE FEATURES. THE CONTRACTOR SHALL BE RESPONSIBLE FOR THE PROTECTION OF ALL EXISTING UTILITIES AND STRUCTURES.
  4. ALL PLUMBING WORK SHALL BE DONE IN ACCORDANCE WITH THE CERTIFICATION. THE CONTRACTOR SHALL BE RESPONSIBLE FOR THE PROTECTION OF ALL EXISTING UTILITIES AND STRUCTURES. THE CONTRACTOR SHALL BE RESPONSIBLE FOR THE PROTECTION OF ALL EXISTING TREES AND LANDSCAPE FEATURES. THE CONTRACTOR SHALL BE RESPONSIBLE FOR THE PROTECTION OF ALL EXISTING UTILITIES AND STRUCTURES.
  5. MATERIALS SPECIFICATIONS:
    - A. WASTE SYSTEM - PVC PIPES AND FITTINGS - SERIES 1000
    - B. WATER SUPPLY SYSTEM - PVC PIPES AND FITTINGS - SERIES 1000
    - C. STORM DRAINAGE SYSTEM - PVC PIPES AND FITTINGS - SERIES 1000
    - D. VALVES - BRASS WITZ OR EQUAL

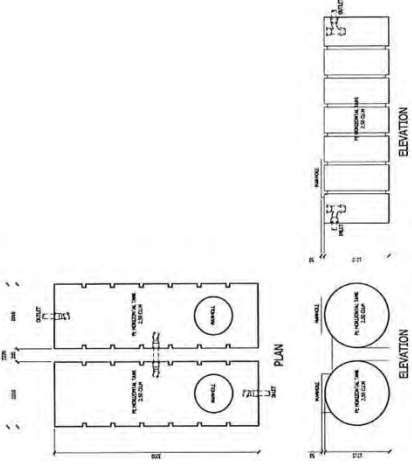
**CERTIFICATION:**

I HEREBY CERTIFY THAT THESE ARE NOT CONSTRUCTED ARTESIAN WELL WITHIN THE RANGE OF 100 FEET FROM THE PROPOSED SEPTIC TANK.

REGISTERED MASTER PLUMBER



RAINWATER TANK BLOW-UP DETAILS  
 P-100.0



SEPTIC TANK BLOW-UP DETAILS  
 P-100.0

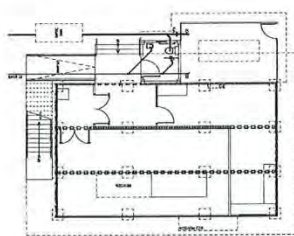
PROJECT TITLE		UNIVERSITY OF THE SAHARAS CBUI 2-STORY DATA CENTER (PHASE 2)	
APPROVED BY		ATTY. LEO B. VALAGRE LEGAL COUNSEL	
DRAWING TITLE		LOCATION & VICINITY MAP GENERAL NOTES BLOW-UP DETAILS	
SCALE	1:100	SCALE	1:200
SHEET NUMBER	P-100.0	SHEET NUMBER	R00
DATE	11/15/2024	DATE	11/15/2024
REGISTERED MASTER PLUMBER		REGISTERED MASTER PLUMBER	



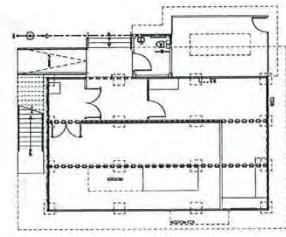


UNIVERSITY OF THE PHILIPPINES  
 DEPARTMENT OF PUBLIC WORKS AND HIGHWAYS  
 OFFICE OF THE BUILDING OFFICIAL  
 ISSUANCE REQUIREMENTS

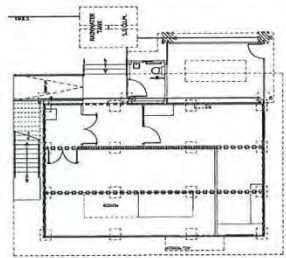
ISSUED BY: \_\_\_\_\_ DATE: \_\_\_\_\_  
 CHECKING SECTION: \_\_\_\_\_  
 BUILDING OFFICIAL: \_\_\_\_\_ DATE: \_\_\_\_\_



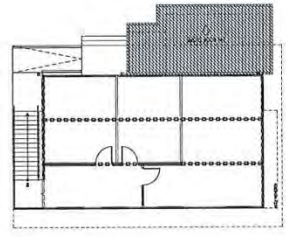
GROUND FLOOR  
 SANITARY LINE LAYOUT



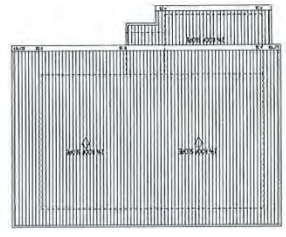
GROUND FLOOR  
 POTABLE WATERLINE LAYOUT



GROUND FLOOR  
 STORM DRAINAGE LAYOUT



SECOND FLOOR  
 STORM DRAINAGE LAYOUT



ROOF LEVEL  
 STORM DRAINAGE LAYOUT

	PROJECT TITLE UNIVERSITY OF THE PHILIPPINES CEBU 2-STORY DATA CENTER (PHASE 2)	PROJECT NUMBER P-101.0	SHEET NUMBER R00	REVISIONS
	SCALE 1:100	DRAWN BY ATTY. LEO B. MALGAR	CHECKED BY _____	DATE _____

*Leo B. Malgar*







# Section VIII. Bill of Quantities

\*Please refer to attached details.

REPUBLIC OF THE PHILIPPINES

PROJECT TITLE : PROPOSED 2-STORY DATA CENTER (PHASE 2)  
 LOCATION : UP CEBU LAHUG, CEBU CITY  
 SUBJECT : COST ESTIMATE AND SCOPE OF WORKS  
 DURATION : 150 CALENDAR DAYS  
 ABC : P7,792,866.23

## BILL OF QUANTITIES

ITEM	WORK DESCRIPTION	UNIT	QTY.	UNIT COST	AMOUNT
I	GENERAL REQUIREMENTS	Lot			
	Mobilization/Demobilization				
	Power and water Consumptions				
	Cutting of Combiner Wall Opening				
	Bonds and Insurance				
	Quality Control Program				
	Health, Safety and Environment				
	Project Billboard and signage				
	Temporary Facility				
	Protective Covering for Exposed Areas (Board up)				
	Sub-total for Item No. I				
II	PROVISION FOR SCAFFOLDINGS	Lot			
	Sub-total for Item No. II				
III	CONCRETE & REINFORCEMENT	sqm			
	Sub-total for Item No. III				
IV	METALS	sqm			
	Sub-total for Item No. IV				
V	SPECIALTY WORKS	sqm			
	Sub-total for Item No. V				
VI	CARPENTRY	sqm			
	Sub-total for Item No. VI				
VII	THERMAL & MOISTURE PROTECTION	sqm			
	Sub-total for Item No. VII				
VIII	DOORS & WINDOWS	Lot			
	Sub-total for Item No. VIII				
IX	FINISHES	sqm			
	Sub-total for Item No. IX				
X	PLUMBING	Lot			
	Sub-total for Item No. X				
XI	ELECTRICAL	Lot			
	Sub-total for Item No. XI				
XII	MECHANICAL	Lot			
	Sub-total for Item No. XII				
XIII	ELECTRONICS	Lot			
	Sub-total for Item No. XIII				
	TOTAL PROJECT COST				

PREPARED BY:

Ar. Jobe Ellis C. Arcadia  
 Senior Architectural Associate

ENDORSED:

Engr. Ruel E. Limod  
 Supervising Engineering Associate

ENDORSED:

Mazel A. Trancito  
 Vice-Chancellor for Administration

ENDORSED:

Engr. Nicodimus S. Dela  
 Senior Engineering Associate

ENDORSED:

Jonathan P. Victoria  
 Information Technology Center (ITC)

APPROVED BY:

Abel B. Rodriguez  
 Chancellor, UP Cebu

**PROJECT TITLE**  
**LOCATION**  
**SUBJECT**  
**DURATION**  
**ABC**

: PROPOSED 2-STOREY DATA CENTER (PHASE 2)  
 : UP CEBU, LAHUG, CEBU CITY  
 : COST ESTIMATE AND SCOPE OF WORKS  
 :150 CALENDAR DAYS  
**₱7,792,866.23**

**UNIT COST ANALYSIS**

**I. GENERAL REQUIREMENTS**

Quantity: 1  
 Unit: Lot

<b>A. Materials:</b>					
Description	Qty.	Unit	Unit Cost	Amount	
Mobilization/Demobilization		Lot			
Power and water Consumptions		Lot			
Cutting of Container Wall Opening		Lot			
Bonds and Insurance		Lot			
Quality Control Program		Lot			
Health, Safety and Environment		Lot			
Project Billboard and signage		Lot			
Temporary Facility		Lot			
Protective Covering for Exposed Areas (Board up)		Lot			
(other work item not mentioned but necessary to complete the Concrete & Reinforcement)					
				<b>Material Cost:</b>	
<b>B. Equipment:</b>					
Description	Qty.	Days	Rental / Day	Amount	
				<b>Equipment Cost:</b>	
<b>C. Labor:</b>					
Description	Qty.	Days	Rate/Day	Amount	
				<b>Labor Cost:</b>	
				<b>Total Direct Cost (A+B+C)=</b>	

**II. PROVISION FOR SCAFFOLDINGS**

Quantity: 1  
 Unit: Lot

<b>A. Materials:</b>					
Description	Qty.	Unit sets	Unit Cost	Amount	
Scaffolding rental/month (complete sets)					
				<b>Material Cost:</b>	
<b>B. Equipment:</b>					
Description	Qty.	Days	Rental / Day	Amount	
				<b>Equipment Cost:</b>	
<b>C. Labor:</b>					
Description	Qty.	Days	Rate/Day	Amount	
Foreman					
Carpenter					
labourer/helpers					
				<b>Labor Cost:</b>	
				<b>Total Direct Cost (A+B+C)=</b>	
				<b>Indirect Cost:</b>	
				<b>Profit</b>	
				<b>OCM</b>	
				<b>[Sum of (EDC+ OCM + PROFIT) x 12% ] TAX</b>	
				<b>Total Cost =</b>	
				<b>Unit Cost =</b>	

**NOTE:**

1. This document serves as a reference for the contractor's estimate.
2. The contractor is required to submit their own bill of quantities for the completion of the project.

**III. CONCRETE & REINFORCEMENT**

Quantity:  
Unit: sqm.

<b>A. Materials:</b>					
Description	Qty.	Unit	Unit Cost	Amount	
<b>Footings</b>					
Formworks		sqm			
Rebars, Grade 60		kg.			
Concrete, 3000 psi		cum.			
Gravel Bedding		cum.			
<b>Pedestal</b>					
Formworks		sqm			
Rebars, Grade 60		kg.			
Rebars, Grade 40		kg.			
Concrete, 3000 psi		cum.			
<b>Slab on Grade (Stairs, Ramp)</b>					
Formworks		sqm			
Rebars, Grade 40		kg.			
Concrete, 3000 psi		cum.			
Gravel Bedding		cum.			
Consumables(5% of material Cost)		lot			
(other work item not mentioned but necessary to complete the Concrete & Reinforcement)					
					<b>Material Cost:</b>
<b>B. Equipment:</b>					
Description	Qty.	Days Lot	Rental / Day	Amount	
Minor Tools(15% of Labor cost)					
					<b>Equipment Cost:</b>
<b>C. Labor:</b>					
Description	Qty.	Days	Rate/Day	Amount	
Foreman					
labourer/Helper					
Mason					
					<b>Labor Cost:</b>
					<b>Total Direct Cost (A+B+C) =</b>
					<b>Indirect Cost:</b>
					<b>Profit</b>
					<b>OCM</b>
					<b>[Sum of (EDC+ OCM + PROFIT) x 12% ] TAX</b>
					<b>Total Cost =</b>
					<b>Unit Cost =</b>

**IV. METALS**

Quantity:  
Unit: sqm.

<b>A. Materials:</b>					
Description	Qty.	Unit	Unit Cost	Amount	
<b>Steel Stair (To 2nd Floor)</b>					
3mm Thk. 50mm x 150mm C-Channel Stringer (6m length)		pcs.			
3mm thk. 4' x 8' S/S Checkered Plate		pcs.			
1.5" x 1.5" x 6m Angle Bars		pcs.			
10mm Thk. 4' x 8' MS Base Plate (For general metal works baseplate use)		pcs.			
1mm Thk. 1 1/2" x 1 1/2" S/S Square Tube Post (6m length)		pcs.			
50mmx50mm S/S Tubular Handrail (6m length)		pcs.			

**NOTE:**

1. This document serves as a reference for the contractor's estimate.
2. The contractor is required to submit their own bill of quantities for the completion of the project.



<b>Steel Stair (Ground Floor Access)</b>					
1mm Thk. 1 1/2" x 1 1/2" S/S Square Tube Post (6m length)				pcs.	
50mmx50mm S/S Tubular Handrail (6m length)				pcs.	
<b>Railings (Corridor)</b>					
50mmx50mm S/S Tubular Handrail (6m length)				pcs.	
1mm Thk. 1 1/2" x 1 1/2" S/S Square Tube Post (6m length)				pcs.	
1mm Thk. 1" x 1" x S/S Square Tube (6m length)				pcs.	
<b>Post (Stairs)</b>					
GI Pipe, 3", Sch40, Seamless (6m length)				length	
<b>PWD Ramp</b>					
50mmx50mm S/S Tubular Handrail (6m length)				pcs.	
1mm Thk. 1 1/2" x 1 1/2" S/S Square Tube Post (6m length)				pcs.	
<b>PWD Toilet</b>					
<b>Floor</b>					
2mm thk. 4' x 8' S/S Checkered Plate				pcs.	
3mm Thk. 50mm x 150mm C-Channel Stringer (6m length)				pcs.	
<b>Wall (1.2m High)</b>					
2mm thk. 4' x 8' S/S Checkered Plate				pcs.	
<b>Post</b>					
GI Pipe, 3", Sch40, Seamless (6m length)				length	
<b>Beam</b>					
3mm Thk. 50mm x 150mm C-Channel Stringer (6m length)				length	
Flip-up Grab Bar				set	
L-type Grab Bar				set	
<b>ACCU Support</b>					
<b>Second Floor Level</b>					
4mm Thk. 2" x 2" x 6m Angle Bars				pcs	
Consumables (15% of material Cost) (welding rods, etc.)				lot	
(other work item not mentioned but necessary to complete the Metals)					
<b>B. Equipment:</b>					<b>Material Cost:</b>
	<u>Description</u>	<u>Qty.</u>	<u>Days</u> <u>Let</u>	<u>Rental / Day</u>	<u>Amount</u>
Minor Tools(15% of Labor cost)					
					<b>P 0.00</b>
<b>C. Labor:</b>					
	<u>Description</u>	<u>Qty.</u>	<u>Days</u>	<u>Rate/Day</u>	<u>Amount</u>
Foreman					
labourer/Helper					
Welder					
					<b>Labor Cost:</b>
					<b>Total Direct Cost (A+B+C)=</b>
					<b>Indirect Cost:</b>
					<b>Profit</b>
					<b>OCM</b>
					<b>[Sum of (EDC+ OCM + PROFIT) x 12% ] TAX</b>
					<b>Total Cost =</b>
					<b>Unit Cost =</b>

**NOTE:**

1. This document serves as a reference for the contractor's estimate.
2. The contractor is required to submit their own bill of quantities for the completion of the project.

**V. SPECIALTY WORKS**

Quantity:  
Unit: sqm.

<b>A. Materials:</b>						
Description	Qty.	Unit	Unit Cost	Amount		
40' High Cube Shipping Container (used) (including delivery)		sets				
Consumables(10% of material Cost) (repair of defects, waterproofing)		lot				
UP Cebu & Data Commons Acrylic Signage (supply & install) W1715mm X H700mm X D50mm		lot				
<b>Furnitures (supply &amp; install)</b>						
Swivel Clerical Chair w/ Armrest Fabric seat & back, PVC armrest & starbase		sets				
Freestanding Table L120cm x W60cm x H75cm MFC table, Bullnose edge w/ Pencil Drawer		sets				
Table L80cm x W80cm x H75cm		sets				
Freestanding Table L160cm x W60cm x H75cm MFC table, Bullnose edge, steel legs		set				
Stackable Chair Plastic seat & back (Black) Chrome Frame		sets				
Base Cabinet (supply & install) L90cm x W56cm x H85cm		sets				
Hanging Cabinet (supply & install) L90cm x W33cm x H72cm		sets				
Vegetation surrounding MRF Thai Bamboo (supply & plant)		lot				
*including labor & equipment*						
(other work item not mentioned but necessary to complete the Specialty Works)						
					<b>Material Cost:</b>	
<b>B. Equipment:</b>						
Description	Qty.	Days Lot	Rental / Day	Amount		
Minor Tools(15% of Labor cost)						
<b>C. Labor:</b>						
Description	Qty.	Days	Rate/Day	Amount		
Foreman labourer/Helper Painter						
					<b>Labor Cost:</b>	
					<b>Total Direct Cost (A+B+C)=</b>	
					<b>Indirect Cost:</b>	
					Profit	
					OCM	
					<b>[Sum of (EDC+ OCM + PROFIT) x 12% ] TAX</b>	
					<b>Total Cost =</b>	
					<b>Unit Cost =</b>	

**NOTE:**

1. This document serves as a reference for the contractor's estimate.
2. The contractor is required to submit their own bill of quantities for the completion of the project.

**VI. CARPENTRY**

Quantity:  
Unit: sqm.

<b>A. Materials:</b>					
Description	Qty.	Unit	Unit Cost	Amount	
<b>Ground Floor</b>					
<u>Walls</u>					
9mm thk. Gypsum Board		pcs.			
0.5mm Thk. Carrying Channel 12mm x 38mm (5 meters)		pcs.			
<u>Ceiling</u>					
9mm thk. Gypsum Board		pcs.			
0.5mm Thk. 19mm x 50mm Double Furring (5 meters)		pcs.			
<b>Second Floor</b>					
<u>Walls</u>					
9mm thk. Gypsum Board		pcs.			
0.5mm Thk. Carrying Channel 12mm x 38mm (5 meters)		pcs.			
<u>Ceiling</u>					
9mm thk. Gypsum Board		pcs.			
0.5mm Thk. 19mm x 50mm Double Furring (5 meters)		pcs.			
Consumables(5% of material Cost)		lot			
(other work item not mentioned but necessary to complete the Carpentry)					
<b>Material Cost:</b>					
<b>B. Equipment:</b>					
Description	Qty.	Days Lot	Rental / Day	Amount	
Minor Tools(15% of Labor cost)					
<b>Equipment Cost:</b>					<b>P 0.00</b>
<b>C. Labor:</b>					
Description	Qty.	Days	Rate/Day	Amount	
Foreman					
labourer/Helper					
Carpenter					
<b>Labor Cost:</b>					
<b>Total Direct Cost (A+B+C) =</b>					
<b>Indirect Cost:</b>					
<b>Profit</b>					
<b>OCM</b>					
<b>[Sum of (EDC+ OCM + PROFIT) x 12% ] TAX</b>					
<b>Total Cost =</b>					
<b>Unit Cost =</b>					

**VII. THERMAL & MOISTURE PROTECTION**

Quantity:  
Unit: sqm.

<b>A. Materials:</b>					
Description	Qty.	Unit	Unit Cost	Amount	
<u>Walls</u>					
<u>Ground Floor</u>					
Rockwool Insulation		rolls			
50mm Thk. X 0.60m x 5m					
<u>2nd Floor</u>					
Rockwool Insulation		rolls			
50mm Thk. X 0.60m x 5m					

**NOTE:**

1. This document serves as a reference for the contractor's estimate.
2. The contractor is required to submit their own bill of quantities for the completion of the project.



<b>Roof</b>					
<u>Main Roof</u>					
GA 25 x 4' wide Rib-Type Roofing (Prepainted)				lm	
4mm Thk. G.I. Gutter (Painted) 8' length				length	
4mm Thk. G.I. Gutter End Flashing (Painted) 8' length				length	
12mm Thk. 12" Senepa Fascia Board 8' length				length	
10.00mm Thk. Double Insulation Foam (50 meters roll) (for main & secondary roof)				rolls	
<u>Rafter</u>					
1.5mm Thk. B.I. Tubular 50mm x 150mm (6m length)				pcs.	
<u>Girt</u>					
1.5mm Thk. B.I. Tubular 50mm x 150mm (6m length)				pcs.	
6mm Thk. 2"x2" x 6m Angle Bar (Purlins Clip Angle)				length	
10mm Ø Round Bar x 6m (Sag Rods)				length	
2"x3" x 6m C-Purlin Roof Framing				length	
<u>Cross Brace</u>					
16mm Ø Round Bar x 6m Turnbuckle				length sets	
Consumables (5% of material Cost)				lot	
(other work item not mentioned but necessary to complete the Thermal & Moisture Protection)					
					<b>Material Cost:</b>
<b>B. Equipment:</b>					
	<u>Description</u>	<u>Qty.</u>	<u>Days Lot</u>	<u>Rental / Day</u>	<u>Amount</u>
Minor Tools(15% of Labor cost)					
					<b>Equipment Cost:</b>
<b>C. Labor:</b>					
	<u>Description</u>	<u>Qty.</u>	<u>Days</u>	<u>Rate/Day</u>	<u>Amount</u>
Foreman					
labourer/Helper					
Installer/Welder					
					<b>Labor Cost:</b>
					<b>Total Direct Cost (A+B+C)=</b>
					<b>Indirect Cost:</b>
					Profit
					OCM
					<b>[Sum of (EDC+ OCM + PROFIT) x 12% ] TAX</b>
					<b>Total Cost =</b>
					<b>Unit Cost =</b>

**VIII. DOORS & WINDOWS**

Quantity:  
Unit: Lot

<b>A. Materials:</b>					
	<u>Description</u>	<u>Qty.</u>	<u>Unit sets</u>	<u>Unit Cost</u>	<u>Amount</u>
UPVC w/ Glass Door complete w/ Door Jamb complete w/ Hardware & Accessories					
PVC Door w/ Door Jamb, complete w/ Hardware & Accessories					
Sliding Glass Windows complete w/ Hardware & Accessories					

**NOTE:**

1. This document serves as a reference for the contractor's estimate.
2. The contractor is required to submit their own bill of quantities for the completion of the project.

Awning Glass Windows complete w/ Hardware & Accesories				sets	
Awning Glass Windows (Toilet) complete w/ Hardware & Accesories				sets	
(other work item not mentioned but necessary to complete the Doors & Windows)					
<b>B. Equipment:</b>					<b>Material Cost:</b>
Minor Tools(15% of Labor cost)	<u>Description</u>	<u>Qty.</u>	<u>Days Lot</u>	<u>Rental / Day</u>	<u>Amount</u>
					<b>Equipment Cost: P 0.00</b>
<b>C. Labor:</b>					
Foreman labourer/Helper Installer	<u>Description</u>	<u>Qty.</u>	<u>Days</u>	<u>Rate/Day</u>	<u>Amount</u>
					<b>Labor Cost:</b>
					<b>Total Direct Cost (A+B+C)=</b>
					<b>Indirect Cost:</b>
					<b>Profit</b>
					<b>OCM</b>
					<b>[Sum of (EDC+ OCM + PROFIT) x 12% ] TAX</b>
					<b>Total Cost =</b>
					<b>Unit Cost =</b>

**XIV. FINISHES**

Quantity:  
Unit: sqm.

<b>A. Materials:</b>					
	<u>Description</u>	<u>Qty.</u>	<u>Unit</u>	<u>Unit Cost</u>	<u>Amount</u>
<b>Ground Floor</b>					
<u>Exterior Walls</u>					
	Arcylic Semi-Gloss Latex Paint (2 coats)		gal.		
<u>Interior Walls</u>					
	Interior Primer		gal.		
	Arcylic Semi-Gloss Latex Paint (1 coat)		gal.		
<u>Ceiling</u>					
	Interior Primer		gal.		
	Arcylic Semi-GlossPaint Latex (1 coat)		gal.		
<u>Floor</u>					
	Rubberized Linoleum Sheet		sqm		
	Premium Contact Cement		gal.		
	Epoxy Coating		gal.		
<u>Metal Works</u>					
	Red Lead Primer		gal.		
	Quick Drying Enamel Paint		gal.		
<b>Second Floor</b>					
<u>Exterior Walls</u>					
	Arcylic Semi-Gloss Latex Paint (2 coats)		gal.		
<u>Interior Walls</u>					
	Interior Primer		gal.		
	Arcylic Semi-GlossPaint Latex (1 coat)		gal.		
<u>Ceiling</u>					
	Interior Primer		gal.		
	Arcylic Semi-GlossPaint Latex (1 coat)		gal.		

**NOTE:**

1. This document serves as a reference for the contractor's estimate.
2. The contractor is required to submit their own bill of quantities for the completion of the project.

<b>Floor</b>					
Rubberized Linoleum Sheet				sqm	
Premium Contact Cement				gal.	
Epoxy Coating				gal.	
Consumables (5% of material Cost)				lot	
(other work item not mentioned but necessary to complete the Finishes)					
<b>Material Cost:</b>					
<b>B. Equipment:</b>					
	<u>Description</u>	<u>Qty.</u>	<u>Days Lot</u>	<u>Rental / Day</u>	<u>Amount</u>
Minor Tools(15% of Labor cost)					
<b>Equipment Cost:</b>					<b>P 0.00</b>
<b>C. Labor:</b>					
	<u>Description</u>	<u>Qty.</u>	<u>Days</u>	<u>Rate/Day</u>	<u>Amount</u>
Foreman					
labourer/Helper					
Painter/Installer					
<b>Labor Cost:</b>					
<b>Total Direct Cost (A+B+C)=</b>					
<b>Indirect Cost:</b>					
<b>Profit</b>					
<b>OCM</b>					
<b>[Sum of (EDC+ OCM + PROFIT) x 12% ] TAX</b>					
<b>Total Cost =</b>					
<b>Unit Cost =</b>					

**X. PLUMBING**

Quantity: 1.00  
Unit: Lot

<u>A. Materials:</u>	<u>Description</u>	<u>Qty.</u>	<u>Unit</u>	<u>Unit Cost</u>	<u>Amount</u>
<u>Water Supply Lines (PPR)</u>					
	25mm Ø		length		
	1"Ø Tee		pcs.		
	1"Ø 90deg. Elbow		pcs.		
	1"Ø Union Brass		pcs.		
	1"Ø Gate Valve		pcs.		
	1"Ø Swing Check Valve		pcs.		
<u>Sanitary &amp; Storm Drainage System</u>					
	110mm Ø PVC Pipe		length		
	63mm Ø PVC Pipe		length		
	3" dia PVC Downspout		pcs.		
	2"x3" PVC DS Elbow		pcs.		
	4" Ø PVC C.O.		pcs.		
	Wye		pcs.		
	Downspout Strainer Stainless		sets		
	P-trap		pcs.		
<u>Plumbing Fixtures, Accessories &amp; Appurtenances</u>					
	Water Closet		sets		
	Bidet		sets		
	Lavatory		sets		
	Floor Drain		sets		
	Faucet		sets		
	PE Horizontal Septic Tank, 2.5m3		sets		
	Catch Basin		lot		
	Consumables (5% of material Cost)		lot		

**NOTE:**

1. This document serves as a reference for the contractor's estimate.
2. The contractor is required to submit their own bill of quantities for the completion of the project.

(other work item not mentioned but necessary to complete the Auxillary Works)					
					<b>Material Cost:</b>
<b>B. Equipment:</b>					
	<u>Description</u>	<u>Qty.</u>	<u>Days Lot</u>	<u>Rental / Day</u>	<u>Amount</u>
Minor Tools(15% of Labor cost)					
					<b>Equipment Cost: P 0.00</b>
<b>C. Labor:</b>					
	<u>Description</u>	<u>Qty.</u>	<u>Days</u>	<u>Rate/Day</u>	<u>Amount</u>
Foreman labourer/Helper Plumber					
					<b>Labor Cost:</b>
					<b>Total Direct Cost (A+B+C)=</b>
					<b>Indirect Cost:</b>
					<b>Profit</b>
					<b>OCM</b>
					<b>[Sum of (EDC+ OCM + PROFIT) x 12% ] TAX</b>
					<b>Total Cost =</b>
					<b>Unit Cost =</b>

**XI. ELECTRICAL**

Quantity:  
Unit: Lot

<b>A. Materials:</b>					
	<u>Description</u>	<u>Qty.</u>	<u>Unit</u>	<u>Unit Cost</u>	<u>Amount</u>
	Pvc Pipe 20mm2 dia.		lm		
	Pvc Solvent Cement 300cc		cans		
	G.I. Wires #16		kgs		
	Electrical Tape Big, Armak		pcs		
	Junction Box Metal 4x4		pcs		
	Utility Box Metal 2 x 4		pcs		
	Special Convenience Outlet 3 Prong		set		
	Ordinary Convenience Outlet 3 Prong		sets		
	30 Amps. Nema 3R Circuit Breaker w/ enclosure ( weatherproof)		sets		
	Troofer Lights 36 watts		sets		
	Pin Lights 9 watts		sets		
	3.5mm2 thhn / thwn wire		lm		
	5.5mm2 thhn / thwn wire		lm		
	8.0mm2 thhn / thwn wire		lm		
	Pull Box ( as per actual site condition)		lot		
	Consumables (5% of material Cost)		lot		
(other work item not mentioned but necessary to complete the Electrical Works)					
					<b>Material Cost:</b>

**NOTE:**

1. This document serves as a reference for the contractor's estimate.
2. The contractor is required to submit their own bill of quantities for the completion of the project.

<b>B. Equipment:</b>					
Description	Qty.	Days	Rental / Day	Amount	
Minor Tools(15% of Labor cost)		Lot			
<b>Equipment Cost:</b>					
<b>C. Labor:</b>					
Description	Qty.	Days	Rate/Day	Amount	
Foreman labourer/Helper Electrician					
<b>Labor Cost:</b>					
<b>Total Direct Cost (A+B+C)=</b>					
<b>Indirect Cost:</b>					
<b>Profit</b>					
<b>OCM</b>					
<b>[Sum of (EDC+ OCM + PROFIT) x 12% ] TAX</b>					
<b>Total Cost =</b>					
<b>Unit Cost =</b>					

## XII. MECHANICAL

Quantity:  
Unit: Lot

<b>A. Materials:</b>					
Description	Qty.	Unit	Unit Cost	Amount	
2 HP Split Type Air Conditioning Unit (Supply & Install)		sets			
150 KVA - 60Hz Silent Type Genset (Supply & Install)		set			
Consumables (5% of material Cost)		lot			
(other work item not mentioned but necessary to complete the Auxiliary Works)					
<b>Material Cost:</b>					
<b>B. Equipment:</b>					
Description	Qty.	Days	Rental / Day	Amount	
Minor Tools(15% of Labor cost)		Lot			
<b>Equipment Cost:</b>					
<b>C. Labor:</b>					
Description	Qty.	Days	Rate/Day	Amount	
Foreman labourer/Helper Electrician/Installer					
<b>Labor Cost:</b>					
<b>Total Direct Cost (A+B+C)=</b>					
<b>Indirect Cost:</b>					
<b>Profit</b>					
<b>OCM</b>					
<b>[Sum of (EDC+ OCM + PROFIT) x 12% ] TAX</b>					
<b>Total Cost =</b>					
<b>Unit Cost =</b>					

## XIII. ELECTRONICS

Quantity:  
Unit: Lot

<b>A. Materials:</b>					
Description	Qty.	Unit	Unit Cost	Amount	
Pvc Pipe 20mm2 dia.		lm			
Pvc Pipe 50mm2 dia.		lm			
Utility Box 2 x 4 Metal Gauge 16		pcs			

### NOTE:

1. This document serves as a reference for the contractor's estimate.
2. The contractor is required to submit their own bill of quantities for the completion of the project.

Junction Box Metal 4 x 4 Gauge 16					pcs
Pvc Solvent Cement 300cc					cans
G. I. Wires # 16					kls.
Pull Box ( as per actual site condition)					lot
LC-LC Single Mode Fiber Patch Cable Duplex					pc
Cat6 Slimtype Patch Cable 1M - blue					pc
2 Ft Wall mount Cabinet With PDU, 2 Fans					pc
Managed Switch 48 port POE 4x10G uplinks					unit
Smart UPS Rack Mount On-Line 1000VA 900W					unit
4MP Indoor Dome IP Camera IR					unit
10G-LR SFP+					pc
Consumables (5% of material Cost)					lot
(other work item not mentioned but necessary to complete the Auxiliary Works)					
					<b>Material Cost:</b>
<b>B. Equipment:</b>					
	<u>Description</u>	<u>Qty.</u>	<u>Days Lot</u>	<u>Rental / Day</u>	<u>Amount</u>
Minor Tools(15% of Labor cost)					
					<b>Equipment Cost:</b>
<b>C. Labor:</b>					
	<u>Description</u>	<u>Qty.</u>	<u>Days</u>	<u>Rate/Day</u>	<u>Amount</u>
Foreman					
Labourer/Helper					
Installer/ Technician					
					<b>Labor Cost:</b>
					<b>Total Direct Cost (A+B+C)=</b>
					<b>Indirect Cost:</b>
					<b>Profit</b>
					<b>OCM</b>
					<b>[Sum of (EDC+ OCM + PROFIT) x 12% ] TAX</b>
					<b>Total Cost =</b>
					<b>Unit Cost =</b>

**PREPARED BY:**

**Ar. John Ellis C. Acosta**  
Senior Architectural Associate

**ENDORSED:**

**Engr. Ruel T. Lomod**  
Supervising Engineering Associate

**ENDORSED:**

**Hazel A. Trapero**  
Vice Chancellor for Administration

**ENDORSED:**

**Engr. Nicodimus B. Delda**  
Senior Engineering Associate

**ENDORSED:**

**Jonathan P. Victorero**  
Information Technology Center (ITC)

**APPROVED BY:**

**Atty. Leo B. Malagar**  
Chancellor, UP Cebu

**REPUBLIC OF THE PHILIPPINES**

**PROJECT TITLE** : PROPOSED 2-STOREY DATA CENTER (PHASE 1 & 2)  
**GROSS FLOOR AREA** : 219.96 SQ.M.  
**LOCATION** : UP CEBU, LAHUG, CEBU CITY  
**SUBJECT** : PERMITS & PROFESSIONAL LIABILITY  
**ABC** : Php1,199,676.20

**BILL OF QUANTITIES**

ITEM. NO.	DESCRIPTION	UNIT	QTY.	AMOUNT
<b>I</b>	<b>PROFESSIONAL LIABILITY</b>			
	ARCHITECT (1.5% of PROJECT CONSTRUCTION COST)			
	CIVIL ENGINEER			
	ELECTRICAL ENGINEER			
	MASTER PLUMBER			
	MECHANICAL ENGINEER			
	ELECTRONICS ENGINEER			
	<b>Sub-total for Item No. I</b>	Lot	<b>1</b>	
<b>II.</b>	<b>PRODUCTION COST</b>			
	<b>Sub-total for Item No. II</b>	Lot	<b>1</b>	
<b>III.</b>	<b>PERMITTING FEE</b>			
	LOCATIONAL CLEARANCE (CPDO - ZONING)			
	BUILDING PERMIT (OBO & BFP)			
	OCCUPANCY PERMIT (OBO & BFP)			
	VECO APPLICATION (POWER SUPPLY, TRANSFORMER)			
	NOTE: FEES DOES NOT INCLUDE POSSIBLE SURCHARGES & PENALTIES THAT MAY BE CHARGED			
	<b>Sub-total for Item No. III</b>	Lot	<b>1</b>	
	<b>TOTAL PROJECT COST</b>			

**PREPARED BY:**

**Ar. John Ellis C. Acosta**  
Senior Architectural Associate

**ENDORSED:**

**Engr. Ruel T. Lomod**  
Supervising Engineering Associate

**ENDORSED:**

**Hazel A. Trapero**  
Vice Chancellor for Administration

**ENDORSED:**

**Engr. Nicodinus R. Delda**  
Senior Engineering Associate

**ENDORSED:**

**Jonathan P. Vicofera**  
Information Technology Center (ITC)

**APPROVED BY:**

**Atty. Leo B. Malagar**  
Chancellor, UP Cebu

# ***Section IX. Checklist of Technical and Financial Documents***

## **I. TECHNICAL COMPONENT ENVELOPE**

### ***Class "A" Documents***

#### Legal Documents

- (a) Valid PhilGEPS Registration Certificate (Platinum Membership) (all pages) in accordance with Section 8.5.2 of the IRR;

#### Technical Documents

- (b) Statement of the prospective bidder of all its ongoing government and private contracts, including contracts awarded but not yet started, if any, whether similar or not similar in nature and complexity to the contract to be bid; **and**
- (c) Statement of the bidder's Single Largest Completed Contract (SLCC) similar to the contract to be bid, except under conditions provided under the rules; **and**
- (d) Special PCAB License in case of Joint Ventures **and** registration for the type and cost of the contract to be bid; **and**
- (e) Original copy of Bid Security. If in the form of a Surety Bond, submit also a certification issued by the Insurance Commission **or** original copy of Notarized Bid Securing Declaration; **and**
- (f) Project Requirements, which shall include the following:
- a. Organizational chart for the contract to be bid;
  - b. List of contractor's key personnel (e.g., Project Manager, Project Engineers, Materials Engineers, and Foremen), to be assigned to the contract to be bid, with their complete qualification and experience data;
  - c. List of contractor's major equipment units, which are owned, leased, and/or under purchase agreements, supported by proof of ownership or certification of availability of equipment from the equipment lessor/vendor for the duration of the project, as the case may be; **and**
- (g) Original duly signed Omnibus Sworn Statement (OSS) **and** if applicable, Original Notarized Secretary's Certificate in case of a corporation, partnership, or cooperative; or Original Special Power of Attorney of all members of the joint venture giving full power and authority to its officer to sign the OSS and do acts to represent the Bidder.



Financial Documents

- (h) The prospective bidder's computation of Net Financial Contracting Capacity (NFCC).

***Class "B" Documents***

- (i) If applicable, duly signed joint venture agreement (JVA) in accordance with RA No. 4566 and its IRR in case the joint venture is already in existence **or** duly notarized statements from all the potential joint venture partners stating that they will enter into and abide by the provisions of the JVA in the instance that the bid is successful.

**II. FINANCIAL COMPONENT ENVELOPE**

- (j) Original of duly signed and accomplished Financial Bid Form; **and**

Other documentary requirements under RA No. 9184

- (k) Original of duly signed Bid Prices in the Bill of Quantities; **and**
- (l) Duly accomplished Detailed Estimates Form, including a summary sheet indicating the unit prices of construction materials, labor rates, and equipment rentals used in coming up with the Bid; **and**
- (m) Cash Flow by Quarter.

