

PHILIPPINE BIDDING DOCUMENTS

Government of the Republic of the Philippines



UNIVERSITY OF THE PHILIPPINES CEBU

Construction of Dormitory (UP Cebu SRP Campus)

APPROVED BUDGET FOR THE CONTRACT

*Sixty Three Million Seven Hundred Thirty Six Thousand
Pesos*

(₱63,736,000.00)

**Sixth Edition
July 2020**

TABLE OF CONTENTS

Glossary of Terms, Abbreviations, and Acronyms	4
Section I. Invitation to Bid.....	7
Section II. Instructions to Bidders	9
1. Scope of Bid.....	9
2. Funding Information	9
3. Bidding Requirements.....	9
4. Corrupt, Fraudulent, Collusive, Coercive, and Obstructive Practices	10
5. Eligible Bidders.....	10
6. Origin of Associated Goods	10
7. Subcontracts	10
8. Pre-Bid Conference.....	11
9. Clarification and Amendment of Bidding Documents.....	11
10. Documents Comprising the Bid: Eligibility and Technical Components.....	11
11. Documents Comprising the Bid: Financial Component	12
12. Alternative Bids	12
13. Bid Prices	12
14. Bid and Payment Currencies.....	13
15. Bid Security.....	13
16. Sealing and Marking of Bids.....	13
17. Deadline for Submission of Bids	13
18. Opening and Preliminary Examination of Bids	14
19. Detailed Evaluation and Comparison of Bids.....	14
20. Post Qualification.....	14
21. Signing of the Contract	14
Section III. Bid Data Sheet	15
Section IV. General Conditions of Contract.....	17
1. Scope of Contract.....	17
2. Sectional Completion of Works	17
3. Possession of Site.....	17
4. The Contractor's Obligations.....	17
5. Performance Security	18
6. Site Investigation Reports	18

7.	Warranty.....	18
8.	Liability of the Contractor.....	18
9.	Termination for Other Causes	18
10.	Dayworks	19
11.	Program of Work.....	19
12.	Instructions, Inspections and Audits	19
13.	Advance Payment.....	19
14.	Progress Payments	19
15.	Operating and Maintenance Manuals.....	19
	Section V. Special Conditions of Contract	20
	Section VI. Specifications.....	21
	Section VII. Drawings.....	27
	Section VIII. Bill of Quantities.....	30
	Section IX. Checklist of Technical and Financial Documents	40

Glossary of Terms, Abbreviations, and Acronyms

ABC – Approved Budget for the Contract.

ARCC – Allowable Range of Contract Cost.

BAC – Bids and Awards Committee.

Bid – A signed offer or proposal to undertake a contract submitted by a bidder in response to and in consonance with the requirements of the bidding documents. Also referred to as *Proposal* and *Tender*. (2016 revised IRR, Section 5[c])

Bidder – Refers to a contractor, manufacturer, supplier, distributor and/or consultant who submits a bid in response to the requirements of the Bidding Documents. (2016 revised IRR, Section 5[d])

Bidding Documents – The documents issued by the Procuring Entity as the bases for bids, furnishing all information necessary for a prospective bidder to prepare a bid for the Goods, Infrastructure Projects, and/or Consulting Services required by the Procuring Entity. (2016 revised IRR, Section 5[e])

BIR – Bureau of Internal Revenue.

BSP – Bangko Sentral ng Pilipinas.

CDA – Cooperative Development Authority.

Consulting Services – Refer to services for Infrastructure Projects and other types of projects or activities of the GOP requiring adequate external technical and professional expertise that are beyond the capability and/or capacity of the GOP to undertake such as, but not limited to: (i) advisory and review services; (ii) pre-investment or feasibility studies; (iii) design; (iv) construction supervision; (v) management and related services; and (vi) other technical services or special studies. (2016 revised IRR, Section 5[i])

Contract – Refers to the agreement entered into between the Procuring Entity and the Supplier or Manufacturer or Distributor or Service Provider for procurement of Goods and Services; Contractor for Procurement of Infrastructure Projects; or Consultant or Consulting Firm for Procurement of Consulting Services; as the case may be, as recorded in the Contract Form signed by the parties, including all attachments and appendices thereto and all documents incorporated by reference therein.

Contractor – is a natural or juridical entity whose proposal was accepted by the Procuring Entity and to whom the Contract to execute the Work was awarded. Contractor as used in these Bidding Documents may likewise refer to a supplier, distributor, manufacturer, or consultant.

CPI – Consumer Price Index.

DOLE – Department of Labor and Employment.

DTI – Department of Trade and Industry.

Foreign-funded Procurement or Foreign-Assisted Project – Refers to procurement whose funding source is from a foreign government, foreign or international financing institution as specified in the Treaty or International or Executive Agreement. (2016 revised IRR, Section 5[b]).

GFI – Government Financial Institution.

GOCC – Government-owned and/or –controlled corporation.

Goods – Refer to all items, supplies, materials and general support services, except Consulting Services and Infrastructure Projects, which may be needed in the transaction of public businesses or in the pursuit of any government undertaking, project or activity, whether in the nature of equipment, furniture, stationery, materials for construction, or personal property of any kind, including non-personal or contractual services such as the repair and maintenance of equipment and furniture, as well as trucking, hauling, janitorial, security, and related or analogous services, as well as procurement of materials and supplies provided by the Procuring Entity for such services. The term “related” or “analogous services” shall include, but is not limited to, lease or purchase of office space, media advertisements, health maintenance services, and other services essential to the operation of the Procuring Entity. (2016 revised IRR, Section 5[r])

GOP – Government of the Philippines.

Infrastructure Projects – Include the construction, improvement, rehabilitation, demolition, repair, restoration or maintenance of roads and bridges, railways, airports, seaports, communication facilities, civil works components of information technology projects, irrigation, flood control and drainage, water supply, sanitation, sewerage and solid waste management systems, shore protection, energy/power and electrification facilities, national buildings, school buildings, hospital buildings, and other related construction projects of the government. Also referred to as *civil works or works*. (2016 revised IRR, Section 5[u])

LGUs – Local Government Units.

NFCC – Net Financial Contracting Capacity.

NGA – National Government Agency.

PCAB – Philippine Contractors Accreditation Board.

PhilGEPS - Philippine Government Electronic Procurement System.

Procurement Project – refers to a specific or identified procurement covering goods, infrastructure project or consulting services. A Procurement Project shall be described, detailed, and scheduled in the Project Procurement Management Plan prepared by the agency which shall be consolidated in the procuring entity's Annual Procurement Plan. (GPPB Circular No. 06-2019 dated 17 July 2019)

PSA – Philippine Statistics Authority.

SEC – Securities and Exchange Commission.

SLCC – Single Largest Completed Contract.

UN – United Nations.

Section I. Invitation to Bid



University of the Philippines Cebu

Invitation to Bid for the *Construction of Dormitory (UP Cebu SRP Campus)*

1. The *University of the Philippines Cebu*, through the *GAA 2023* intends to apply the sum of ***Sixty Three Million Seven Hundred Thirty Six Thousand Pesos Only (₱63,736,000.00)*** being the Approved Budget for the Contract (ABC) to payments under the contract , *Construction of Dormitory (UP Cebu SRP Campus)* with contract ID *I-2024-009*. Bids received in excess of the ABC shall be automatically rejected at bid opening.
2. The *University of the Philippines Cebu* now invites bids for the above Procurement Project. Completion of the Works is required ***180 (One Hundred Eighty)*** calendar days for the ***Construction of Dormitory (UP Cebu SRP Campus)***. Bidders should have completed a contract similar to the Project. The description of an eligible bidder is contained in the Bidding Documents, particularly, in Section II (Instructions to Bidders).
3. Bidding will be conducted through open competitive bidding procedures using non-discretionary “*pass/fail*” criterion as specified in the 2016 revised Implementing Rules and Regulations (IRR) of Republic Act (RA) No. 9184.
4. Interested bidders may obtain further information from *University of the Philippines Cebu* and inspect the Bidding Documents at the address given below from *8:00 AM – 12:00 NN, 1:00 PM – 5:00 PM*.
5. A complete set of Bidding Documents may be acquired by interested bidders on *December 28, 2024* from given address and website below *and upon payment of the applicable fee for the Bidding Documents, pursuant to the latest Guidelines issued by the GPPB, in the amount of Twenty Five Thousand Pesos Only (₱25,000.00)*. The Procuring Entity shall allow the bidder to present its proof of payment for the fees *in person or through email*.
6. The *University of the Philippines Cebu* will hold a Pre-Bid Conference on ***January 6, 2025, 10:00AM*** at *UP Cebu BAC Office, Ground Floor New Science Bldg., Gorordo Ave., Lahug, Cebu City* and via ***ZOOM***
Meeting ID: 923 8480 7023 Passcode: BACPRE-BID
which shall be open to prospective bidders.

7. Bids must be duly received by the BAC Secretariat through manual submission at the office address as indicated below on or before **January 20 2025, 10:00AM**. Late bids shall not be accepted.
8. All bids must be accompanied by a bid security in any of the acceptable forms and in the amount stated in **ITB** Clause 16.
9. Bid opening shall be on **January 20, 2025, 10:00AM** at the given address below *UP Cebu BAC Office, Ground Floor New Science Bldg., Gorordo Ave., Lahug, Cebu City*. Bids will be opened in the presence of the bidders' representatives who choose to attend the activity face to face or via ZOOM
Meeting ID: 912 0780 3445 Passcode: OPENINGBID
10. *Bidders are required to submit an electronic file of the scanned copy of their bid in USB flash drive together with the physical copy of their bid inside the bid envelope.*
11. The *University of the Philippines Cebu* reserves the right to reject any and all bids, declare a failure of bidding, or not award the contract at any time prior to contract award in accordance with Sections 35.6 and 41 of the 2016 revised Implementing Rules and Regulations (IRR) of RA No. 9184, without thereby incurring any liability to the affected bidder or bidders.
12. For further information, please refer to:

*GiNESSA Rupinta
BAC Secretariat Chair
Bids and Awards Committee
UP Cebu, Lahug, Cebu City
bac_sec.upcebu@up.edu.ph
(032) 232-8187 loc 316*

13. You may visit the following websites:



For downloading of Bidding Documents:

Dr. Lorel S. Dee
BAC Chairperson

Section II. Instructions to Bidders

1. Scope of Bid

The Procuring Entity, *University of the Philippines Cebu* invites Bids for the ***Construction of Dormitory (UP Cebu SRP Campus)***. with Project Identification Number ***I-2024-009***.

The Procurement Project (referred to herein as “Project”) is for the construction of Works, as described in Section VI (Specifications).

2. Funding Information

2.1. The GOP through the source of funding as indicated below for ***2023*** in the amount of ***Sixty Three Million Seven Hundred Thirty Six Thousand Pesos Only (₱63,736,000.00)***

2.2. The source of funding is:

NGA, the General Appropriations Act or Special Appropriations.

3. Bidding Requirements

The Bidding for the Project shall be governed by all the provisions of RA No. 9184 and its 2016 revised IRR, including its Generic Procurement Manual and associated policies, rules and regulations as the primary source thereof, while the herein clauses shall serve as the secondary source thereof.

Any amendments made to the IRR and other GPPB issuances shall be applicable only to the ongoing posting, advertisement, or invitation to bid by the BAC through the issuance of a supplemental or bid bulletin.

The Bidder, by the act of submitting its Bid, shall be deemed to have inspected the site, determined the general characteristics of the contracted Works and the conditions for this Project, such as the location and the nature of the work; (b) climatic conditions; (c) transportation facilities; (c) nature and condition of the terrain, geological conditions at the site communication facilities, requirements, location and availability of construction aggregates and other materials, labor, water, electric power and access roads; and (d) other factors that may affect the cost, duration and execution or implementation of the contract, project, or work and examine all instructions, forms, terms, and project requirements in the Bidding Documents.

4. Corrupt, Fraudulent, Collusive, Coercive, and Obstructive Practices

The Procuring Entity, as well as the Bidders and Contractors, shall observe the highest standard of ethics during the procurement and execution of the contract. They

or through an agent shall not engage in corrupt, fraudulent, collusive, coercive, and obstructive practices defined under Annex "I" of the 2016 revised IRR of RA No. 9184 or other integrity violations in competing for the Project.

5. Eligible Bidders

- 5.1. Only Bids of Bidders found to be legally, technically, and financially capable will be evaluated.
- 5.2. The Bidder must have an experience of having completed a Single Largest Completed Contract (SLCC) that is similar to this Project, equivalent to at least fifty percent (50%) of the ABC adjusted, if necessary, by the Bidder to current prices using the PSA's CPI, except under conditions provided for in Section 23.4.2.4 of the 2016 revised IRR of RA No. 9184.

A contract is considered to be "similar" to the contract to be bid if it has the major categories of work stated in the **BDS**.

- 5.3. For Foreign-funded Procurement, the Procuring Entity and the foreign government/foreign or international financing institution may agree on another track record requirement, as specified in the Bidding Document prepared for this purpose.
- 5.4. The Bidders shall comply with the eligibility criteria under Section 23.4.2 of the 2016 IRR of RA No. 9184.

6. Origin of Associated Goods

There is no restriction on the origin of Goods other than those prohibited by a decision of the UN Security Council taken under Chapter VII of the Charter of the UN.

7. Subcontracts

- 7.1. The Bidder may subcontract portions of the Project to the extent allowed by the Procuring Entity as stated herein, but in no case more than fifty percent (50%) of the Project.

The Procuring Entity has prescribed that:

Subcontracting is allowed. The portions of Project and the maximum percentage allowed to be subcontracted are indicated in the BDS, which shall not exceed fifty percent (50%) of the contracted Works.

- 7.2. The Supplier may identify its subcontractor during the contract implementation stage. Subcontractors identified during the bidding may be changed during the implementation of this Contract. Subcontractors must submit the documentary requirements under Section 23.1 of the 2016 revised IRR of RA No. 9184 and comply with the eligibility criteria specified in **ITB** Clause 5 to the implementing or end-user unit.

- 7.3. Subcontracting of any portion of the Project does not relieve the Contractor of any liability or obligation under the Contract. The Supplier will be responsible for the acts, defaults, and negligence of any subcontractor, its agents, servants, or workmen as fully as if these were the Contractor's own acts, defaults, or negligence, or those of its agents, servants, or workmen.

8. Pre-Bid Conference

The Procuring Entity will hold a pre-bid conference for this Project on the specified date and time and either at its physical address and/or through videoconferencing/webcasting via Zoom as indicated in paragraph 6 of the **IB**.

9. Clarification and Amendment of Bidding Documents

Prospective bidders may request for clarification on and/or interpretation of any part of the Bidding Documents. Such requests must be in writing and received by the Procuring Entity, either at its given address or through electronic mail indicated in the **IB**, at least ten (10) calendar days before the deadline set for the submission and receipt of Bids.

10. Documents Comprising the Bid: Eligibility and Technical Components

- 10.1. The first envelope shall contain the eligibility and technical documents of the Bid as specified in **Section IX. Checklist of Technical and Financial Documents**.
- 10.2. If the eligibility requirements or statements, the bids, and all other documents for submission to the BAC are in foreign language other than English, it must be accompanied by a translation in English, which shall be authenticated by the appropriate Philippine foreign service establishment, post, or the equivalent office having jurisdiction over the foreign bidder's affairs in the Philippines. For Contracting Parties to the Apostille Convention, only the translated documents shall be authenticated through an apostille pursuant to GPPB Resolution No. 13-2019 dated 23 May 2019. The English translation shall govern, for purposes of interpretation of the bid.
- 10.3. A valid PCAB License is required, and in case of joint ventures, a valid special PCAB License, and registration for the type and cost of the contract for this Project. Any additional type of Contractor license or permit shall be indicated in the **BDS**.
- 10.4. A List of Contractor's key personnel (e.g., Project Manager, Project Engineers, Materials Engineers, and Foremen) assigned to the contract to be bid, with their complete qualification and experience data shall be provided. These key personnel must meet the required minimum years of experience set in the **BDS**.

- 10.5. A List of Contractor's major equipment units, which are owned, leased, and/or under purchase agreements, supported by proof of ownership, certification of availability of equipment from the equipment lessor/vendor for the duration of the project, as the case may be, must meet the minimum requirements for the contract set in the **BDS**.

11. Documents Comprising the Bid: Financial Component

- 11.1. The second bid envelope shall contain the financial documents for the Bid as specified in **Section IX. Checklist of Technical and Financial Documents**.
- 11.2. Any bid exceeding the ABC indicated in paragraph 1 of the **IB** shall not be accepted.
- 11.3. For Foreign-funded procurement, a ceiling may be applied to bid prices provided the conditions are met under Section 31.2 of the 2016 revised IRR of RA No. 9184.

12. Alternative Bids

Bidders shall submit offers that comply with the requirements of the Bidding Documents, including the basic technical design as indicated in the drawings and specifications. Unless there is a value engineering clause in the **BDS**, alternative Bids shall not be accepted.

13. Bid Prices

All bid prices for the given scope of work in the Project as awarded shall be considered as fixed prices, and therefore not subject to price escalation during contract implementation, except under extraordinary circumstances as determined by the NEDA and approved by the GPPB pursuant to the revised Guidelines for Contract Price Escalation guidelines.

14. Bid and Payment Currencies

- 14.1. Bid prices may be quoted in the local currency or tradable currency accepted by the BSP at the discretion of the Bidder. However, for purposes of bid evaluation, Bids denominated in foreign currencies shall be converted to Philippine currency based on the exchange rate as published in the BSP reference rate bulletin on the day of the bid opening.
- 14.2. Payment of the contract price shall be made in:
Philippine Pesos.

15. Bid Security

- 15.1. The Bidder shall submit a Bid Securing Declaration or any form of Bid Security in the amount indicated in the **BDS**, which shall be not less than the percentage of the ABC in accordance with the schedule in the **BDS**.

- 15.2. The Bid and bid security shall be valid until *May 19, 2025*. Any bid not accompanied by an acceptable bid security shall be rejected by the Procuring Entity as non-responsive.

16. Sealing and Marking of Bids

Each Bidder shall submit one copy of the first and second components of its Bid.

The Procuring Entity may request additional hard copies and/or electronic copies of the Bid. However, failure of the Bidders to comply with the said request shall not be a ground for disqualification.

If the Procuring Entity allows the submission of bids through online submission to the given website or any other electronic means, the Bidder shall submit an electronic copy of its Bid, which must be digitally signed. An electronic copy that cannot be opened or is corrupted shall be considered non-responsive and, thus, automatically disqualified.

17. Deadline for Submission of Bids

The Bidders shall submit on the specified date and time and either at its physical address or through online submission as indicated in paragraph 7 of the **IB**.

18. Opening and Preliminary Examination of Bids

- 18.1. The BAC shall open the Bids in public at the time, on the date, and at the place specified in paragraph 9 of the **IB**. The Bidders' representatives who are present shall sign a register evidencing their attendance. In case videoconferencing, webcasting or other similar technologies will be used, attendance of participants shall likewise be recorded by the BAC Secretariat.

In case the Bids cannot be opened as scheduled due to justifiable reasons, the rescheduling requirements under Section 29 of the 2016 revised IRR of RA No. 9184 shall prevail.

- 18.2. The preliminary examination of Bids shall be governed by Section 30 of the 2016 revised IRR of RA No. 9184.

19. Detailed Evaluation and Comparison of Bids

- 19.1. The Procuring Entity's BAC shall immediately conduct a detailed evaluation of all Bids rated "*passed*" using non-discretionary pass/fail criteria. The BAC shall consider the conditions in the evaluation of Bids under Section 32.2 of 2016 revised IRR of RA No. 9184.
- 19.2. If the Project allows partial bids, all Bids and combinations of Bids as indicated in the **BDS** shall be received by the same deadline and opened and evaluated simultaneously so as to determine the Bid or combination of Bids offering the lowest calculated cost to the Procuring Entity. Bid Security as required by **ITB** Clause 16 shall be submitted for each contract (lot) separately.

19.3. In all cases, the NFCC computation pursuant to Section 23.4.2.6 of the 2016 revised IRR of RA No. 9184 must be sufficient for the total of the ABCs for all the lots participated in by the prospective Bidder.

20. Post Qualification

Within a non-extendible period of five (5) calendar days from receipt by the Bidder of the notice from the BAC that it submitted the Lowest Calculated Bid, the Bidder shall submit its latest income and business tax returns filed and paid through the BIR Electronic Filing and Payment System (eFPS), and other appropriate licenses and permits required by law and stated in the **BDS**.

21. Signing of the Contract

The documents required in Section 37.2 of the 2016 revised IRR of RA No. 9184 shall form part of the Contract. Additional Contract documents are indicated in the **BDS**.

Section III. Bid Data Sheet

ITB Clause																												
1.1	<p>The Procuring Entity is <i>University of the Philippines Cebu</i>.</p> <p>The name of the Contract is <i>Construction of Dormitory (UP Cebu SRP Campus)</i>.</p> <p>The identification number of the Contract is <i>I- 2024-009</i></p>																											
2	<p>The Funding Source is:</p> <p>The Government of the Philippines (GoP) through <i>GAA 2023</i> in the amount of <i>Sixty Three Million Seven Hundred Thirty Six Thousand Pesos Only (₱63,736,000.00)</i></p> <p>The name of the Project is <i>Construction of Dormitory (UP Cebu SRP Campus)</i>.</p>																											
3.1	No further instructions.																											
5.1	No further instructions.																											
5.2	<p>Bidding is restricted to eligible bidders as defined in ITB Clause 5.1.</p> <p>For this purpose, contracts similar to the Project refer to contracts which have the same major categories of work, which shall be:</p> <p style="text-align: center;"><i>General construction of residential building.</i></p>																											
5.4(a)	No further instructions.																											
5.4 (b)	For this purpose, similar contracts shall refer to contracts which have the same major categories of work in the last two years																											
7	<i>Subcontracting may be allowed.</i>																											
10.3	<i>PCAB license must be at least Medium A category B (general construction/ engineering)</i>																											
10.4	<table style="width: 100%; border-collapse: collapse;"> <thead> <tr> <th style="text-align: left;"><u>Key Personnel</u></th> <th style="text-align: left;"><u>General Experience</u></th> <th style="text-align: left;"><u>Relevant Experience</u></th> </tr> </thead> <tbody> <tr> <td>Site Engineer</td> <td>5yrs</td> <td>5 yrs residential bldg</td> </tr> <tr> <td>Safety Engineer</td> <td>3yrs</td> <td>CSH</td> </tr> <tr> <td>Project Construction manager</td> <td>5 yrs</td> <td>5 yrs (QA/QC)</td> </tr> <tr> <td>Foreman</td> <td>3 yrs</td> <td>3 yrs</td> </tr> <tr> <td colspan="3">DPWH accredited project engineer / materials engineer</td> </tr> </tbody> </table>	<u>Key Personnel</u>	<u>General Experience</u>	<u>Relevant Experience</u>	Site Engineer	5yrs	5 yrs residential bldg	Safety Engineer	3yrs	CSH	Project Construction manager	5 yrs	5 yrs (QA/QC)	Foreman	3 yrs	3 yrs	DPWH accredited project engineer / materials engineer											
<u>Key Personnel</u>	<u>General Experience</u>	<u>Relevant Experience</u>																										
Site Engineer	5yrs	5 yrs residential bldg																										
Safety Engineer	3yrs	CSH																										
Project Construction manager	5 yrs	5 yrs (QA/QC)																										
Foreman	3 yrs	3 yrs																										
DPWH accredited project engineer / materials engineer																												
10.5	<p>The minimum major equipment requirements are the following:</p> <table style="width: 100%; border-collapse: collapse;"> <thead> <tr> <th style="text-align: left;"><u>Equipment</u></th> <th style="text-align: left;"><u>Capacity</u></th> <th style="text-align: left;"><u>Number of Units</u></th> </tr> </thead> <tbody> <tr> <td>Backhoe/Excavator</td> <td></td> <td></td> </tr> <tr> <td>Grader/ compaction equipment</td> <td></td> <td></td> </tr> <tr> <td>Equipment for bored piling</td> <td></td> <td></td> </tr> <tr> <td>Crane</td> <td></td> <td></td> </tr> <tr> <td>-transit mixer; pumcrete/linecrete</td> <td></td> <td></td> </tr> <tr> <td>-site generator set</td> <td></td> <td></td> </tr> <tr> <td>-power tools/hand tools</td> <td></td> <td></td> </tr> <tr> <td>-any equipment depending on the construction methodology</td> <td></td> <td></td> </tr> </tbody> </table>	<u>Equipment</u>	<u>Capacity</u>	<u>Number of Units</u>	Backhoe/Excavator			Grader/ compaction equipment			Equipment for bored piling			Crane			-transit mixer; pumcrete/linecrete			-site generator set			-power tools/hand tools			-any equipment depending on the construction methodology		
<u>Equipment</u>	<u>Capacity</u>	<u>Number of Units</u>																										
Backhoe/Excavator																												
Grader/ compaction equipment																												
Equipment for bored piling																												
Crane																												
-transit mixer; pumcrete/linecrete																												
-site generator set																												
-power tools/hand tools																												
-any equipment depending on the construction methodology																												

12.0	<i>No further instructions.</i>
15.1	<p>The bid security shall be in the form of a Bid Securing Declaration or any of the following forms and amounts:</p> <p>a. The amount of not less than <i>One Million Two Hundred Seventy Four Thousand Seven Hundred Twenty Pesos (₱1,274,720.00)</i> if bid security is in cash, cashier's/manager's check, bank draft/guarantee or irrevocable letter of credit;</p> <p>b. The amount of not less than <i>Three Million One Hundred Eighty Six Thousand Eight Hundred Pesos (₱3,186,800.00)</i> if bid security is in Surety Bond.</p>
19.2	Partial bid is not allowed.
20	<p><i>Building permit.</i> <i>Electrical permit/ clearance for VECO connection</i> <i>Occupancy permit , Fire safety clearance</i></p>
21	<p>Additional contract documents relevant to the Project that may be required by existing laws and/or the Procuring Entity, The following shall be submitted together with the bid.</p> <p>A. The bidder's proposed</p> <ul style="list-style-type: none"> • <i>Program of Works</i> • <i>Work Schedule/ S curve/project schedule</i> • <i>Bill of Quantities / Detailed Cost Estimates</i> • <i>Manpower Schedule</i> • <i>Equipment utilization schedule</i> • <i>Construction safety and health program proposal for DOLE Approval after award and prior to commencement of works</i> • <i>Plans/ Drawings (if any))</i> <p>B. Certificate of site inspection signed by OCA</p>

Section IV. General Conditions of Contract

1. Scope of Contract

This Contract shall include all such items, although not specifically mentioned, that can be reasonably inferred as being required for its completion as if such items were expressly mentioned herein. All the provisions of RA No. 9184 and its 2016 revised IRR, including the Generic Procurement Manual, and associated issuances, constitute the primary source for the terms and conditions of the Contract, and thus, applicable in contract implementation. Herein clauses shall serve as the secondary source for the terms and conditions of the Contract.

This is without prejudice to Sections 74.1 and 74.2 of the 2016 revised IRR of RA No. 9184 allowing the GPPB to amend the IRR, which shall be applied to all procurement activities, the advertisement, posting, or invitation of which were issued after the effectivity of the said amendment.

2. Sectional Completion of Works

If sectional completion is specified in the **Special Conditions of Contract (SCC)**, references in the Conditions of Contract to the Works, the Completion Date, and the Intended Completion Date shall apply to any Section of the Works (other than references to the Completion Date and Intended Completion Date for the whole of the Works).

3. Possession of Site

3.1 The Procuring Entity shall give possession of all or parts of the Site to the Contractor based on the schedule of delivery indicated in the **SCC**, which corresponds to the execution of the Works. If the Contractor suffers delay or incurs cost from failure on the part of the Procuring Entity to give possession in accordance with the terms of this clause, the Procuring Entity's Representative shall give the Contractor a Contract Time Extension and certify such sum as fair to cover the cost incurred, which sum shall be paid by Procuring Entity.

3.2 If possession of a portion is not given by the above date, the Procuring Entity will be deemed to have delayed the start of the relevant activities. The resulting adjustments in contract time to address such delay may be addressed through contract extension provided under Annex "E" of the 2016 revised IRR of RA No. 9184.

4. The Contractor's Obligations

The Contractor shall employ the key personnel named in the Schedule of Key Personnel indicating their designation, in accordance with **ITB** Clause 10.3 and specified in the **BDS**, to carry out the supervision of the Works.

The Procuring Entity will approve any proposed replacement of key personnel only if their relevant qualifications and abilities are equal to or better than those of the personnel listed in the Schedule.

5. Performance Security

- 5.1. Within ten (10) calendar days from receipt of the Notice of Award from the Procuring Entity but in no case later than the signing of the contract by both parties, the successful Bidder shall furnish the performance security in any of the forms prescribed in Section 39 of the 2016 revised IRR.
- 5.2. The Contractor, by entering into the Contract with the Procuring Entity, acknowledges the right of the Procuring Entity to institute action pursuant to R.A. No. 3688 against any subcontractor be they an individual, firm, partnership, corporation, or association supplying the Contractor with labor, materials and/or equipment for the performance of this Contract.

6. Site Investigation Reports

The Contractor, in preparing the Bid, shall rely on any Site Investigation Reports referred to in the SCC supplemented by any information obtained by the Contractor.

7. Warranty

- 7.1. In case the Contractor fails to undertake the repair works under Section 62.2.2 of the 2016 revised IRR, the Procuring Entity shall forfeit its performance security, subject its property(ies) to attachment or garnishment proceedings, and perpetually disqualify it from participating in any public bidding. All payables of the GOP in his favor shall be offset to recover the costs.
- 7.2. The warranty against Structural Defects/Failures, except that occasioned-on force majeure, shall cover the period from the date of issuance of the Certificate of Final Acceptance by the Procuring Entity. Specific duration of the warranty is found in the SCC.

8. Liability of the Contractor

Subject to additional provisions, if any, set forth in the SCC, the Contractor's liability under this Contract shall be as provided by the laws of the Republic of the Philippines.

If the Contractor is a joint venture, all partners to the joint venture shall be jointly and severally liable to the Procuring Entity.

9. Termination for Other Causes

Contract termination shall be initiated in case it is determined *prima facie* by the Procuring Entity that the Contractor has engaged, before, or during the implementation of the contract, in unlawful deeds and behaviors relative to contract

acquisition and implementation, such as, but not limited to corrupt, fraudulent, collusive, coercive, and obstructive practices as stated in **ITB** Clause 4.

10. Dayworks

Subject to the guidelines on Variation Order in Annex “E” of the 2016 revised IRR of RA No. 9184, and if applicable as indicated in the **SCC**, the Dayworks rates in the Contractor’s Bid shall be used for small additional amounts of work only when the Procuring Entity’s Representative has given written instructions in advance for additional work to be paid for in that way.

11. Program of Work

11.1. The Contractor shall submit to the Procuring Entity’s Representative for approval the said Program of Work showing the general methods, arrangements, order, and timing for all the activities in the Works. The submissions of the Program of Work are indicated in the **SCC**.

11.2. The Contractor shall submit to the Procuring Entity’s Representative for approval an updated Program of Work at intervals no longer than the period stated in the **SCC**. If the Contractor does not submit an updated Program of Work within this period, the Procuring Entity’s Representative may withhold the amount stated in the **SCC** from the next payment certificate and continue to withhold this amount until the next payment after the date on which the overdue Program of Work has been submitted.

12. Instructions, Inspections and Audits

The Contractor shall permit the GOP or the Procuring Entity to inspect the Contractor’s accounts and records relating to the performance of the Contractor and to have them audited by auditors of the GOP or the Procuring Entity, as may be required.

13. Advance Payment

The Procuring Entity shall, upon a written request of the Contractor which shall be submitted as a Contract document, make an advance payment to the Contractor in an amount not exceeding fifteen percent (15%) of the total contract price, to be made in lump sum, or at the most two installments according to a schedule specified in the **SCC**, subject to the requirements in Annex “E” of the 2016 revised IRR of RA No. 9184.

14. Progress Payments

The Contractor may submit a request for payment for Work accomplished. Such requests for payment shall be verified and certified by the Procuring Entity’s Representative/Project Engineer. Except as otherwise stipulated in the **SCC**, materials and equipment delivered on the site but not completely put in place shall not be included for payment.

15. Operating and Maintenance Manuals

- 15.1. If required, the Contractor will provide “as built” Drawings and/or operating and maintenance manuals as specified in the **SCC**.

- 15.2. If the Contractor does not provide the Drawings and/or manuals by the dates stated above, or they do not receive the Procuring Entity’s Representative’s approval, the Procuring Entity’s Representative may withhold the amount stated in the **SCC** from payments due to the Contractor.

Section V. Special Conditions of Contract

GCC Clause	
2.0	<i>Completion of works under the contract will be reckoned from the date of receipt of the NTP but not later than seven days of its issuance</i>
4.0	<i>The procuring entity shall give possession of the part of the site to the contractor on the date of receipt of NTP. Work start notice shall be given by the contractor to the PE specifying the actual date and area of works to be approved by the PE through the OCA prior to commencement of works</i>
6	No further instructions
7.2	Not applicable
10	No dayworks are applicable to the contract.
11.1	The Contractor shall submit the final Program of Works & BOQ for final approval, together with the CARI and Construction Safety and Health Program to the OCA within five (5) calendar days from the receipt of the <i>Notice of Award</i> .
11.2	Progress Reports must be submitted every two weeks together with the updated Program of Works. The amount to be withheld for late submission of an updated Program of Work is 1% of the contract amount.
13	The amount of the advance payment is 15% of the total contract price and payments shall be made through accomplishment progress billing by the contractor as confirmed by the OCA <i>The advance payment shall be made only upon the submission to and acceptance by the procuring entity of an irrevocable standby letter of credit of equivalent value from a commercial bank, a bank guarantee or a surety bond callable upon demand, issued by a surety or insurance company duly licensed by the Insurance Commission and confirmed by the procuring entity. (Sec 4.2 Annex E of the 2016 IRR RA9184)</i>
14	Progress payment #1 may be made only upon completion of at least 30% of the contract. Materials and equipment delivered on the site but not completely put in place shall be included as accomplishment for payment, subject to verification and confirmation by the OCA. Materials submittal shall be submitted by the contractor to the OCA prior to delivery.
15.1	The following must be submitted prior to issuance of Certificate of completion. As Built drawings. Contractor's Warranty Certificate
15.2	No further instructions

Section VI. Specifications

Scope of Works: refer to attached document.

Other Requirements :

- The BOQ reflected in this bidding documents is **only for the purpose of estimating the budget for this project and will not be used as basis for the contract implementation.**
- Bidders are required to make their own BOQ/estimate to be able to come up with a responsive bid for the completion of the project.
- The winning bidder needs to submit the final BOQ, specifications, and Program of Works to complete the project, **not to exceed the amount of their bid** and contract amount for approval prior to the commencement of the project implementation. The approved BOQ , specifications, and Program of Works will be the basis for the implementation/completion of the project and computation of work accomplishment. Should there be a need for variation orders at anytime during contract implementation, the scope of the variation and the BOQ must not be part of the originally approved BOQ, specifications and Program of Works. **ALL** variation orders must be approved prior to implementation.
- Restoration of structures damaged during the implementation of the contract will be on the account of the contractor. (pathways, landscaping plant boxes, etc.)
- Safety and Health Program approved by DOLE to be submitted after award of contract before commencement of contract implementation.
- Progress reports with Updated Program of Works every two weeks must be submitted to the OCA.
- COA billboard to be installed prior to commencement of works.
- Plan for the Ingress of materials and Egress of waste materials from demolition, if any, to be approved by the OCA prior to commencement of works.

Section VII. Drawings

Refer to attached document..

Section VIII. Bill of Quantities

Refer to attached document.

Project Name: Construction of a Dormitory, UP Cebu
Location: Gorordo Ave., Lahug Cebu City
ABC: PhP 63,736,000.00
Duration: 180 days

SCOPE OF WORK :

General:

The work to be executed consists of all materials, equipment and labor, except as herein specified; and, in performing all work to be completed in accordance with the specifications, schedules and plans, which are made as integral parts thereof, including such detailed drawings as may be furnished from time to time during the execution of Work.

- 1 Staking out, establishment of lines, grades and benchmarks.
- 2 Protection of Property, work and structures, workmen and other people from damage and injury.
- 3 Stake out accurately the lines of the DORMITORY and of the other structures included in the contract and established grades therefore, after which secure approval from the Architect before any excavation work is commenced.
- 4 Erect basic batter boards and basic reference marks at such places where they will not be disturbed during the construction of the foundations.
- 5 **Structural Excavations - must be in accordance to established grade but if the required safe soil bearing capacity is not obtained at the elevation indicated in the plans, the excavation shall be continued until such safe bearing capacity is obtained. Footings and pedestals must be adjusted accordingly.**
- 6 **Filling and Backfilling** - After forms have been removed from footing/foundations and when concrete is hard to resist pressure resulting from fill, backfilling may then be done. Materials excavated may be used for backfilling. All filling shall be placed in layers not exceeding six (6) inches in thickness, each layer being thoroughly compacted and rammed by wetting, tamping and rolling. Including soil poisoning.
- 7 **Placing and Compacting Fill**
Common Fill - shall be approved site-excavated material free from roots, stumps and other perishable or objectionable matter
Select Fill - shall be placed where indicated and shall consist of crushed gravel, crushed rock, or a combination thereof. The material shall be free from adobe, vegetable matter and shall be thoroughly tamped after placing.
Before placing fill material, the surface upon which it will be placed shall be cleared of all brush roots, vegetable matter and debris, scarified and thoroughly wetted to insure good bonding between the grounds.
- 8 **Disposal of Surplus Materials - Removed construction trash and unusable materials will be hauled and discarded outside UP Cebu Lahug Campus (as per contractor choice of dumpsite)**
- 9 **Concrete and Reinforcement - Unless otherwise specified herein, concrete work shall conform to the requirements of the NSCP. Full cooperation shall be given other trades to install embedded items. Provisions shall be made for setting items not placed in forms. Before concrete is placed, embedded items shall have been inspected and tested.**
- 10 **Forms and Scaffolding - Forms shall conform to the shape, line and dimensions of the concrete structures as reflected on the plans. Forms shall be substantial and sufficiently tight to prevent leakage of water.**
Forms and shorings shall not be disturbed and shall remain in place for a minimum period of time required for curing of reinforced concrete as required by the National Building Code.
Removal of all soil debris and Housekeeping to properly place outside UP Campus.
- 11 Construct the SUB-STRUCTURE and SUPER STRUCTURE as per plan and specifications
- 12 Provide protection of existing field while working on the FOUNDATION or SUB-STRUCTURE
- 13 Provision of MEPF Stub-outs ready for the vertical expansion or the phase 02 of the Construction
- 14 Construction of Ground Floor area which should be already USABLE upon the completion of construction
- 15 Provide Project sign Board as per requirement by COA.
- 16 Clearing, Housekeeping and handover.

SPECIFICATIONS :

- 1 For the STRUCTURAL WORKS; refer to plan and specification provided; otherwise confirm with OCA/PMT office
- 2 **Concrete and Reinforcement** - Refer to plans and specifications of Structural Designer.
 - 2.1. Cement for general concrete work shall be type 1 Portland cement conforming to ASTM C150 "Specifications for Portland Cement". Cement shall be stored in moisture proof silos or sheds.
 - 2.2. Coarse Aggregates shall be either natural gravel or crushed rock conforming to the "Specifications for Concrete Aggregates" – Latest issue, ASTM C33. The maximum size of aggregates shall not be larger than one-fifth (1/5) of the narrowest dimensions between sides of the forms within which the concrete is to be cast nor larger than three-fourth (3/4) of the minimum clear spacing between reinforcing bars or between reinforcing bars and forms.
Fine aggregates shall be beach or river sand conforming to ASTM C33
 - 2.3. Concrete Aggregates". Sand particles shall be coarse, sharp, clean – free from salt, dust, loam, dirt and all foreign matter.
 - 2.4. Class A mixture shall be used for all concrete columns, footings, reinforced concrete beams and shall develop full strength in 28 days or as specified in structural computations, whichever is higher.
- 3 **Forms and Scaffolding**
 - 3.1. Forms shall conform to the shape, line and dimensions of the concrete structures as reflected on the plans.
 - 3.2. Forms shall be substantial and sufficiently tight to prevent leakage of water.
 - 3.3. Forms and shorings shall not be disturbed and shall remain in place for a minimum period of time required for curing of reinforced concrete as required by the National Building Code.
 - 3.4. Forms shall be 3/8" or 1/2" thick plywood painted with an approved form of primer or phenolic board. Used motor oil will not be allowed.

SPECIFICATIONS :

- 1 For the STRUCTURAL WORKS; refer to plan and specification provided; otherwise confirm with OCA/PMT office

CLIENTS DIRECTION :

- 1 Construction must be in accordance with the safe methodology and safety standards.
- 2 Working at heights above 1.70m shall provide safety harness with double lanyard and properly hooked to lifeline.
- 3 Prepare material approval request prior to material procurements.
- 4 Request for inspection must be requested on all activities.
- 5 Submit Method statement on all important activities.
- 6 Provide safe access for inspection.
- 7 Comply and follow all the rules and regulation of the UP Cebu Campus.
- 8 Strictly implement maximum construction safety standards at all times

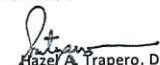
Note:

- * Power and water consumption must be paid by the contractor.
- * Handtools and minor equipment will be provided by the contractor.
- * Provide Scaffolding or any for safe access to roof and working at heights

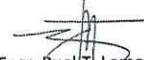
Prepared by:


Ryan Anthony G. Genobiagon
Jr Managing Architect


Endorsed by:

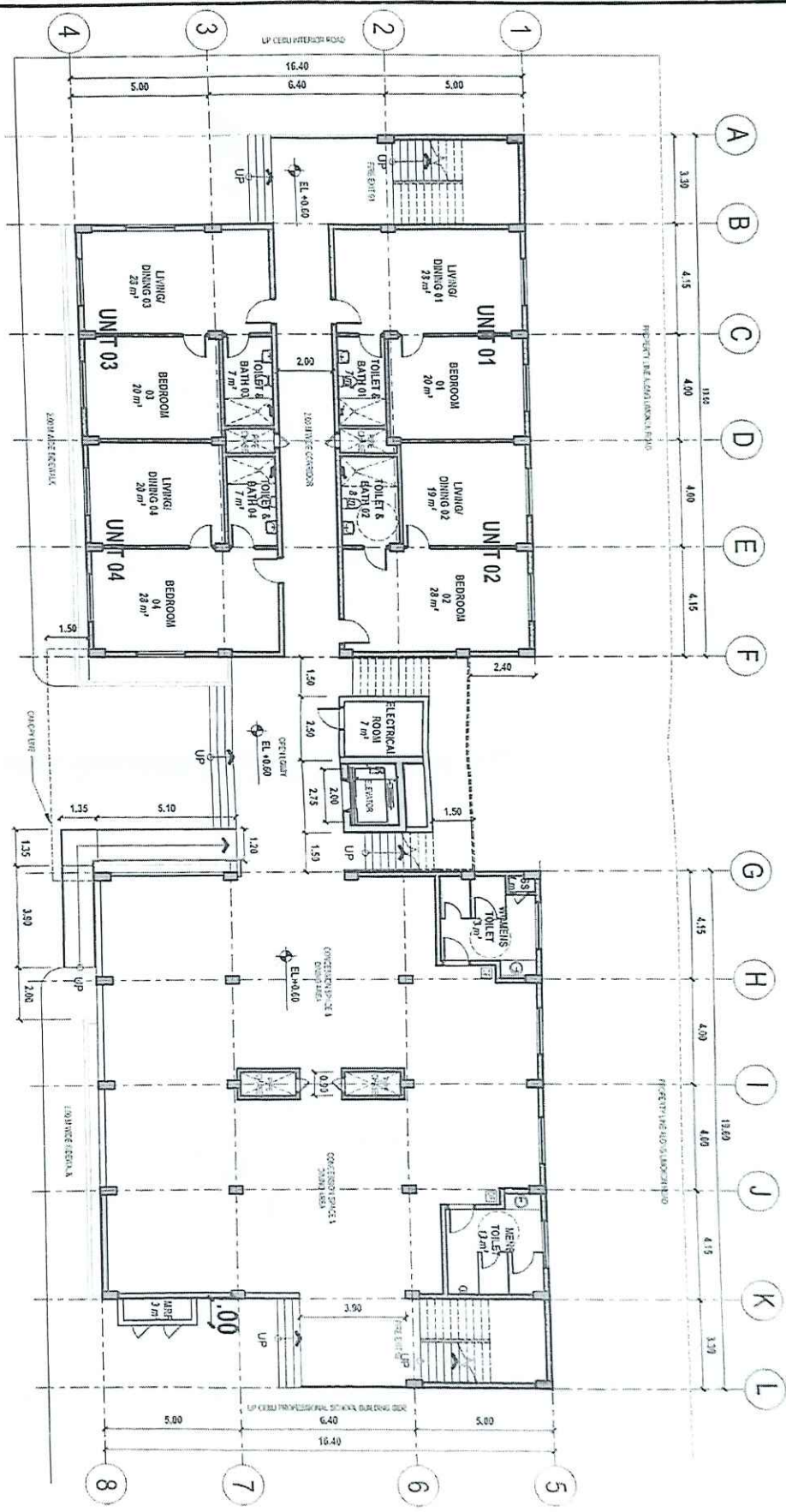

Hazel A. Trapero, DIT
Vice Chancellor for Administration
OIC-OCA

Endorsed by:


Engr. Ruel T. Lomod
Sr. Supervising Engineer - UPC-OCA

Endorsed by:


Atty. Leo B. Malagar
Chancellor, UP Cebu



1 GROUND FLOOR PLAN
 SCALE: 1:150MMS

PALALFOX

FELINO A. PALALFOX, JR.
 ARCHITECT

DATE	3/23/18	REVISION	NO. 01
BY	VP/ARCH	REVISION	NO. 02
DATE	10/21/18	REVISION	NO. 03
BY	VP/ARCH	REVISION	NO. 04

PROPOSED
UP CEBU DORMITORY
 SAMPAGAN - SOUTH ROAD PROPERTIES, CEBU CITY
 Cebu City, Philippines

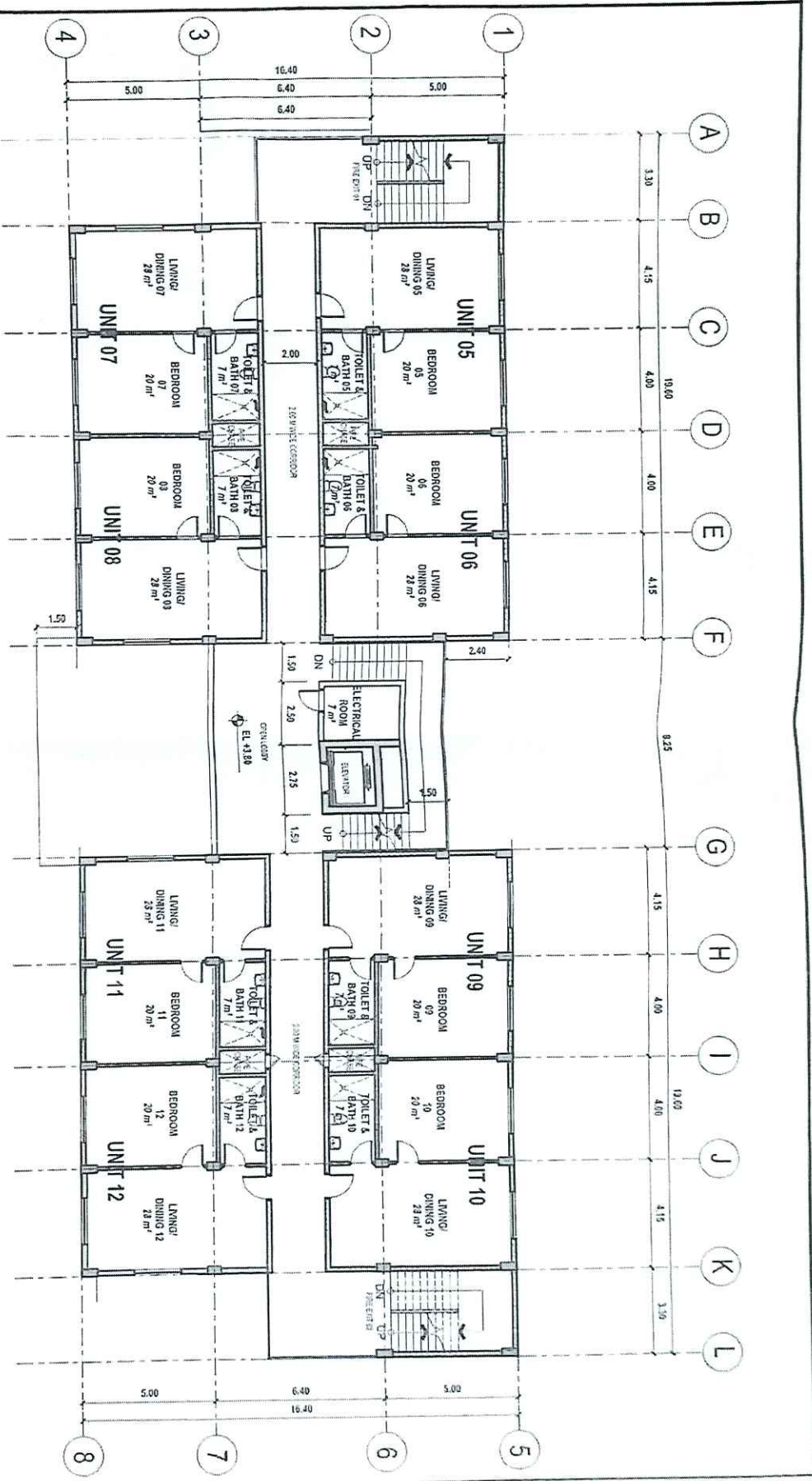
UNIVERSITY OF THE PHILIPPINES CEBU

NO.	DATE	DESCRIPTION	BY	CHECKED
1	07/20/18	PROPOSED	FP	FP
2	08/10/18	REVISION	FP	FP
3	08/10/18	REVISION	FP	FP
4	08/10/18	REVISION	FP	FP

A-1.00

18/10/2018 9:28:23 PM

[Handwritten Signature]
 18 OCT 24



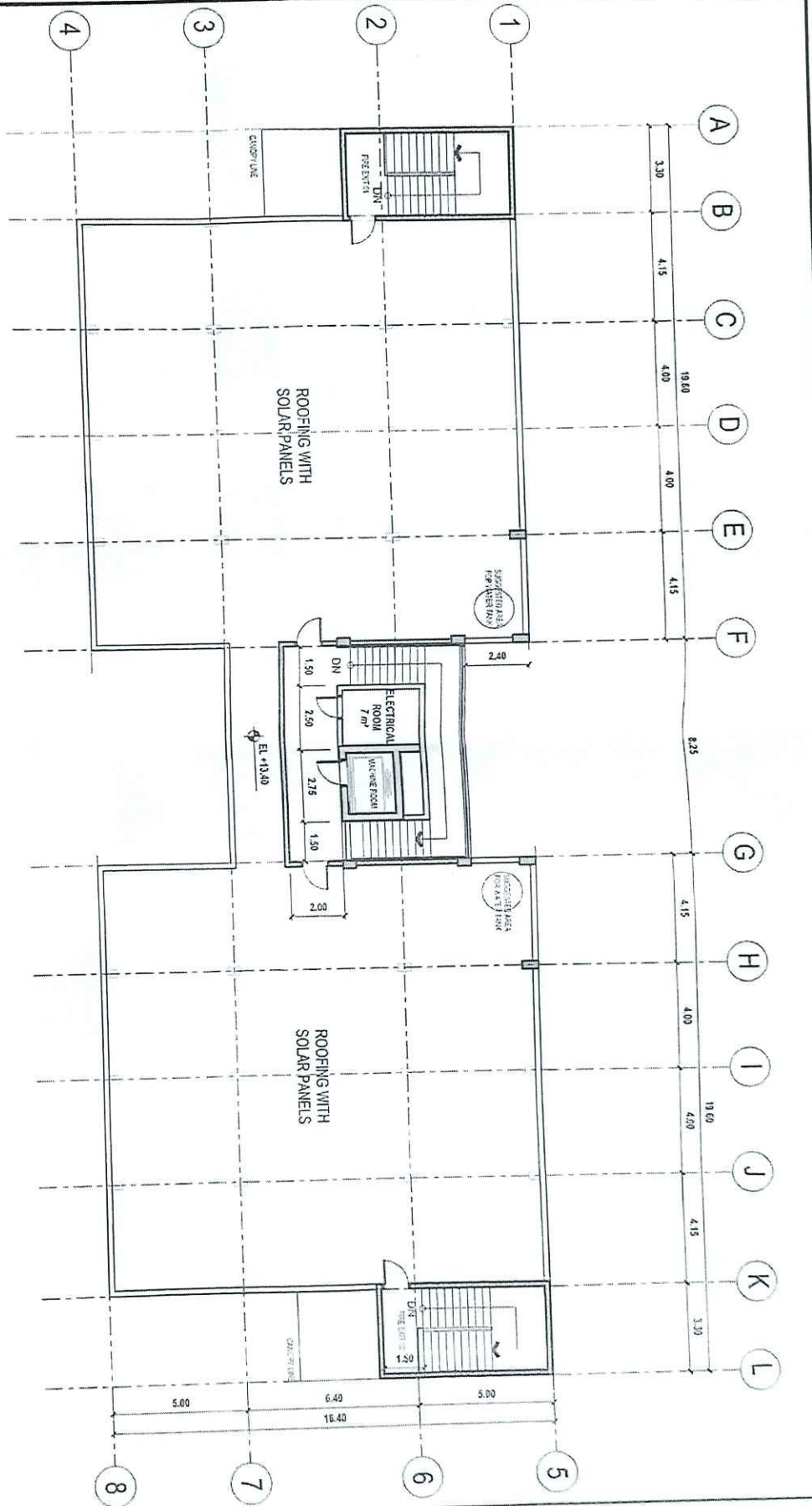
1 TYPICAL 2ND TO 4TH FLOOR PLAN
SCALE: 1:150MMS

PALATOFX

PROJECT: PROPOSED UP CEBU DOMITORY
 CLIENT: UNIVERSITY OF THE PHILIPPINES CEBU
 ARCHITECT: FELIX A. PALATOFX JR.
 DATE: 15 JAN 2014
 SCALE: A-1.20

15 09 24

NO.	REVISION	DATE
1	ISSUED FOR PERMIT	15 JAN 2014
2	FOR COMMENTS	
3	FOR COMMENTS	
4	FOR COMMENTS	



1 ROOF DECK PLAN
SCALE: 1:150MTS

PALATFOX

PROJECT INFORMATION: PROPOSED UP CEBU DORMITORY SPP CAMPUS - SOUTH ROAD PROPERTIES, CEBU CITY Cebu City, Philippines

OWNER: UNIVERSITY OF THE PHILIPPINES CEBU

DATE: 15 OCT 24

NO.	DATE	DESCRIPTION	BY	CHECKED
1				
2				
3				
4				

PROJECT NO. 20240101
SHEET NO. 01 OF 01
SCALE: 1:150

4/21/2024 10:20:28 PM

6.0 NOTES ON CONCRETE COLUMN:

6.1 CONCREMENT TIES SHALL BE PROVIDED ON ALL COLUMNS AT BEAM/COLUMN UNLESS OTHERWISE SHOWN IN PLAN.

6.2 COLUMNS AND SPIRALS SHALL BE PROTECTED UNIFORM BY A COVERING OF CONCRETE NOMINALLY WITHIN THE CORE OF MINIMUM THICKNESS OF 40mm AND NOT LESS THAN 1/2 TIMES THE SIZE OF COARSE AGGREGATE.

7.0 INTERIOR FLOOR SLAB:

7.1 ALL INTERIOR FLOOR SLABS SHALL BE AS INDICATED ON PLANS, OVER 50% COVERED BASE (CLASS B) WITH MIN. DEPTH OF 50mm (MIN. 1.50" PROTECTIVE COVER) TO VERIFY THAT THE FINISHED FLOOR TO FINISH FLOOR (FF) IS TO BE SUBMIT WRITTEN VERIFICATION TO THE ENGINEER PRIOR TO SLAB.

7.2 ALL THE WORK PHASES SHALL BE DONE UNDER A SPECIAL INSPECTOR SUPERVISION WITH A SLAB QUALIFICATION. SUCH INSPECTOR SHALL BE PROVIDED BY THE OWNER.

7.3 NO ADMIXTURE WILL BE ALLOWED IN CONCRETE SLABS. ALL THE CONCRETE MIXTURE DESIGNS WILL BE SUBMITTED TO THE STRUCTURAL ENGINEER FOR APPROVAL. UNMIXTURE DESIGNS WILL HAVE A MINIMUM OF 28% OF CEMENT FOR EVERY CUBIC METER OF CONCRETE APPLICABLE FOR CONCRETE TOPPING.

7.4 APPLY CURING COMPOUND (TWO LAYERS MINIMUM APPLIED IN DIFFERENT DIRECTIONS)

7.5 ALL ADMIXTURE WILL BE ALLOWED IN CONCRETE SLABS. ALL THE CONCRETE MIXTURE DESIGNS WILL BE SUBMITTED TO THE STRUCTURAL ENGINEER FOR APPROVAL. UNMIXTURE DESIGNS WILL HAVE A MINIMUM OF 28% OF CEMENT FOR EVERY CUBIC METER OF CONCRETE APPLICABLE FOR CONCRETE TOPPING.

7.6 APPLY CURING COMPOUND (TWO LAYERS MINIMUM APPLIED IN DIFFERENT DIRECTIONS)

7.7 VIBRATORY SCREENING SHOULD BE USED.

7.8 PROVIDE THE CAPACITY TO SPRAY MIST DURING THE POURING, FINISHING AND CURING OF THE CONCRETE.

7.9 ALL EQUIPMENT SHALL HAVE PROTECTION TO PREVENT LEAKAGE FROM EQUIPMENT ONTO THE CONCRETE SLABS.

7.10 SLAB REINFORCEMENT IS TO BE CHARGED IN PLACE AT 60% OF CENTERS PRIOR TO CONCRETE PLACEMENT. AT NO TIME SHALL CONCRETE THICKNESS ALLOWED TO VARY OR CHARGED REINFORCEMENT.

7.11 100 PIPES, DUCTS OR CONDUITS SHALL BE PLACED IN THE FLOOR SLAB UNLESS SPECIFICALLY DETAILED IN THESE PLANS OR UNLESS PRIOR WRITTEN APPROVAL IS GIVEN BY THE STRUCTURAL ENGINEER.

7.12 SPECIAL EFFORT SHALL BE PROVIDED TO MAINTAIN A LOWER TEMPERATURE THAN 27 DEGREE CELSIUS ON THE CONCRETE DURING THE INITIAL POURING AND DURING THE FIRST 48 HOURS OF CURING.

8.0 CONSTRUCTION JOINTS:

8.1 CONSTRUCTION JOINTS NOT INDICATED ON PLANS SHALL BE DONE SO AS TO LEAST IMPAIR THE STRENGTH OF THE STRUCTURE AND SHALL BE SUBJECT TO APPROVAL OF THE STRUCTURAL CONSULTANT.

8.2 STANDARD REQUIREMENTS AND LOCATIONS OF JOINTS, CONTROL JOINTS AND ISOLATION JOINTS MUST REFER TO ACI 302 AND ACI 324.3R.

9.0 NOTES ON STRUCTURAL STEEL:

9.1 WORK POINT DIMENSION SHALL BE LOCATED WITHIN 15mm OF LOCATION SHOWN IN DRAWING. ANY CHANGE IN STRUCTURAL GEOMETRY RESULTING IN MEMBER LENGTH CHANGES BY MORE THAN 5 PERCENT SHALL REQUIRE APPROVAL BY THE STRUCTURAL CONSULTANT.

9.2 ALL DIMENSIONS IN THE PLANS SHALL BE VERIFIED BY THE FABRICATOR IN THE FIELD IN COORDINATION WITH THE GENERAL CONTRACTOR.

9.3 ALL CONNECTION DETAILS SHOWWARE CONCEPTUAL ONLY. ALL CONNECTION DETAILS ARE RESPONSIBILITY OF THE GENERAL CONTRACTOR.

9.4 MATERIAL OR WORKMANSHIP NOT ON REASONABLE CONFORMANCE WITH PROVISIONS OF THIS SPECIFICATION MAY BE REJECTED AT ANY TIME DURING THE PROGRESS OF WORK.

10.0 INSURETY:

10.1 CONTRACTOR SHALL SUBMIT WITH THE FOLLOWING:

- HOLLOW LOAD BEARING UNITS;
- ASTM C291 MADE WITH NORMAL WEIGHT AGGREGATES AND WITH MINIMUM COMPRESSIVE STRENGTH OF $f_c = 7.0 \text{ MPa}$ (1000 PSI) AT 28 DAYS;
- HOLLOW NON-LOAD BEARING UNITS;
- ASTM C291 MADE WITH NORMAL WEIGHT AGGREGATES AND WITH MINIMUM COMPRESSIVE STRENGTH OF $f_c = 4.8 \text{ MPa}$ (700 PSI) AT 28 DAYS.

10.2 JOINTS SHALL BE U.S.C. TYPES AND SHALL ATTAIN A MINIMUM COMPRESSIVE STRENGTH OF 127 MPa WITHIN 28 DAYS. GROUT SHALL CONFORM TO MINIMUM COMPRESSIVE STRENGTH OF 41 MPa/cm WITHIN 28 DAYS. AGGREGATE TO CONFORM TO ASTM C1181 FOR COURSE AGGREGATE.

10.3 ALL CELLS CONTAINING REINFORCING OR ANCHOR BOLTS SHALL BE GROUTED SOLID. WHEN WALLS ARE SHOWN TO BE SOLID GROUTED, ALL CELLS SHALL BE GROUTED. ALL WALLS WHICH CANNOT BE COMPLETED IN ONE POURING RUNS SHALL BE CAST OVER WALL STOP JOINTS. ALL JOINTS SHALL BE GROUTED WITH A MINIMUM OF 100% GROUT. ALL GROUT SHALL BE CONSOLIDATED WITH A MECHANICAL VIBRATOR. MINIMUM 4.000 MPa, 20mm HEAD, SOLID GROUT ALL AREA BELOW GROUT LIFTS SHALL NOT EXCEED 2400mm IN HEIGHT PROVIDE INSPECTION AND CLEAN-OUT BOLTS OR GROUT LIFTS EXCEEDING 1200mm IN HEIGHT. REMOVE OVERHANGING WORKS. ADDITIONAL TO CELL FROM CELLS TO BE GROUTED, ON ALL REQUIRED OVERHANGING WORKS, ADDITIONAL TO CELL WHERE THE ANCHOR OCCURS, AT LEAST ONE CELL ABOVE & ONE CELL BELOW SHALL BE GROUTED.

10.6 HORIZONTAL REINFORCING SHALL BE PLACED IN BOND BEAM UNITS ONLY. PROVIDE ONE BAR VARIATION IN LOADING CRITERIA:

10.6.1 HORIZONTAL REINFORCING SHALL BE PLACED IN BOND BEAM UNITS ONLY. PROVIDE ONE BAR VARIATION IN LOADING CRITERIA: EACH BLOCK EXCEPT AT SPICES.

10.7 VERTICAL BARS IN WALLS ARE TO BE PLACED IN CENTER OF WALL UNLESS OTHERWISE SHOWN. VERTICAL BARS ARE TO BE TIED OR OTHERWISE FIXED IN POSITION AT INTERVALS OF NOT MORE THAN 192 DIAMETER AT TOP AND BOTTOM.

10.8 CMU WALL PATTERN SHALL BE COMMON BOND UNLESS OTHERWISE SPECIFIED.

10.9 CONDUITS OR PIPES SHALL NOT OCCUR IN SAME CELL AS REINFORCED BARS UNLESS APPROVED BY ENGINEER.

10.9.1 CONDUITS OR PIPES SHALL NOT OCCUR IN SAME CELL AS REINFORCED BARS UNLESS APPROVED BY ENGINEER.

10.9.2 CONDUITS OR PIPES SHALL NOT OCCUR IN SAME CELL AS REINFORCED BARS UNLESS APPROVED BY ENGINEER.

11.0 PENETRATIONS AND CAST-IN ITEMS:

11.1 IT SHALL BE THE RESPONSIBILITY OF THE GENERAL CONTRACTOR TO COORDINATE THE LOCATION AND DEPTH OF PENETRATIONS AND CAST-IN ITEMS IN THE CONCRETE INCLUDING BOLTS, BRACKETS, SWITCH BARS, ROCKERS AND THE LIKE.

11.2 WHERE ANY PENETRATIONS OR CAST-IN ITEMS DISPLACE THE REINFORCEMENT, THE ARRANGEMENT OF THE REINFORCEMENT SHALL BE APPROVED BY THE STRUCTURAL CONSULTANT. UNDER NO CIRCUMSTANCES IS THE REINFORCEMENT TO BE DISPLACED INTO THE COVER ZONE.

11.3 NO UNDESIRABLE CHANGES OR EMBEZZLEMENT OF BARS OTHER THAN THOSE SHOWN ON THE STRUCTURAL DRAWINGS SHALL BE MADE WITHOUT THE APPROVAL OF THE STRUCTURAL CONSULTANT.

11.4 SERVICE CONDUITS IN THE SLABS ARE TO BE PLACED IN THE MIDDLE THIRD OF THE SLAB.

11.5 TEMPLATES SHALL BE USED TO CORRECTLY LOCATE AND HOLD IN POSITION ALL CAST-IN BOLTS DURING PLACEMENT OF CONCRETE.

11.6 ALL POST-INSTALLED BEARINGS AND ANCHORS SHALL BE TIED TO THE STRUCTURAL ELEMENTS, i.e. COLUMNS, BEAMS, FOUNDATIONS, SHEARWALLS SHALL BE TIED TO THE STRUCTURAL ELEMENTS AND REINFORCED WITH EPOXY OR APPROVED EQUAL.

12.0 NON-STRUCTURAL ELEMENTS:

12.1 ALL NON-STRUCTURAL ELEMENTS SHALL BE DETAIL AS SHOWN IN THE PLANS.

12.2 DESIGN SHALL CONFORM TO IBC 2015, VOL. 1, 7TH EDITION, SECTION 2003.

13.0 LATERAL LOADS

13.1 DESIGN SHALL CONFORM TO IBC 2015, VOL. 1, 7TH EDITION, SECTION 2003.

13.2 DESIGN SHALL CONFORM TO IBC 2015, VOL. 1, 7TH EDITION, SECTION 2003.

13.3 DESIGN SHALL CONFORM TO IBC 2015, VOL. 1, 7TH EDITION, SECTION 2003.

13.4 DESIGN SHALL CONFORM TO IBC 2015, VOL. 1, 7TH EDITION, SECTION 2003.

13.5 DESIGN SHALL CONFORM TO IBC 2015, VOL. 1, 7TH EDITION, SECTION 2003.

13.6 DESIGN SHALL CONFORM TO IBC 2015, VOL. 1, 7TH EDITION, SECTION 2003.

13.7 DESIGN SHALL CONFORM TO IBC 2015, VOL. 1, 7TH EDITION, SECTION 2003.

13.8 DESIGN SHALL CONFORM TO IBC 2015, VOL. 1, 7TH EDITION, SECTION 2003.

13.9 DESIGN SHALL CONFORM TO IBC 2015, VOL. 1, 7TH EDITION, SECTION 2003.

13.10 DESIGN SHALL CONFORM TO IBC 2015, VOL. 1, 7TH EDITION, SECTION 2003.

13.11 DESIGN SHALL CONFORM TO IBC 2015, VOL. 1, 7TH EDITION, SECTION 2003.

13.12 DESIGN SHALL CONFORM TO IBC 2015, VOL. 1, 7TH EDITION, SECTION 2003.

13.13 DESIGN SHALL CONFORM TO IBC 2015, VOL. 1, 7TH EDITION, SECTION 2003.

13.14 DESIGN SHALL CONFORM TO IBC 2015, VOL. 1, 7TH EDITION, SECTION 2003.

13.15 DESIGN SHALL CONFORM TO IBC 2015, VOL. 1, 7TH EDITION, SECTION 2003.

13.16 DESIGN SHALL CONFORM TO IBC 2015, VOL. 1, 7TH EDITION, SECTION 2003.

13.17 DESIGN SHALL CONFORM TO IBC 2015, VOL. 1, 7TH EDITION, SECTION 2003.

13.18 DESIGN SHALL CONFORM TO IBC 2015, VOL. 1, 7TH EDITION, SECTION 2003.

13.19 DESIGN SHALL CONFORM TO IBC 2015, VOL. 1, 7TH EDITION, SECTION 2003.

13.20 DESIGN SHALL CONFORM TO IBC 2015, VOL. 1, 7TH EDITION, SECTION 2003.

14.0 EARTHQUAKE LOAD

14.1 DESIGN SHALL CONFORM TO IBC 2015, VOL. 1, 7TH EDITION, SECTION 2003.

14.2 DESIGN SHALL CONFORM TO IBC 2015, VOL. 1, 7TH EDITION, SECTION 2003.

14.3 DESIGN SHALL CONFORM TO IBC 2015, VOL. 1, 7TH EDITION, SECTION 2003.

14.4 DESIGN SHALL CONFORM TO IBC 2015, VOL. 1, 7TH EDITION, SECTION 2003.

14.5 DESIGN SHALL CONFORM TO IBC 2015, VOL. 1, 7TH EDITION, SECTION 2003.

14.6 DESIGN SHALL CONFORM TO IBC 2015, VOL. 1, 7TH EDITION, SECTION 2003.

14.7 DESIGN SHALL CONFORM TO IBC 2015, VOL. 1, 7TH EDITION, SECTION 2003.

14.8 DESIGN SHALL CONFORM TO IBC 2015, VOL. 1, 7TH EDITION, SECTION 2003.

14.9 DESIGN SHALL CONFORM TO IBC 2015, VOL. 1, 7TH EDITION, SECTION 2003.

14.10 DESIGN SHALL CONFORM TO IBC 2015, VOL. 1, 7TH EDITION, SECTION 2003.

14.11 DESIGN SHALL CONFORM TO IBC 2015, VOL. 1, 7TH EDITION, SECTION 2003.

14.12 DESIGN SHALL CONFORM TO IBC 2015, VOL. 1, 7TH EDITION, SECTION 2003.

14.13 DESIGN SHALL CONFORM TO IBC 2015, VOL. 1, 7TH EDITION, SECTION 2003.

14.14 DESIGN SHALL CONFORM TO IBC 2015, VOL. 1, 7TH EDITION, SECTION 2003.

14.15 DESIGN SHALL CONFORM TO IBC 2015, VOL. 1, 7TH EDITION, SECTION 2003.

14.16 DESIGN SHALL CONFORM TO IBC 2015, VOL. 1, 7TH EDITION, SECTION 2003.

14.17 DESIGN SHALL CONFORM TO IBC 2015, VOL. 1, 7TH EDITION, SECTION 2003.

14.18 DESIGN SHALL CONFORM TO IBC 2015, VOL. 1, 7TH EDITION, SECTION 2003.

14.19 DESIGN SHALL CONFORM TO IBC 2015, VOL. 1, 7TH EDITION, SECTION 2003.

14.20 DESIGN SHALL CONFORM TO IBC 2015, VOL. 1, 7TH EDITION, SECTION 2003.

15.0 DESIGN CRITERIA

15.1 DESIGN SHALL CONFORM TO IBC 2015, VOL. 1, 7TH EDITION, SECTION 2003.

15.2 DESIGN SHALL CONFORM TO IBC 2015, VOL. 1, 7TH EDITION, SECTION 2003.

15.3 DESIGN SHALL CONFORM TO IBC 2015, VOL. 1, 7TH EDITION, SECTION 2003.

15.4 DESIGN SHALL CONFORM TO IBC 2015, VOL. 1, 7TH EDITION, SECTION 2003.

15.5 DESIGN SHALL CONFORM TO IBC 2015, VOL. 1, 7TH EDITION, SECTION 2003.

15.6 DESIGN SHALL CONFORM TO IBC 2015, VOL. 1, 7TH EDITION, SECTION 2003.

15.7 DESIGN SHALL CONFORM TO IBC 2015, VOL. 1, 7TH EDITION, SECTION 2003.

15.8 DESIGN SHALL CONFORM TO IBC 2015, VOL. 1, 7TH EDITION, SECTION 2003.

15.9 DESIGN SHALL CONFORM TO IBC 2015, VOL. 1, 7TH EDITION, SECTION 2003.

15.10 DESIGN SHALL CONFORM TO IBC 2015, VOL. 1, 7TH EDITION, SECTION 2003.

15.11 DESIGN SHALL CONFORM TO IBC 2015, VOL. 1, 7TH EDITION, SECTION 2003.

15.12 DESIGN SHALL CONFORM TO IBC 2015, VOL. 1, 7TH EDITION, SECTION 2003.

15.13 DESIGN SHALL CONFORM TO IBC 2015, VOL. 1, 7TH EDITION, SECTION 2003.

15.14 DESIGN SHALL CONFORM TO IBC 2015, VOL. 1, 7TH EDITION, SECTION 2003.

15.15 DESIGN SHALL CONFORM TO IBC 2015, VOL. 1, 7TH EDITION, SECTION 2003.

15.16 DESIGN SHALL CONFORM TO IBC 2015, VOL. 1, 7TH EDITION, SECTION 2003.

15.17 DESIGN SHALL CONFORM TO IBC 2015, VOL. 1, 7TH EDITION, SECTION 2003.

15.18 DESIGN SHALL CONFORM TO IBC 2015, VOL. 1, 7TH EDITION, SECTION 2003.

15.19 DESIGN SHALL CONFORM TO IBC 2015, VOL. 1, 7TH EDITION, SECTION 2003.

15.20 DESIGN SHALL CONFORM TO IBC 2015, VOL. 1, 7TH EDITION, SECTION 2003.

16.0 DESIGN CRITERIA

16.1 DESIGN SHALL CONFORM TO IBC 2015, VOL. 1, 7TH EDITION, SECTION 2003.

16.2 DESIGN SHALL CONFORM TO IBC 2015, VOL. 1, 7TH EDITION, SECTION 2003.

16.3 DESIGN SHALL CONFORM TO IBC 2015, VOL. 1, 7TH EDITION, SECTION 2003.

16.4 DESIGN SHALL CONFORM TO IBC 2015, VOL. 1, 7TH EDITION, SECTION 2003.

16.5 DESIGN SHALL CONFORM TO IBC 2015, VOL. 1, 7TH EDITION, SECTION 2003.

16.6 DESIGN SHALL CONFORM TO IBC 2015, VOL. 1, 7TH EDITION, SECTION 2003.

16.7 DESIGN SHALL CONFORM TO IBC 2015, VOL. 1, 7TH EDITION, SECTION 2003.

16.8 DESIGN SHALL CONFORM TO IBC 2015, VOL. 1, 7TH EDITION, SECTION 2003.

16.9 DESIGN SHALL CONFORM TO IBC 2015, VOL. 1, 7TH EDITION, SECTION 2003.

16.10 DESIGN SHALL CONFORM TO IBC 2015, VOL. 1, 7TH EDITION, SECTION 2003.

16.11 DESIGN SHALL CONFORM TO IBC 2015, VOL. 1, 7TH EDITION, SECTION 2003.

16.12 DESIGN SHALL CONFORM TO IBC 2015, VOL. 1, 7TH EDITION, SECTION 2003.

16.13 DESIGN SHALL CONFORM TO IBC 2015, VOL. 1, 7TH EDITION, SECTION 2003.

16.14 DESIGN SHALL CONFORM TO IBC 2015, VOL. 1, 7TH EDITION, SECTION 2003.

16.15 DESIGN SHALL CONFORM TO IBC 2015, VOL. 1, 7TH EDITION, SECTION 2003.

16.16 DESIGN SHALL CONFORM TO IBC 2015, VOL. 1, 7TH EDITION, SECTION 2003.

16.17 DESIGN SHALL CONFORM TO IBC 2015, VOL. 1, 7TH EDITION, SECTION 2003.

16.18 DESIGN SHALL CONFORM TO IBC 2015, VOL. 1, 7TH EDITION, SECTION 2003.

16.19 DESIGN SHALL CONFORM TO IBC 2015, VOL. 1, 7TH EDITION, SECTION 2003.

16.20 DESIGN SHALL CONFORM TO IBC 2015, VOL. 1, 7TH EDITION, SECTION 2003.

FOR PERMIT ONLY	
DATE	RECEIVED PERM
DESIGN	RCO
REVISION	VER/ANA
PROJECT NO.	QUA3318
SHEET NO.	S102
ISSUE/REV	

OWNER	UNIVERSITY OF THE PHILIPPINES CEBU
SHEET CONTENTS	GENERAL NOTES (SHEET 2 OF 2)
PROJECT TITLE/LOCATION	PROPOSED UP CEBU DORMITORY
ADDRESS	SUP CAMPUS - SOUTH ROAD HIGHWAY, CEBU CITY

DATE	21/07/22
PROJECT NO.	20-24-RE-2024
ISSUE/REV	001/001
PROJECT TITLE/LOCATION	PROPOSED UP CEBU DORMITORY
ADDRESS	SUP CAMPUS - SOUTH ROAD HIGHWAY, CEBU CITY

DATE	21/07/22
PROJECT NO.	20-24-RE-2024
ISSUE/REV	001/001
PROJECT TITLE/LOCATION	PROPOSED UP CEBU DORMITORY
ADDRESS	SUP CAMPUS - SOUTH ROAD HIGHWAY, CEBU CITY

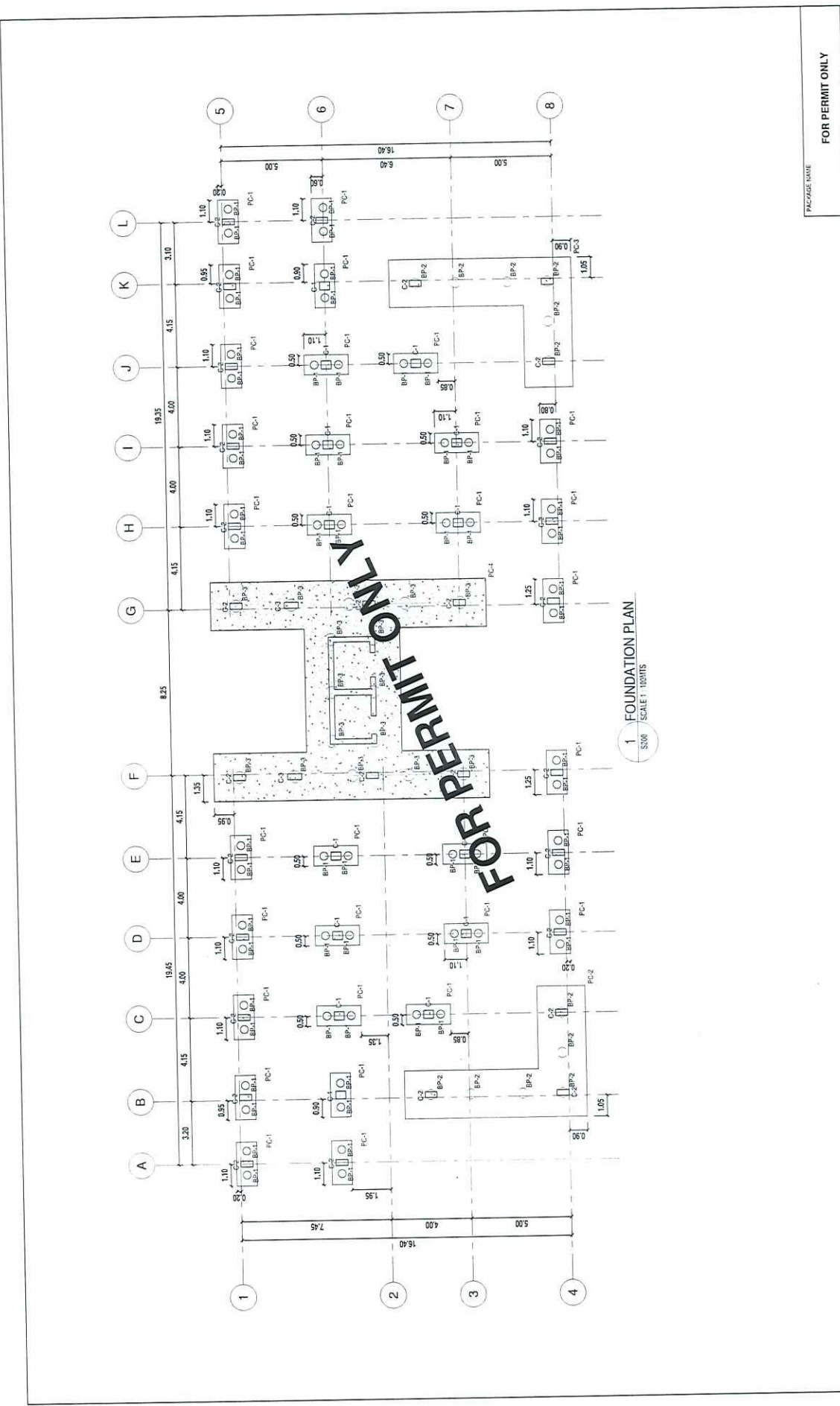
DATE	21/07/22
PROJECT NO.	20-24-RE-2024
ISSUE/REV	001/001
PROJECT TITLE/LOCATION	PROPOSED UP CEBU DORMITORY
ADDRESS	SUP CAMPUS - SOUTH ROAD HIGHWAY, CEBU CITY

DATE	21/07/22
PROJECT NO.	20-24-RE-2024
ISSUE/REV	001/001
PROJECT TITLE/LOCATION	PROPOSED UP CEBU DORMITORY
ADDRESS	SUP CAMPUS - SOUTH ROAD HIGHWAY, CEBU CITY



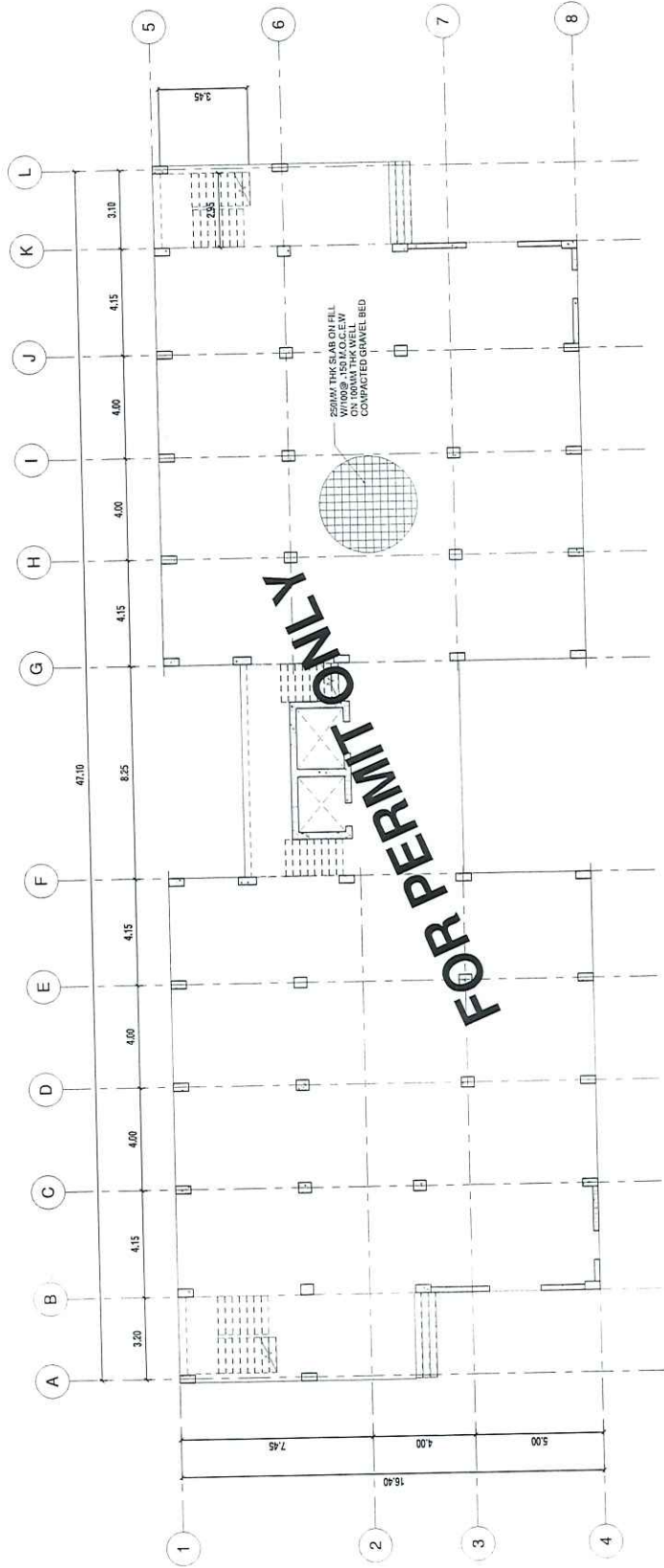
SOURCE: INZABANDRITTER PH

FOR PERMIT ONLY



1 FOUNDATION PLAN
 5000 / SCALE 1:1000MS

PALAFOX <small>ARCHITECTS & ENGINEERS INC.</small> <small>1111 P. O. BOX 3, ANGELES CITY, PANGLOSS, PANGLOSS</small> <small>T: +632 5222254 • +632 752 2131</small> <small>F: +632 5222254 • +632 752 2131</small> <small>WWW.PALAFOXARCHITECTS.COM</small>	ROYLENN D. DELA PAZ <small>STRUCTURAL ENGINEER</small> <small>PRC 0274184 PTR</small> <small>ISSUED ON 29 JUNE 2024</small> <small>ISSUED AT ANGELES CITY</small>	<small>NOTE: DRAWING IS AN INSTRUMENT OF SERVICE, IS AN INTELLECTUAL PROPERTY OF PALAFOX ARCHITECTS & ENGINEERS INC. IT SHALL BE AVAILABLE FOR ANY REVISIONS AND/OR CORRECTIONS ONLY AS PERMITTED BY THE CONTRACT DOCUMENT. FOR USE IN THE PREPARATION OF ANY OTHER DOCUMENT, WITHOUT THE WRITTEN CONSENT OF PALAFOX ARCHITECTS & ENGINEERS INC.</small>	<small>PROJECT TITLE/LOCATION:</small> PROPOSED UP CEBU DORMITORY <small>SIP CAMPUS - SOUTH HORN ROAD, PROSPERITY, CEBU CITY</small> <small>CEBU CITY</small>	<small>OWNER:</small> UNIVERSITY OF THE PHILIPPINES CEBU <small>SHEET CONTENTS:</small> FOUNDATION PLAN AND DETAILS	<small>DATE:</small> <small>DESIGN BY:</small> <small>DRAWN BY:</small> <small>CHECKED BY:</small>	<small>PROJECT NO.:</small> <small>SHEET NO.:</small> <small>RCO</small> <small>VEJANA</small> S200 <small>REPAIR AT</small> <small>ISSUE/REV</small>
	FOR PERMIT ONLY			<small>PACKAGE NAME:</small>		



1 GROUND FLOOR FRAMING PLAN
S300 / SCALE 1:100MMS

PACKAGE NAME		FOR PERMIT ONLY	
DATE	DECSUBMITTED	PROJECT NO.	02A3238
DESIGN	RCO	SHEET NO.	
DRAWN BY	VJE/JVA	NO.	S300
CHECKED		NO. REV.	
DATE		NO. REV.	

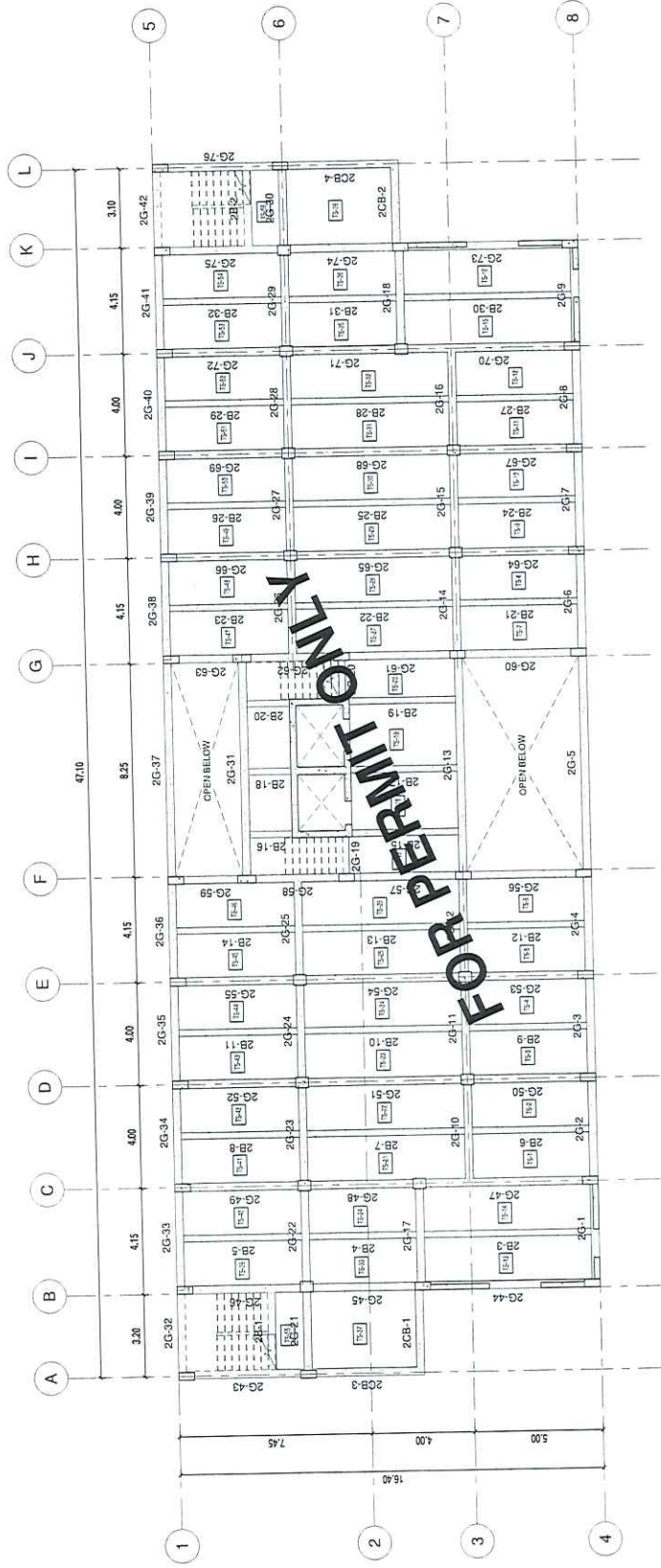
OWNER	UNIVERSITY OF THE PHILIPPINES CEBU
SHEET CONTENTS	GROUND FLOOR FRAMING PLAN

PROJECT TITLE LOCATION	PROPOSED UP CEBU DORMITORY SRP CAMPUS - SOUTH ROAD PROPERTIES, CEBU CITY CEBU CITY
------------------------	----------------------------------------------------------------------------------------------------

NOTE
THE DESIGNER SHALL BE RESPONSIBLE FOR OBTAINING ALL NECESSARY PERMITS AND APPROVALS FROM THE LOCAL GOVERNMENT AND ALL APPLICABLE AGENCIES. THE DESIGNER SHALL BE RESPONSIBLE FOR ANY OTHER PRODUCTS, MATERIALS, AND METHODS OF CONSTRUCTION THAT ARE NOT SPECIFICALLY MENTIONED IN THIS DOCUMENT. THE DESIGNER SHALL BE RESPONSIBLE FOR OBTAINING ALL NECESSARY PERMITS AND APPROVALS FROM THE LOCAL GOVERNMENT AND ALL APPLICABLE AGENCIES.

ROYLENN D. DELA PAZ STRUCTURAL ENGINEER	
PRC	0071642 / PRC
TIN	159 332 353 / BSED ON
	ANASILEE, CITY

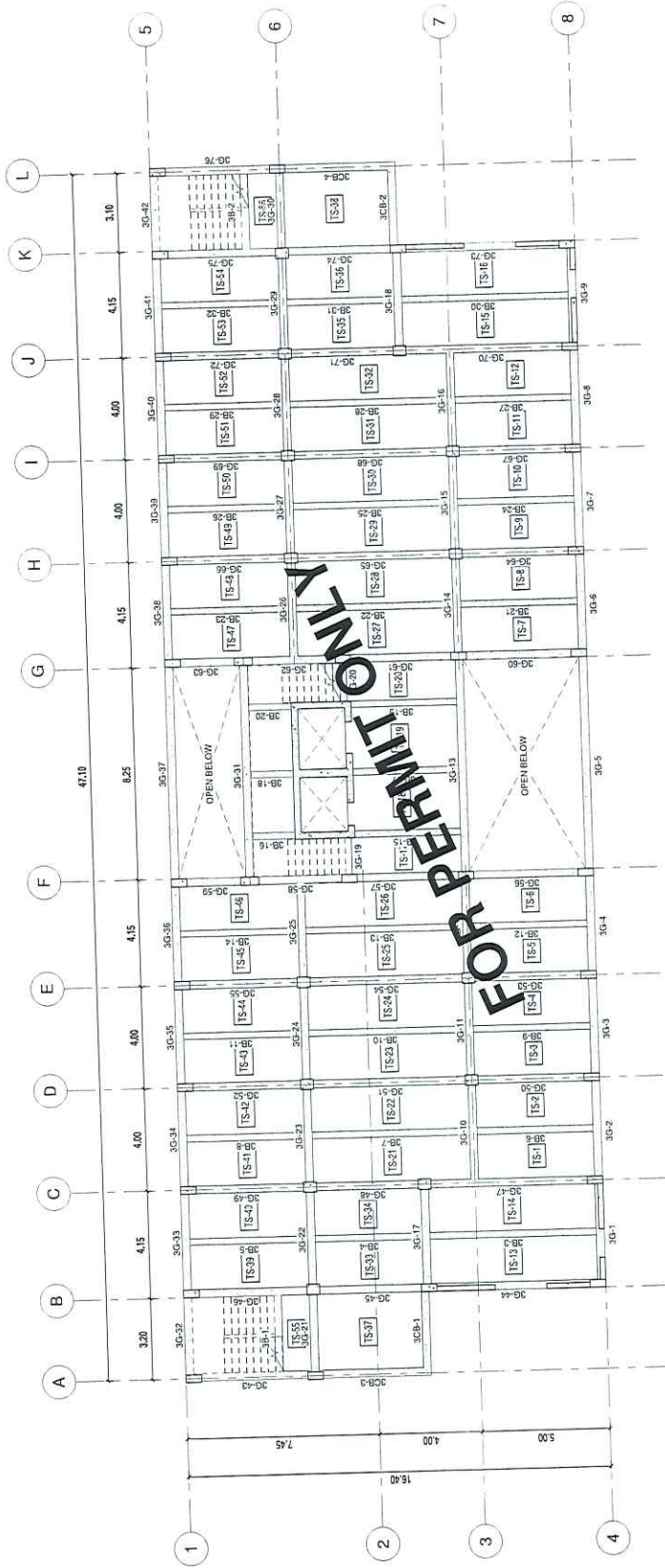
Address: 647020 Corporate Center
Mandaluyong City, Philippines
PALAFOX
1 - 020174 2248 8500
1 - 020174 2248 8500
1 - 020174 2248 8500
www.palafox.com.ph



1 SECOND FLOOR FRAMING PLAN
 S301 SCALE 1:100MMS

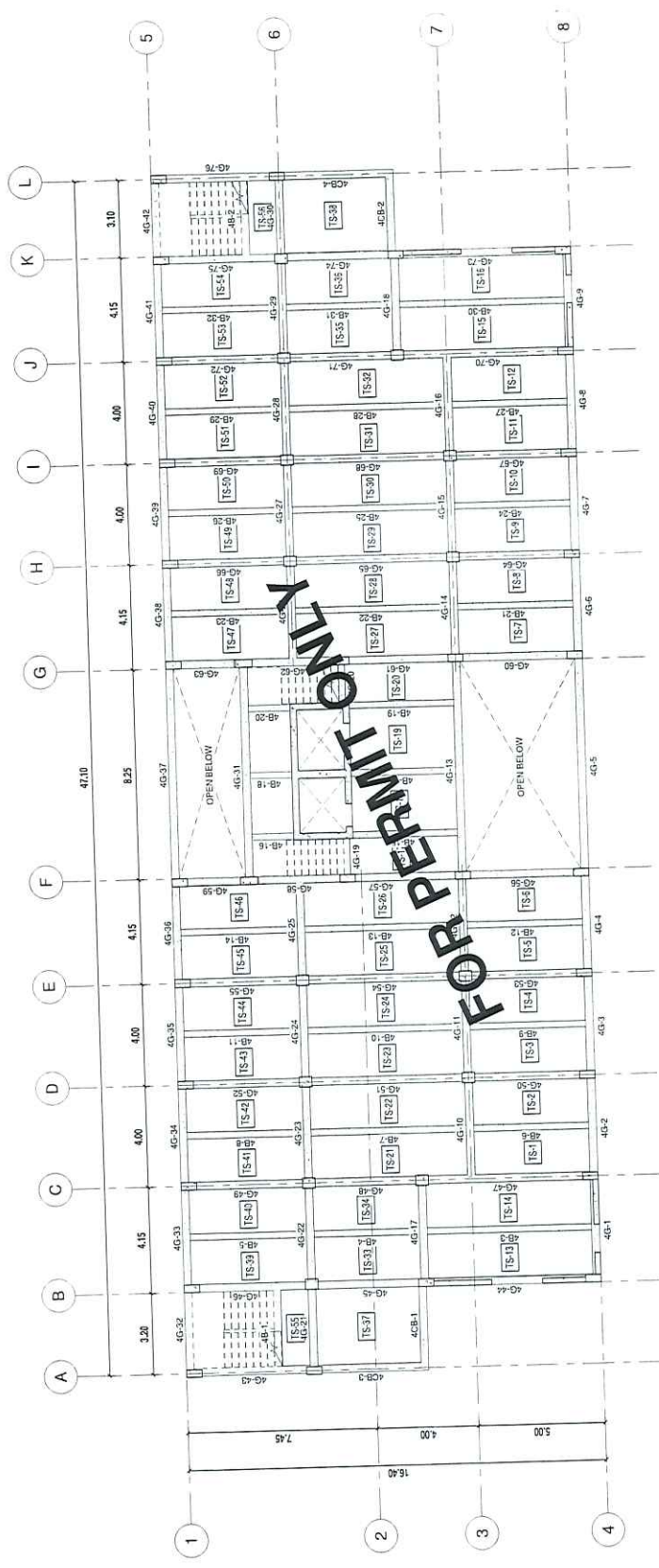
FOR PERMIT ONLY PACKAGE NAME DATE: DECEMBER 2024 PROJECT NO.: 02432018 SHEET NO.: DESIGN: RCO DRAWN BY: VIE/JAA CHECKED BY: RJP/DEL DATE: S301 SHEET NO.:		OWNER: UNIVERSITY OF THE PHILIPPINES CEBU SHEET CONTENTS: 2ND FLOOR FRAMING PLAN	
		PROJECT TITLE/LOCATION: PROPOSED UP CEBU DORMITORY 51P CAMPUS - SOUTH ROAD PROPERTIES, CEBU CITY CEBU CITY	
ENGINEER: ROYLENN D. DELA PAZ STRUCTURAL ENGINEER PRC: 070434 PTA: 210712 TIN: 192322333 REGISTERED: 20 JUNE 2021 REGISTERED CITY: ANGELES CITY		NOTE: THIS IS AN INSTRUMENT OF SERVICE. IT IS AN INTELLECTUAL PROPERTY OF PALAFOX ASSOCIATES INC. AND SHALL BE KEPT IN CONFIDENCE. IT IS NOT TO BE REPRODUCED OR TRANSMITTED IN ANY FORM OR BY ANY MEANS, ELECTRONIC OR MECHANICAL, INCLUDING PHOTOCOPYING, RECORDING, OR BY ANY INFORMATION STORAGE AND RETRIEVAL SYSTEM, WITHOUT THE WRITTEN CONSENT OF PALAFOX ASSOCIATES.	
ADDRESS: SUTUPAN, CEBU CITY, CEBU, PHILIPPINES 1 - 090710 22 245 5000 (OFFICE) 1 - 090710 22 245 5000 (RESIDENTIAL) 1 - 090710 22 245 5000 (RESIDENTIAL) www.palafox.com.ph		REFERENCE:	

PALAFOX



1 THIRD FLOOR FRAMING PLAN
 S302 SCALE 1:100MMS

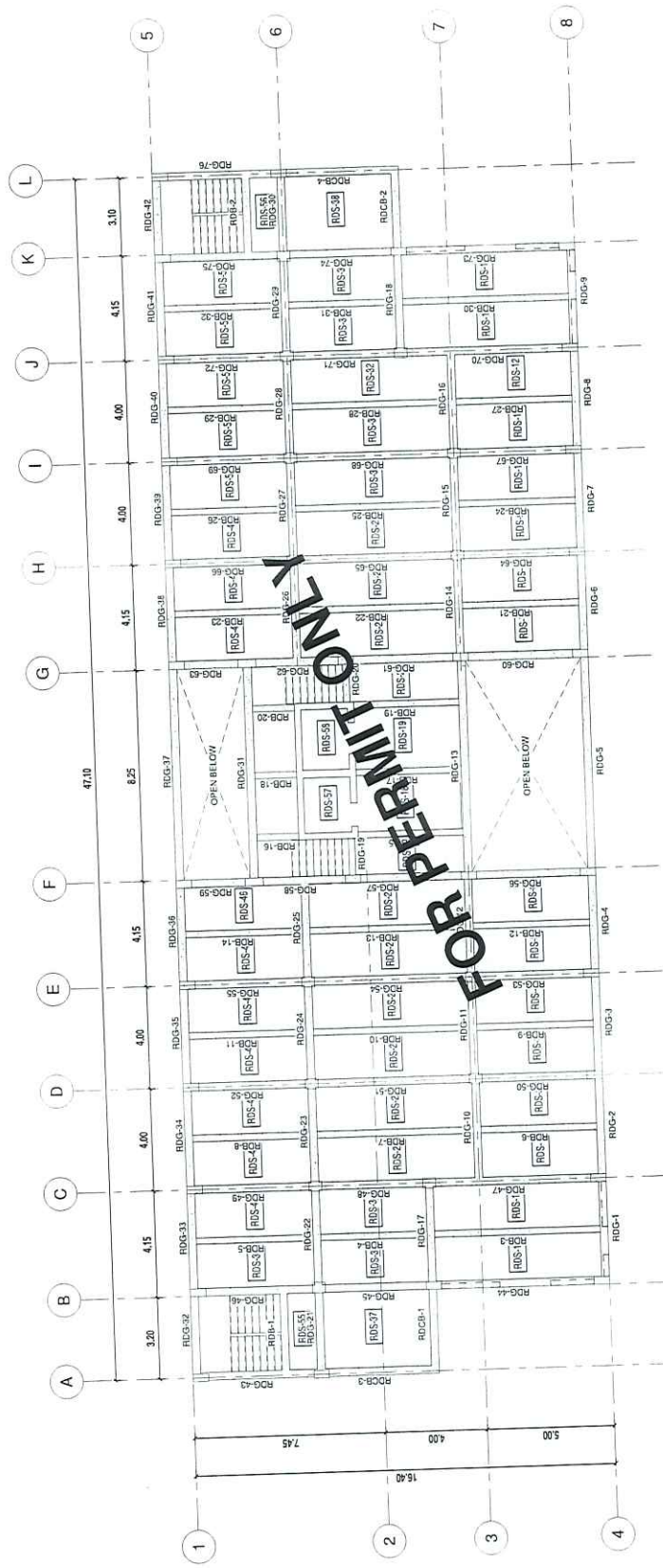
PALAFIX <small>ARCHITECTS INCORPORATED</small> <small>1405 S. GARDEN AVENUE, SUITE 200, ANAHEIM, CA 92805</small> <small>TEL: (714) 222-2222 FAX: (714) 222-2222</small> <small>WWW.PALAFIXARCHITECTS.COM</small>	ROYLENN D. DELA PAZ <small>STRUCTURAL ENGINEER</small> <small>214782</small> <small>07/18/14 P/E</small> <small>20 JUNE 2014</small> <small>122-352-353</small> <small>ISSUED ON</small> <small>ISSUED AT</small> <small>ANGELLES CITY</small>	<small>NOTE:</small> <small>THE DRAWING IS AN INSTRUMENT OF SERVICE, IN AN</small> <small>INTELLECTUAL PROPERTY FOR WHICH I AM AWARE I</small> <small>EXISTED OR WILL BE CREATED IN THE FUTURE. I</small> <small>HEREBY WARRANT THAT I AM THE AUTHOR OF THE</small> <small>DRAWING AND I HAVE THE RIGHT TO MAKE COPIES OF THE</small> <small>DRAWING FOR MYSELF AND TO MAKE COPIES OF THE</small> <small>DRAWING FOR THE PROJECTED PARTY WHOSE</small> <small>WORK I AM PROVIDING. I WILL NOT BE RESPONSIBLE</small> <small>FOR THE WORK WITHOUT THE WRITTEN CONSENT OF PALAFIX</small> <small>ASSOCIATE</small> <small>REGISTERED PROFESSIONAL ENGINEER</small>	<small>PROJECT TITLE/LOCATION</small> PROPOSED UP CEBU DORMITORY <small>SRP CAMALUS - SOUTHROAD PROPERTIES, CEBU CITY</small> <small>CEBU CITY</small>	<small>OWNER</small> UNIVERSITY OF THE PHILIPPINES CEBU <small>SHEET CONTENTS</small> 3RD FLOOR FRAMING PLAN	<small>PACKAGE NAME</small> FOR PERMIT ONLY
	<small>DATE</small> DECEMBER 2024 <small>DESIGN</small> RENTILAD <small>DRAWN BY</small> RENTILAD <small>CHECKED BY</small> RENTILAD <small>DATE</small> DECEMBER 2024 <small>PROJECT NO.</small> S302 <small>ISSUE/REV</small>				



FOR PERMIT ONLY

1 FOURTH FLOOR FRAMING PLAN
SCALE 1:100MMS

FOR PERMIT ONLY	
PACKAGE NAME DATE DESIGN DRAWN BY REVISION DATE CHECKED BY	PROJECT NO. 6242018 SHEET NO. NO. VUE/VA RCP/AE RSL/RE/RY
UNIVERSITY OF THE PHILIPPINES CEBU	
SHEET CONTENTS	
PROPOSED UP CEBU DORMITORY 5th CAMPUS - SOUTH INLAND PROPERTIES, CEBU CITY CEBU CITY	
PROJECT TITLE LOCATION	
WFE THIS IS AN INSTRUMENT OF SERVICE, IS AN INTELLECTUAL PROPERTY OF PALAFOX ASSOCIATES INC. AND IS NOT TO BE REPRODUCED OR TRANSMITTED IN ANY FORM OR BY ANY MEANS, ELECTRONIC OR MECHANICAL, INCLUDING PHOTOCOPYING, RECORDING, OR BY ANY INFORMATION STORAGE AND RETRIEVAL SYSTEM, WITHOUT THE WRITTEN CONSENT OF PALAFOX ASSOCIATES.	
ROYLENN D. DELA PAZ STRUCTURAL ENGINEER REG. NO. 159392-2011 ISSUED ON 20.04.2024 ISSUED AT PASIG CITY	
PALAFOX ARCHITECTURAL ENGINEERING & CONSTRUCTION 1105 SOUTH BAYVIEW PASIG CITY, PASIG CITY TEL: 02-8222-1111 FAX: 02-8222-1111 WWW.PALAFOXPH.COM	



1 ROOF DECK
S34 SCALE: 1/8"=1'-0"

PACKAGE NAME		FOR PERMIT ONLY	
DATE	DESIGN	PROJECT NO.	SHEET NO.
REVISION	REVISION	0243333	
DRAWN BY	VIEW/SCALE		S304
REVISION	DATE		

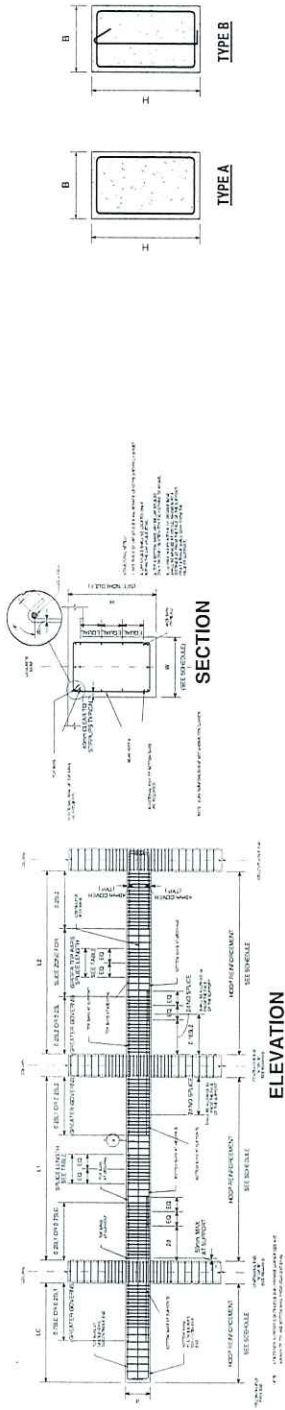
OWNER	UNIVERSITY OF THE PHILIPPINES CEBU
SHEET CONTENTS	ROOF DECK FRAMING PLAN

PROJECT TITLE/LOCATION	PROPOSED UP CEBU DORMITORY
OWNER	SUP CAMPUS - SOUTH ROAD PROPERTIES, CEBU CITY CEBU CITY

NOTE: THIS DRAWING IS AN INSTRUMENT OF SERVICE, AS AN INSTRUMENT OF SERVICE, IT IS THE PROPERTY OF PALAFOX ENGINEERING AND ARCHITECTURE, INC. AND IS NOT TO BE REPRODUCED, COPIED, OR TRANSMITTED IN ANY FORM OR BY ANY MEANS, WITHOUT THE WRITTEN CONSENT OF PALAFOX ENGINEERING AND ARCHITECTURE, INC.

ROYLENN D. DELA PAZ	REGISTERED PROFESSIONAL ENGINEER	2147872	20 JUNE 2014
STRUCTURAL ENGINEER		0074164	REGISTERED
PRC	REGISTERED	123 332 333	REGISTERED
TIN	REGISTERED		REGISTERED

PALAFOX
 ARCHITECTURE AND ENGINEERING
 1 - 402716 22nd Ave. W. #202, San Francisco, CA 94118
 1 - 402716 22nd Ave. W. #202, San Francisco, CA 94118
 1 - 402716 22nd Ave. W. #202, San Francisco, CA 94118
 www.palafox.com



TYPICAL DUCTILE MOMENT FRAME BEAM DETAIL

MARK	BEAM SECTION (B X H)	BAR DIA.	LEFT FOR "A"						MAIN REINFORCEMENTS						WEB DIA.	STIRRUPS TYPE	STIRRUPS SPACING
			DISCONT			CONT			MIDDLE			RIGHT FOR "B"					
			TOP	BOT	CONT	TOP	BOT	CONT	TOP	BOT	CONT	TOP	BOT	CONT			
TG-1	250 X 500 mm	16	3	3	3	3	3	3	3	3	3	3	3	3	B	@150, 2@100, REST @150 TO C.L.	
TG-2	250 X 500 mm	16	-	-	3	3	3	3	3	3	3	3	3	3	B	@150, 2@100, REST @150 TO C.L.	
TG-3	250 X 500 mm	16	-	-	3	3	3	3	3	3	3	3	3	3	B	@150, 2@100, REST @150 TO C.L.	
TG-4	250 X 500 mm	16	-	-	3	3	3	3	3	3	3	3	3	3	B	@150, 2@100, REST @150 TO C.L.	
TG-5	250 X 500 mm	16	-	-	3	3	3	3	3	3	3	3	3	3	B	@150, 2@100, REST @150 TO C.L.	
TG-6	250 X 500 mm	16	-	-	3	3	3	3	3	3	3	3	3	3	B	@150, 2@100, REST @150 TO C.L.	
TG-7	250 X 500 mm	16	-	-	3	3	3	3	3	3	3	3	3	3	B	@150, 2@100, REST @150 TO C.L.	
TG-8	250 X 500 mm	16	-	-	3	3	3	3	3	3	3	3	3	3	B	@150, 2@100, REST @150 TO C.L.	
TG-9	250 X 500 mm	16	-	-	3	3	3	3	3	3	3	3	3	3	B	@150, 2@100, REST @150 TO C.L.	
TG-10	250 X 500 mm	16	3	3	3	3	3	3	3	3	3	3	3	3	B	@150, 2@100, REST @150 TO C.L.	
TG-11	250 X 500 mm	16	-	-	3	3	3	3	3	3	3	3	3	3	B	@150, 2@100, REST @150 TO C.L.	
TG-12	250 X 500 mm	16	-	-	3	3	3	3	3	3	3	3	3	3	B	@150, 2@100, REST @150 TO C.L.	
TG-13	250 X 500 mm	16	-	-	3	3	3	3	3	3	3	3	3	3	B	@150, 2@100, REST @150 TO C.L.	
TG-14	250 X 500 mm	16	-	-	3	3	3	3	3	3	3	3	3	3	B	@150, 2@100, REST @150 TO C.L.	
TG-15	250 X 500 mm	16	-	-	3	3	3	3	3	3	3	3	3	3	B	@150, 2@100, REST @150 TO C.L.	
TG-16	250 X 500 mm	16	-	-	3	3	3	3	3	3	3	3	3	3	B	@150, 2@100, REST @150 TO C.L.	
TG-17	250 X 500 mm	16	-	-	3	3	3	3	3	3	3	3	3	3	B	@150, 2@100, REST @150 TO C.L.	
TG-18	250 X 500 mm	16	3	3	3	3	3	3	3	3	3	3	3	3	B	@150, 2@100, REST @150 TO C.L.	
TG-19	300 X 400 mm	16	3	3	3	3	3	3	3	3	3	3	3	3	B	@150, 2@100, REST @150 TO C.L.	
TG-20	250 X 500 mm	16	3	3	3	3	3	3	3	3	3	3	3	3	B	@150, 2@100, REST @150 TO C.L.	
TG-21	250 X 500 mm	16	3	3	3	3	3	3	3	3	3	3	3	3	B	@150, 2@100, REST @150 TO C.L.	
TG-22	250 X 500 mm	16	-	-	3	3	3	3	3	3	3	3	3	3	B	@150, 2@100, REST @150 TO C.L.	
TG-23	250 X 500 mm	16	-	-	3	3	3	3	3	3	3	3	3	3	B	@150, 2@100, REST @150 TO C.L.	
TG-24	250 X 500 mm	16	-	-	3	3	3	3	3	3	3	3	3	3	B	@150, 2@100, REST @150 TO C.L.	
TG-25	250 X 500 mm	16	-	-	3	3	3	3	3	3	3	3	3	3	B	@150, 2@100, REST @150 TO C.L.	
TG-26	250 X 500 mm	16	3	3	3	3	3	3	3	3	3	3	3	3	B	@150, 2@100, REST @150 TO C.L.	
TG-27	250 X 500 mm	16	-	-	3	3	3	3	3	3	3	3	3	3	B	@150, 2@100, REST @150 TO C.L.	
TG-28	250 X 500 mm	16	-	-	3	3	3	3	3	3	3	3	3	3	B	@150, 2@100, REST @150 TO C.L.	
TG-29	250 X 500 mm	16	-	-	3	3	3	3	3	3	3	3	3	3	B	@150, 2@100, REST @150 TO C.L.	
TG-30	250 X 500 mm	16	-	-	3	3	3	3	3	3	3	3	3	3	B	@150, 2@100, REST @150 TO C.L.	
TG-31	250 X 500 mm	16	3	3	3	3	3	3	3	3	3	3	3	3	B	@150, 2@100, REST @150 TO C.L.	
TG-32	250 X 500 mm	16	3	3	3	3	3	3	3	3	3	3	3	3	B	@150, 2@100, REST @150 TO C.L.	
TG-33	250 X 500 mm	16	-	-	3	3	3	3	3	3	3	3	3	3	B	@150, 2@100, REST @150 TO C.L.	
TG-34	250 X 500 mm	16	-	-	3	3	3	3	3	3	3	3	3	3	B	@150, 2@100, REST @150 TO C.L.	
TG-35	250 X 500 mm	16	-	-	3	3	3	3	3	3	3	3	3	3	B	@150, 2@100, REST @150 TO C.L.	
TG-36	250 X 500 mm	16	-	-	3	3	3	3	3	3	3	3	3	3	B	@150, 2@100, REST @150 TO C.L.	
TG-37	250 X 500 mm	16	-	-	3	3	3	3	3	3	3	3	3	3	B	@150, 2@100, REST @150 TO C.L.	

FOR PERMIT ONLY

NOTE: TYPICAL GIRDER SCHEDULE FOR 2ND FLOOR TO ROOF DECK

PALAFIX

Architectural & Structural Engineering Firm
 1 - 3501/3712/3815/3816/3817/3818/3819/3820/3821/3822/3823
 1 - 2501/2511/2521/2531/2541/2551/2561/2571/2581/2591/2601
 1 - 4001/4011/4021/4031/4041/4051/4061/4071/4081/4091/4101

ROYLENN D. DELA PAZ
STRUCTURAL ENGINEER

PIC: 0071164 PIR: 214292
 TIN: 123-232-333 ISSUED ON: 23-JUNE-2024
 ISSUED AT: ANGELES CITY

PROJECT TITLE/LOCATION: **PROPOSED UP CEBU DORMITORY**
 SPP CAMPUS - SOUTH ROAD PHOENIXES, CEBU CITY

OWNER: **UNIVERSITY OF THE PHILIPPINES CEBU**

SHEET CONTENTS: **GIRDER SCHEDULE**

DATE: **DECEMBER 2024**

DESIGN: **RCD**

DRAWN BY: **RETRICAD**

CHECK: **OK/OC**

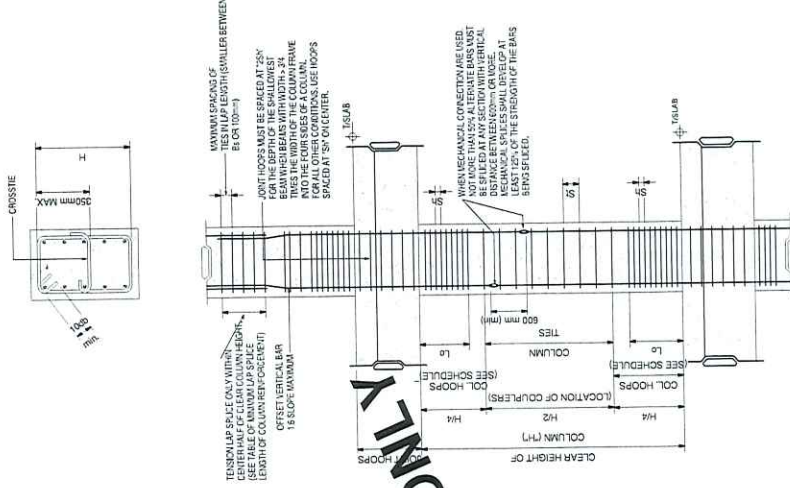
PROJECT NO.: **042024**

SHEET NO.: **S400A**

SCALE: **AS SHOWN**

FOR PERMIT ONLY

SCHEDULE OF COLUMNS		C-1	C-2	C-3
FLOOR LEVEL	COLUMN TYPE			
TOP OF FILE CAPS TO ROOF DECK				
VERTICAL BARS		16-25mm	8-25mm	8-25mm
JOINT REINFORCEMENT		16mm @ 100mm	16mm @ 70mm	16mm @ 70mm
COE REINFORCEMENT		16mm @ 100mm	16mm @ 70mm	16mm @ 70mm
TIES REINFORCEMENT		16mm @ 100mm	16mm @ 100mm	16mm @ 100mm
HARD STRATA TO BOTTOM OF FILE CAPS				
VERTICAL BARS				
JOINT REINFORCEMENT				
COE REINFORCEMENT				
TIES REINFORCEMENT				



- COUPLERS MUST BE LOCATED WITHIN THE MIDDLE HALF OF THE COLUMN.
- SCREW TEST RESULTS OF COUPLERS FOR EXISTING APPROVAL SHALL BE SUBMITTED FOR EACH SIZE OF REBAR MUST BE TESTED FOR TENSILE STRENGTH TEST.
- SCREW AND COUPLERS EMPLOYED CANNOT EXCEED 60% OF 100%.
- SCREW AND COUPLERS EMPLOYED CANNOT EXCEED 60% OF 100%.
- SCREW AND COUPLERS EMPLOYED CANNOT EXCEED 60% OF 100%.
- SCREW AND COUPLERS EMPLOYED CANNOT EXCEED 60% OF 100%.
- SCREW AND COUPLERS EMPLOYED CANNOT EXCEED 60% OF 100%.
- SCREW AND COUPLERS EMPLOYED CANNOT EXCEED 60% OF 100%.
- SCREW AND COUPLERS EMPLOYED CANNOT EXCEED 60% OF 100%.
- SCREW AND COUPLERS EMPLOYED CANNOT EXCEED 60% OF 100%.

1 COLUMN SCHEDULE
SCALE: 1/200

TYPICAL MOMENT FRAME

FOR PERMIT ONLY	
DATE	DECEMBER 2024
DESIGN	PCO
DRAWN BY	VERJMA
CHECKED BY	RIJPAEL
PROJECT NO.	020333
SHEET NO.	S402

UNIVERSITY OF THE PHILIPPINES CEBU
SHEET CONTENTS
COLUMN SCHEDULE

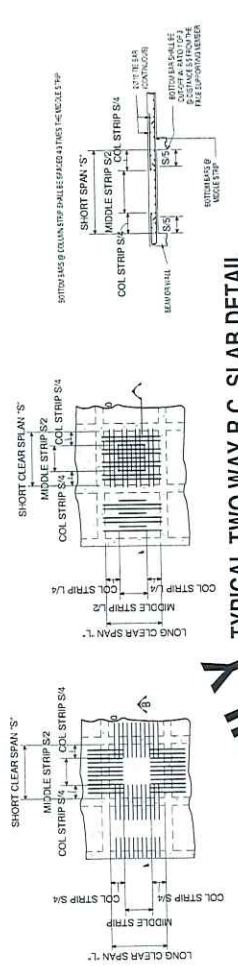
PROPOSED
UP CEBU DORMITORY
SUP-CAMPUS - SOUTH HEMISPHERES, CEBU CITY
CEBU CITY

USE THIS DRAWING AS AN INSTRUMENT OF SERVICE IN AN INTEGRATED PROJECT FOR WHICH IT IS MADE. THE CONTRACTOR SHALL BE RESPONSIBLE FOR THE DESIGN AND CONSTRUCTION OF THE WORK SHOWN HEREIN. THE CONTRACTOR SHALL BE RESPONSIBLE FOR THE DESIGN AND CONSTRUCTION OF THE WORK SHOWN HEREIN. THE CONTRACTOR SHALL BE RESPONSIBLE FOR THE DESIGN AND CONSTRUCTION OF THE WORK SHOWN HEREIN.

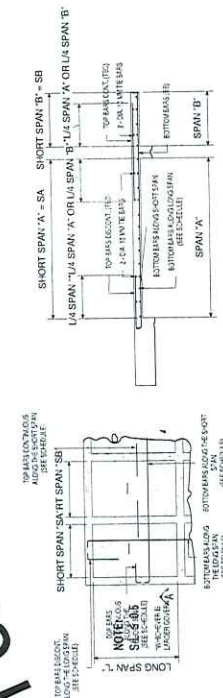
ROYLENN D. DELA PAZ	REGISTERED PROFESSIONAL ENGINEER
PRC	027434 PTR
TR	120 JUNE 2024
	AVILES CITY

PALAFIX
 ANTELOPE PROJECT CONSULTING CORP.
 11th Floor, 11017 J. P. Laurel Blvd.,
 Alabang, Muntinlupa City, Philippines
 P. +632 8222 2224 | F. +632 8222 2223
 E. info@palafix.com | www.palafix.com

Mark	Thick	Bar Dia	Short Span		Long Span		Count	Remarks
			Discont	Midspan	Discont	Midspan		
TS-1	100	10	300	275	300	175	300	A
TS-2	100	10	275	275	250	250	250	A
TS-3	100	10	275	275	250	250	250	A
TS-4	100	10	275	275	250	250	250	A
TS-5	100	10	275	275	250	250	250	A
TS-6	100	10	275	275	250	250	250	A
TS-7	100	10	275	275	250	250	250	A
TS-8	100	10	275	275	250	250	250	A
TS-9	100	10	275	275	250	250	250	A
TS-10	100	10	275	275	250	250	250	A
TS-11	100	10	275	275	250	250	250	A
TS-12	100	10	275	275	250	250	250	A
TS-13	100	10	275	275	250	250	250	A
TS-14	100	10	275	275	250	250	250	A
TS-15	100	10	300	275	300	300	300	A
TS-16	100	10	300	275	300	300	300	A
TS-17	100	10	275	225	250	250	250	A
TS-18	100	10	275	175	195	150	250	A
TS-19	100	10	275	275	250	250	250	A
TS-20	100	10	-	275	275	275	250	A
TS-21	100	10	-	275	275	275	250	A
TS-22	100	10	-	275	275	275	250	A
TS-23	100	10	-	275	275	275	250	A
TS-24	100	10	-	275	275	275	250	A
TS-25	100	10	-	275	275	275	250	A
TS-26	100	10	-	275	275	275	250	A
TS-27	100	10	-	275	275	275	250	A
TS-28	100	10	-	275	275	275	250	A
TS-29	100	10	-	275	275	275	250	A
TS-30	100	10	-	275	275	275	250	A
TS-31	100	10	-	275	275	275	250	A
TS-32	100	10	-	275	275	275	250	A
TS-33	100	10	-	275	275	275	250	A
TS-34	100	10	-	275	275	275	250	A
TS-35	100	10	-	275	275	275	250	A
TS-36	100	10	-	275	275	275	250	A
TS-37	100	10	200	150	200	125	200	B
TS-38	100	10	275	275	275	275	250	A
TS-39	100	10	275	275	275	275	250	A
TS-40	100	10	275	275	275	275	250	A
TS-41	100	10	275	275	275	275	250	A
TS-42	100	10	300	275	300	300	300	A
TS-43	100	10	275	275	275	275	250	A
TS-44	100	10	275	275	275	275	250	A
TS-45	100	10	275	275	275	275	250	A
TS-46	100	10	275	275	275	275	250	A
TS-47	100	10	275	275	275	275	250	A
TS-48	100	10	275	275	275	275	250	A
TS-49	100	10	275	275	275	275	250	A
TS-50	100	10	275	275	275	275	250	A
TS-51	100	10	275	275	275	275	250	A
TS-52	100	10	275	275	275	275	250	A
TS-53	100	10	275	275	275	275	250	A
TS-54	100	10	275	275	275	275	250	A



TYPICAL TWO WAY R.C. SLAB DETAIL



TYPICAL ONE WAY R.C. SLAB DETAIL

FOR PERMIT ONLY

PACKAGE NAME: _____

FOR PERMIT ONLY

PROJECT NO.: 020308

SHEET NO.: _____

DATE: DECEMBER 2021

DESIGN: RCO

REVISION: V01.00A

PROJECT: S403

DATE: _____

DESIGNER: _____

CHECKED: _____

APPROVED: _____

OWNER: UNIVERSITY OF THE PHILIPPINES CEBU

SHEET CONTENTS: SLAB SCHEDULE

PROPOSED: UP CEBU DORMITORY

PROJECT TITLE/LOCATION: 590 CAMPUS - SOUTH HALL PROPERTIES, CEBU CITY

CEBU CITY

PREPARED BY: ROYLENN D. DELA PAZ

STRUCTURAL ENGINEER

DATE: 02/24/24

PROJECT NO.: 240202

DATE: 22 JUNE 2024

PROJECT NO. FOR: ANGELES CITY

THIS DRAWING IS AN INSTRUMENT OF SERVICE, IN AN ATTESTATION OF THE ENGINEER'S PROFESSIONAL RESPONSIBILITY AND LIABILITY. IT IS TO BE USED ONLY FOR THE PROJECT AND SITE SPECIFICALLY IDENTIFIED HEREIN. ANY REUSE OR MODIFICATION OF THIS DRAWING WITHOUT THE WRITTEN CONSENT OF PALAFOX ENGINEERING IS STRICTLY PROHIBITED.

PALAFOX

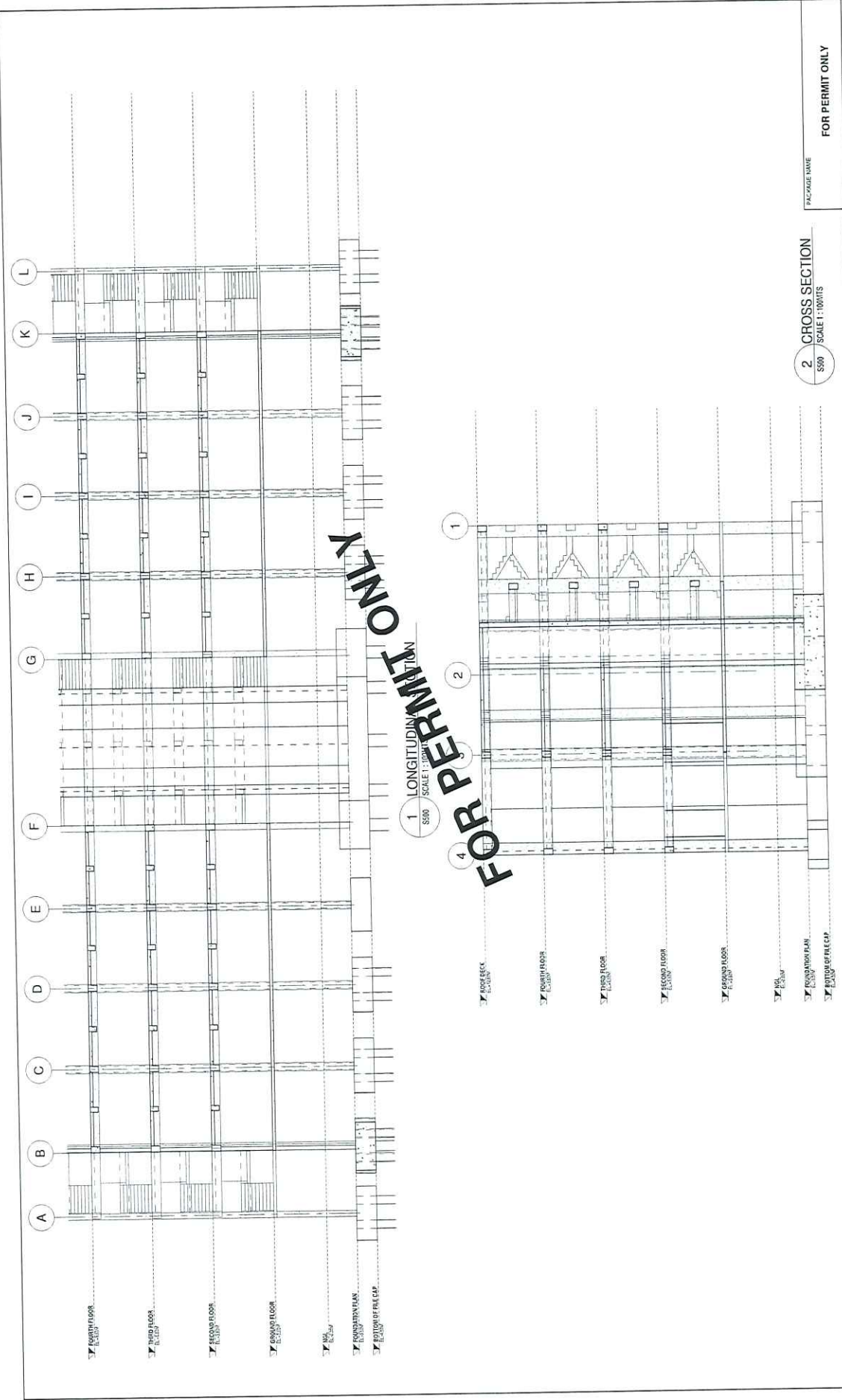
Palafx Engineering Inc.

1100 S. 10th Street, Suite 100

Phoenix, AZ 85001

Phone: (602) 998-8888

Website: www.palafx.com



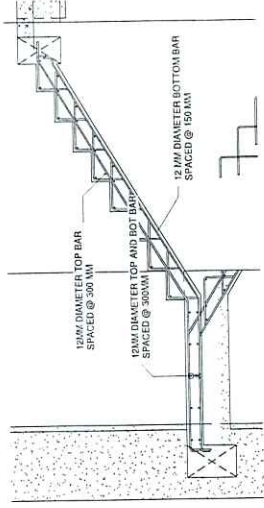
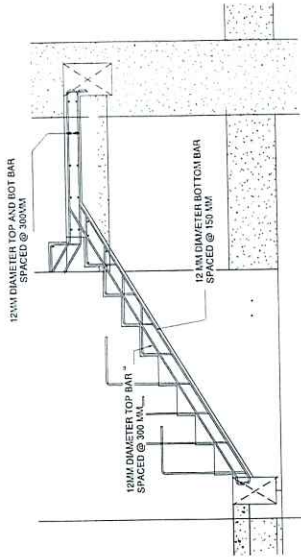
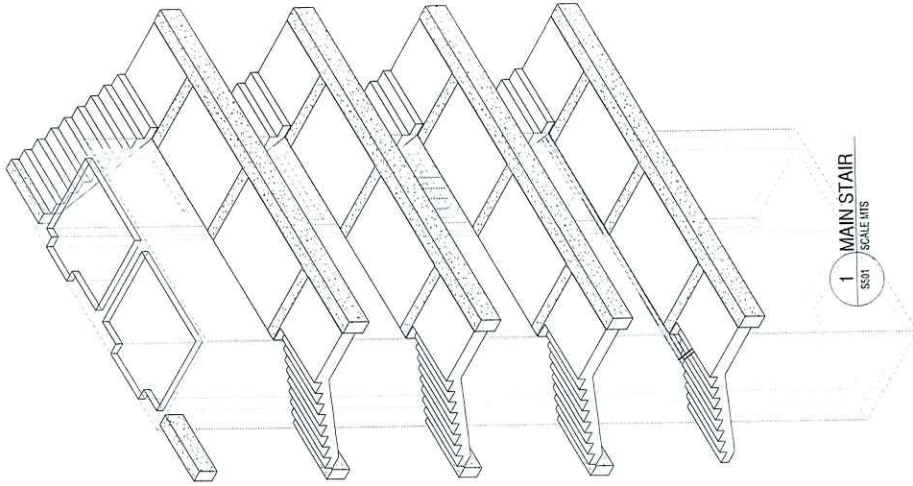
FOR PERMIT ONLY

1 LONGITUDINAL SECTION
SCALE 1/8"=1'-0"

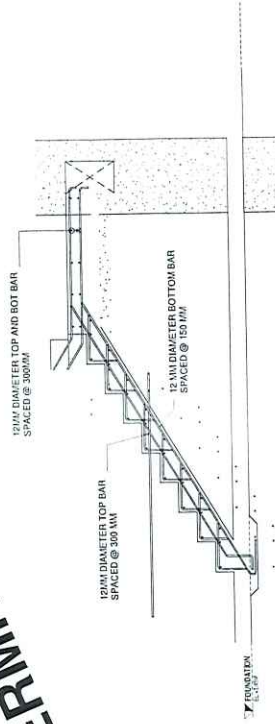
2 CROSS SECTION
SCALE 1/8"=1'-0"

PALAFOX ANTONIO M. PALAFOX & COMPANY, INC. 1000 CALIFORNIA STREET, SUITE 1000 SAN FRANCISCO, CA 94109 TEL: (415) 774-2274 • FAX: (415) 774-2275 WWW.PALAFOXSTRUCTURAL.COM	ROYLENN D. DELA PAZ STRUCTURAL ENGINEER REG. NO. 0074184 PPR 124 332 331 BERKELEY, CA	PROJECT TITLE LOCATION: PROPOSED UP CEBU DORMITORY SPP CAMPUS - SOUTH ROAD PROPERTIES, CEBU CITY CEBU CITY	OWNER: UNIVERSITY OF THE PHILIPPINES CEBU SHEET CONTENTS: SECTION DETAILS	PACKAGE NAME: FOR PERMIT ONLY
	DATE: 29-JUNE-2024 REGION: VISAYAS PROJECT NO.: 0074184 SHEET NO.: S500 DESIGNER: RICO CHECKER: VAGUWA REVISION: R01/4/1	DATE: DECEMBER 2024 PROJECT NO.: 0074184 SHEET NO.: S500	PROJECT NO.: 0074184 SHEET NO.: S500	PROJECT NO.: 0074184 SHEET NO.: S500

WE, THE BOARD OF PROFESSIONAL ENGINEERS, IN AN ATTESTATION OF SERVICE, IN ACCORDANCE WITH THE PROFESSIONAL ENGINEERING ACT OF 1964 (RA 686), DO HEREBY CERTIFY THAT THE DESIGNER HAS COMPLETED THE DESIGN OF THE STRUCTURE AND THAT THE DESIGN IS IN ACCORDANCE WITH THE REQUIREMENTS OF THE PROFESSIONAL ENGINEERING ACT OF 1964 (RA 686) AND THE REGULATIONS THEREUNDER. WE WILL HOLD THE WRITTEN CONTRACT OF PALAFOX RESPONSIBLE.



FOR PERMIT ONLY



Palaflex Engineering Inc.
11th Floor Bldg. 2, J.M. Alvarado St.,
Cebu City, Philippines
Tel: +632 222 2424 | Fax: +632 222 2424
www.palaflex.com.ph

PALAFLEX

ROYLENN D. DELA PAZ
STRUCTURAL ENGINEER

PRC 077184 | PTR
129,302,353 | ISSUED ON 20 JUNE 2024
RESIDED AT AVAILLES CITY

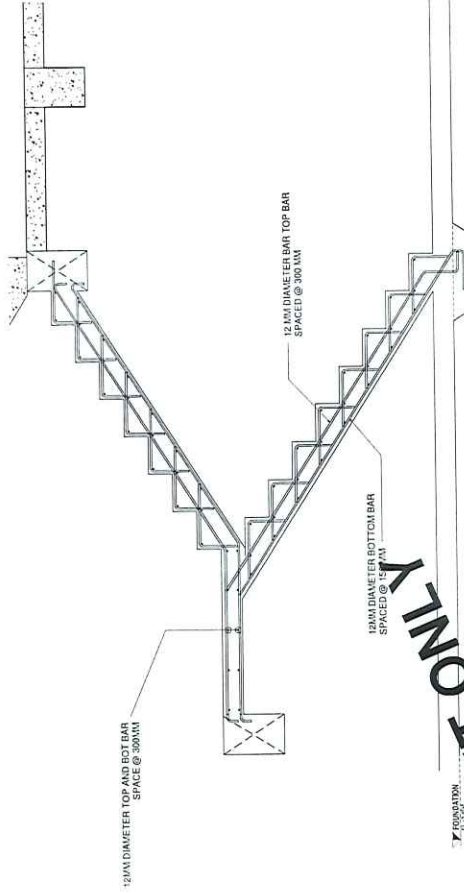
NOTE:
THIS DRAWING IS AN INSTRUMENT OF SERVICE. IT IS THE INTELLECTUAL PROPERTY OF PALAFOX AND SHALL BE KEPT IN CONFIDENTIALITY. IT SHALL BE RETURNED TO THE CLIENT UPON COMPLETION OF THE PROJECT. NO REUSE OR REPRODUCTION OF THIS DOCUMENT IS ALLOWED WITHOUT THE WRITTEN CONSENT OF PALAFOX AND/OR ITS ASSOCIATES. PALAFOX ACT 18M

PROJECT TITLE/LOCATION
PROPOSED UP CEBU DORMITORY
SIP CALVOUS - SOUTH ROAD PROPERTIES, CEBU CITY
CEBU CITY

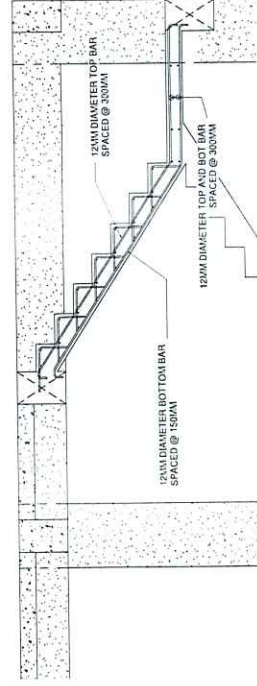
OWNER
UNIVERSITY OF THE PHILIPPINES CEBU

SHEET CONTENTS
MAIN STAIR DETAILS

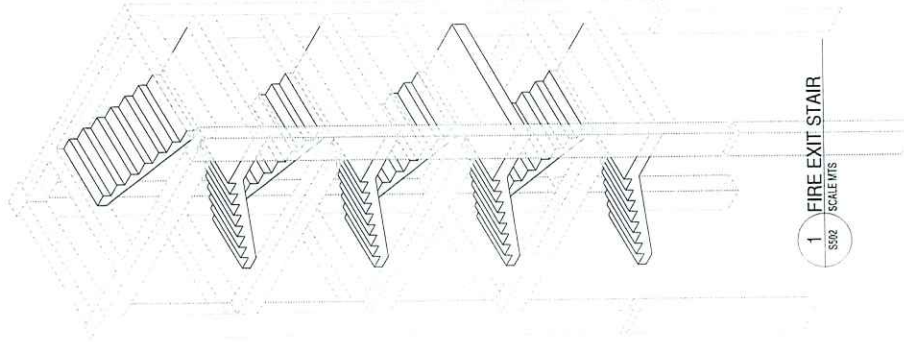
FOR PERMIT ONLY			
PACKAGE NAME	DATE	PROJECT NO.	SHEET NO.
	DECEMBER 2024	0243318	
DESIGN	RCO		
DRAWN BY	VAJUNA		
CHECKED BY	ROPAAL		
DATE			S501



2 FIRE EXIT STAIR SECTION @ GROUND FLOOR TO TYPICAL FLOOR LEVEL
S502 / SCALE 1:20MMS



3 FIRE EXIT STAIR SECTION @ ROOFDECK
S502 / SCALE 1:25MMS



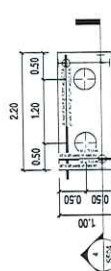
1 FIRE EXIT STAIR
S502 / SCALE MMS

FOR PERMIT ONLY

<p>ANDRE M. PALAFOX & ASSOCIATES, INC. 11000 WILSON BOULEVARD, SUITE 100 DUBLIN, CALIFORNIA 94568 TEL: (925) 835-1100 WWW.PALAFOXENGINEERS.COM</p>	<p>ROYLENN D. DELA PAZ STRUCTURAL ENGINEER 7157192 027414 / PR 128.332.333 / BRUR ON 29-JUNE-2024 ANGELES CITY</p>	<p>PROJECT TITLE LOCATION PROPOSED UP CEBU DORMITORY 90P CAMPUS - SOUTH ROAD PROPERTIES, CEBU CITY CEBU CITY</p>	<p>OWNER UNIVERSITY OF THE PHILIPPINES CEBU</p>	<p>DATE DECEMBER 2023</p>	<p>PACKAGE NAME FOR PERMIT ONLY</p>
	<p>DATE 21-12-2023</p>	<p>PROJECT NO. 0243338</p>	<p>SHEET NO. S502</p>	<p>ISSUED BY RICO</p>	<p>PROJECT NO. 0243338</p>
<p>DATE 21-12-2023</p>	<p>PROJECT NO. 0243338</p>	<p>SHEET NO. S502</p>	<p>ISSUED BY RICO</p>	<p>PROJECT NO. 0243338</p>	<p>DATE DECEMBER 2023</p>
<p>DATE 21-12-2023</p>	<p>PROJECT NO. 0243338</p>	<p>SHEET NO. S502</p>	<p>ISSUED BY RICO</p>	<p>PROJECT NO. 0243338</p>	<p>DATE DECEMBER 2023</p>

GENERAL NOTES ON PILING:

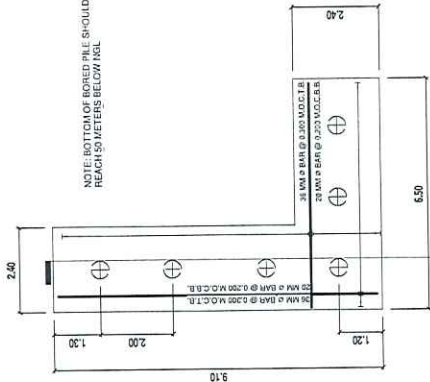
- 1) PILE DESIGN ARE BASED ON THE INFORMATION CONTAINED IN THE FINAL GEOTECHNICAL REPORT SUBMITTED BY INTER-PHIL SURVEY & GEOTECHNICAL SERVICES FOR THE PROPOSED 4 STOREY DORMITORY BUILDING UNIVERSITY OF THE PHILIPPINES, SPP CAMPUS, CEBU CITY.
- 2) CONSTRUCTION OF PILES SHALL BE IN ACCORDANCE WITH THE SPECIFICATIONS AND REQUIREMENTS OF THE PHILIPPINE STANDARD SPECIFICATION FOR CONSTRUCTION OF PILES (PS 101-1999).
- 3) ALL LEVELS SHOWN SHALL BE IN ACCORDANCE WITH THE SPREADSHEET PROVIDED FOR THE CONSTRUCTION OF WORK.
- 4) ALL PILES SHALL BE CAST IN PLACE CONCRETE WITH A MINIMUM COMPRESSIVE STRENGTH OF CONCRETE SHALL BE 34.48 MPa (5000 PSI).
- 5) CEMENT SHALL BE PORTLAND CEMENT TYPE I WITH SILICA FUME OR FLY ASH CONFORMING TO ASTM C150.
- 6) WATER TO CEMENT RATIO SHALL NOT EXCEED 0.45.
- 7) SELECT A PROVEN MIXING MATERIALS CONVENTION NOT TO EXCEED 0.45.
- 8) FOR STRENGTH AND DURABILITY CONSIDERATIONS, ALL PILES SHALL BE CAST WITH A MINIMUM YIELD STRENGTH OF 414 MPa (GRADE 60), CONFORMING TO ASTM A-706.
- 9) ARRANGE FOR CONCRETE TESTS FOR EACH 50m³ OF CONCRETE PLACED IN THE PILES. EACH TEST TO COMPRISE 3 CYLINDERS.
- 10) PROVIDE 28 DAYS COMPRESSIVE CYLINDERS.
- 11) CONTRACTOR TO TAKE NECESSARY PRECAUTION TO AVOID CORROSION OF PILE REINFORCEMENT DURING HANDLING AND PILE CUT-OFF OPERATION LONGITUDINAL ABOVE CUT-OFF LEVEL TO BE WRAPPED BY PRECISO TAPE AFTER PILE HEAD CUT-OFF AS A DOUBLE PROTECTION TO EXPOSED STEEL.
- 12) SPlice REBARS BY LAPPING A MINIMUM OF 50x. MECHANICAL SPlice WARE USED AFTER REVIEWING DRAWING TO THE ENGINEER THAT THE SPlice CAN DEVELOP 1.25x THE SPECIFIED YIELD STRENGTH OF THE BAR.
- 13) SPlice LOCATION SHALL BE STAGGERED, CLOSE COUPLED IF STAGGERED SPACING IS NOT POSSIBLE.
- 14) A GEOTECHNICAL INVESTIGATION REPORT FOR THE SITE SHALL BE UNDERTAKEN AND ONCE AVAILABLE FOR REVIEW DURING THE TENDER PERIOD COPIES OF RELEVANT PORTIONS WILL BE FORWARDED TO THE BIDDING ENGINEER AND ARCHITECT FOR THEIR REVIEW AND APPROVAL.
- 15) ALL LOADS AND REACTION LOAD CAPACITIES ARE BASED ON THEORETICAL CALCULATION AS STATED IN THE PRELIMINARY GEOTECHNICAL REPORT BY INTER-PHIL SURVEY & GEOTECHNICAL SERVICES FOR THE CEBU CITY HALL OF JUSTICE BUILDING.
- 16) BOTTOM OF PILES SHALL BE EMBEDDED AT LEAST THREE (3) TIMES DIAMETER (Ø) INTO HARD STRATA WITH AN R VALUE OF AT LEAST 90 CAPABLE OF DEVELOPING THE REQUIRED ULTIMATE BEARING CAPACITY.
- 17) PILE TESTING:
 - ALL TESTS LISTED BELOW ARE TO BE STRICTLY IMPLEMENTED.
 - ALL CONCRETE CYLINDER CRUSHING TEST AS SPECIFIED
 - INTEGRITY TEST
 - DYNAMIC TEST
 - ALL STATIC LOAD TEST TO BE CONDUCTED BY ANY OF THE LABORATORIES APPROVED BY THE PROJECT MANAGER AFTER OBTAINING PERMISSION FROM THE CONSULTANT.
 - ALL TEST RESULTS ON THE PILING WORKS SHOULD BE SUBMITTED TO THE EMPLOYERS REPRESENTATIVE PRIOR TO CASTING OF FOUNDATION FOR THEIR REVIEW AND APPROVAL AND TO PROCEED FURTHER.
 - THE NUMBERS OF PILES FOR EACH TEST AS FOLLOWS:
 - 81% OF THE TOTAL NUMBER OF WORKING PILES SHALL BE TESTED FOR DYNAMIC TEST IN ACCORDANCE WITH ASTM D4945.
 - 19% OF THE TOTAL NUMBER OF WORKING PILES SHALL BE TESTED FOR INTEGRITY TEST IN ACCORDANCE WITH ASTM D6952/29 PDA & INTEGRITY TEST SHALL BE PERFORMED BY A THIRD PARTY TESTING AGENCY ACCEPTABLE TO EMPLOYERS REPRESENTATIVE & STRUCTURAL CONSULTANT. PILE TO BE TESTED SHALL BE TO THE CONTRARIUM OF STRUCTURAL CONSULTANT UPON INSTALLATION OF PILES.
 - 07% OF THE TOTAL NUMBER OF WORKING PILES SHALL BE TESTED FOR STATIC LOAD TEST IN ACCORDANCE WITH ASTM D1143 & ASTM D3688.
- 18) LOAD TESTING:
 - FOLLOWING LOAD TESTS SHALL BE CARRIED OUT BY THE PILING CONTRACTOR IN ACCORDANCE WITH THE SPECIFICATIONS:
 - 1) TEST PILE SHALL BEACH 18 METERS EMBEDMENT IN SOIL SIMILAR TO LENGTH REQUIRED FOR REGULAR WORKING PILES.
 - 2) WORKING PILE SHALL BE TESTED TO 1.5X WORKING LOAD.
 - 3) PROVIDE PLASTIC CONDUIT TO BARS ABOVE CUT-OFF LEVEL FOR EASY REMOVAL.
 - 4) TOLERANCE IN PLAIN PILE CENTER TO BE NOT MORE THAN 75mm FROM SPECIFIED POSITIONS. VERTICALLY PILE TO BE NOT MORE THAN 1% IN ITS OUT.
 - 5) PROVIDE 100 MILLIMETER CONCRETE BELOW THE PILE CAPS



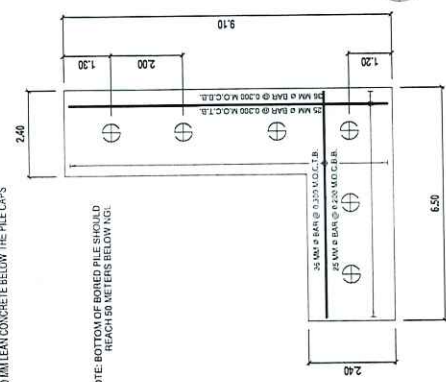
1 PC-1 PILE CAP DETAIL
SCALE 1:50



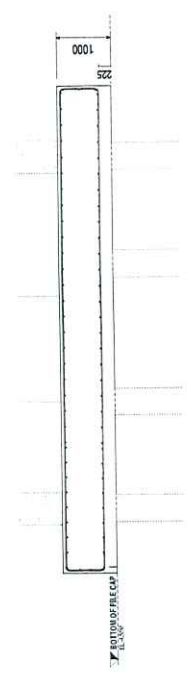
2 PC-2 PILE CAP DETAIL
SCALE 1:75



5 PC-2 AND PC-3 PILE CAP SECTION
SCALE 1:50



4 PC-1 PILE CAP DETAIL
SCALE 1:50



3 PC-3 PILE CAP DETAIL
SCALE 1:75

<p>PALAFOX</p> <p>Address: 54 PACTOYAN CIRCLE Mandaue City 7071, Philippines T: +63202 2324956 F: +63202 22 271 E: info@palafox.com.ph</p>	<p>ROYLENN D. DELA PAZ STRUCTURAL ENGINEER</p> <p>074164 PIR 29 JUNE 2024 129-302-353</p>	<p>PROPOSED UP CEBU DORMITORY SPP CAMPUS, SOUTHWEST PROPERTIES, CEBU CITY CEBU CITY</p>	<p>UNIVERSITY OF THE PHILIPPINES CEBU</p> <p>SHEET CONTENTS</p>	<p>FOR PERMIT ONLY</p>
	<p>DATE: 29 JUNE 2024 DESIGNER: RDP DRAWN BY: VEDWA CHECKED BY: RDP DATE: DECEMBER 2024</p>	<p>PROJECT TITLE: UP CEBU DORMITORY</p>	<p>PROJECT NO.: 042024</p>	<p>SHEET NO.: 042024</p>

FOR PERMIT ONLY


UNIVERSITY OF THE PHILIPPINES - Cebu
OFFICE OF THE CAMPUS ARCHITECT

Project Name: Construction of a Dormitory, UP Cebu
Location: Gorordo Ave., Lahug Cebu City
ABC PhP 63,736,000.00
Duration 180 days


BILL OF QUANTITIES

ITEM. NO.	WORK DESCRIPTION	UNIT	QTY.	UNIT COST	AMOUNT
I	GENERAL REQUIREMENTS	lot	1.00	0.00	0.00
	Sub-total for Item No. I				0.00
II.	STRUCTURAL WORKS				
	1. Earthworks and Excavation	lot	1.00	0.00	0.00
	Sub-total for Item No. II.1				0.00
	2. Foundation (PILE CAP)	lot	1.00	0.00	0.00
	Sub-total for Item No. II.2				0.00
	3. Foundation (PILES)	lot	1.00	0.00	0.00
	Sub-total for Item No. II.3				0.00
	Sub-total for Item No. II				0.00
III.	Superstructure (Slab on Grade)				
	Sub-total for Item No. III	lot	1.00	0.00	0.00
					0.00
IV.	MEPF Stub-outs	lot	1.00	0.00	0.00
	Sub-total for Item No. IV				0.00
V.	Ground Floor Finishing				
	Sub-total for Item No. V	lot	1.00	0.00	0.00
					0.00
	TOTAL PROJECT COST				Php0.00

Prepared by:


Ryan Anthony G. Genobiagon
Jr Managing Architect

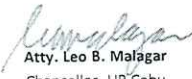
Endorsed by:


Hazel A. Trapero, DIT
Vice Chancellor for Administration
OIC-OCA

Endorsed by:


Engr. Ruel T. Lomod
Sr. Supervising Engineer - UPC-OCA

Endorsed by:


Atty. Leo B. Malagar
Chancellor, UP Cebu

Project Name: Construction of a Dormitory, UP Cebu
Location: Gorordo Ave., Lahug Cebu City
ABC PhP 63,736,000.00
Duration 180 days

UNIT COST ANALYSIS

ITEM I. GENERAL REQUIREMENTS

Quantity: 1
 Unit: Lot

A. Material:					
Description	Qty.	Unit	Unit Cost	Amount	
Mobilization/Demobilization		Lot		-	
Site Clearing		Lot		-	
Removal and Clearing of demolished debris		Lot		-	
Power and water Consumptions		Lot		-	
Bonds and Insurance		Lot		-	
Health, Safety and Environment		Lot		-	
Temporary Facility		Lot		-	
Project Billboard and signage		Lot		-	
Construction waste disposal		Lot		-	
Material Cost:				P	0.00
Total Direct Cost (A+B+C):				P	0.00
Total Cost:				P	0.00
Unit Cost:					-

ITEM II. STRUCTURAL WORKS

1. Earthworks and Excavation

Quantity: 1.00
 Unit: lot

A. Materials:					
Description	Qty.	Unit	Unit Cost	Amount	
Excavation		cu.m.	350.00	-	
Disposal		cu.m.	800.00	-	
Filling		cu.m.	1,200.00	-	
Material Cost:				P	0.00
B. Equipment:					
Description	Qty.	Days	Rental / Day	Amount	
Excavator					
Other Equipmen needed to complete the work					
Equipment Cost:				P	0.00
C. Labor:					
Description	Qty.	Days	Rate/Day	Amount	
Site Engineer				0.00	
Safety officer				0.00	
Foreman				0.00	
Skilled worker					
Laborers					
Labor Cost:				P	0.00
Total Direct Cost (A+B+C):				P	0.00
Indirect Cost:					
Profit 10% of direct cost				P	0.00
OCM 10% of Direct cost				P	0.00
[Sum of (EDC+ OCM + PROFIT) x 12%] TAX				P	0.00
Total Cost:				P	0.00
Unit Cost:					0.00

2. Foundation (PILE CAP)

Quantity: 1
Unit: lot

A. Material:					
Description	Qty.	Unit	Unit Cost	Amount	
Concrete		cu.m.	12,000.00	0.00	
Rebar		kg			
Gravel Bedding		cu.m.			
Other material needed to complete the works					
Material Cost: P					0.00
B. Equipment:					
Description	Qty.	Days	Rate/Day	Amount	
Identify equipment needed					
Equipment Cost: P					0.00
C. Labor:					
Description	Qty.	Days	Rate/Day	Amount	
Site Engineer				0.00	
Safety officer				0.00	
Foreman				0.00	
Skilled worker					
Laborers					
Labor Cost: P					0.00
Total Direct Cost (A+B+C)= P					0.00
Unit Cost =					-

3. Foundation (PILES)

Quantity: 1
Unit: lot

A. Material:					
Description	Qty.	Unit	Unit Cost	Amount	
Concrete		cu.m.		0.00	
Rebar		kg		0.00	
Material Cost: P					0.00
B. Equipment:					
Description	Qty.	Days	Rate/Day	Amount	
Identify equipment needed					
Equipment Cost: P					0.00
C. Labor:					
Description	Qty.	Days	Rate/Day	Amount	
Site Engineer				0.00	
Safety officer				0.00	
Foreman				0.00	
Skilled worker				0.00	
Laborers				0.00	
Labor Cost: P					0.00
Total Direct Cost (A+B+C)= P					0.00
Unit Cost =					-

ITEM III. Superstructure (Slab on Grade)

Quantity: 1
Unit: lot

A. Materials:					
Description	Qty.	Unit	Unit Cost	Amount	
SLAB ON GRADE					
Concrete		cu.m.		0.00	
Rebar		kg		0.00	
Gravel Bedding		cu.m.			
COLUMNS 1st FLET					
Concrete		cu.m.			
Rebar		kg			
Formworks		lot			
2nd FLOOR SLAB					
Concrete		cu.m.			
Rebar		kg			
Formworks		lot			
Water proofing to protect the 2nd floor slab if only phase 02 will have a delay		sq.m.			
Ground Floor Masonry					
Concrete Hollow Blocks (CHB) 6"		pcs			
Rebar		kg			
Concrete Mortar		cu.m.			
Concrete Plastering bothsides		cu.m.			
Material Cost: P					0.00
B. Equipment:					
Description	Qty.	Days	Rental / Day	Amount	
Identify equipment needed					
Equipment Cost: P					0.00
C. Labor:					
Description	Qty.	Days	Rate/Day	Amount	
Site Engineer				0.00	
Safety officer				0.00	
Foreman				0.00	
Skilled worker				0.00	
Laborers				0.00	
Labor Cost: P					0.00
Total Direct Cost (A+B+C)= P					0.00
Indirect Cost:					
Profit 15% of Direct Cost P					0.00
OCM 10% of Direct Cost P					0.00
[Sum of (EDC+ OCM + PROFIT) x 12%] TAX P					0.00
Total Cost = P					0.00
Unit Cost =					0.00

ITEM IV. MEPF Stub-outs

Quantity: 1
Unit: lot

A. Materials:					
Description	Qty.	Unit	Unit Cost	Amount	
Supply and installation of Electrical stub-outs and other needed material stub-out for preparation on the additional floors		lot		0.00	
Supply and installation of Plumbing stub-outs and other needed material stub-out for preparation on the additional floors		lot		0.00	
Supply and installation of Mechanical which includes but not limited to Aircon and Ventilation and Fire Suppression stub-outs and other needed material stub-out for preparation on the additional floors		lot		0.00	
Supply and installation of Electronics which includes but not limited to FDAS, WIFI, CCTV and PAGING SYSTEM stub-outs and other needed material stub-out for preparation on the additional floors		lot		0.00	
Material Cost: P				0.00	
B. Equipment:					
Description	Qty.	Days	Rental/Day	Amount	
Basic Minor Tools					
Equipment Cost: P				0.00	
C. Labor:					
Description	Qty.	Days	Rate/Day	Amount	
Labourers				0.00	
skilled worker				0.00	
Labor Cost: P				0.00	
Total Direct Cost (A+B+C) = P				0.00	
Indirect Cost:					
Profit 10% of direct cost P				0.00	
OCM 10% of Direct Cost P				0.00	
[Sum of (EDC+ OCM + PROFIT) x 12%] TAX P				0.00	
Total Cost = P				0.00	
Unit Cost =				-	

ITEM V. Ground Floor Finishing

Quantity: 1
 Unit: lot

A. Materials:					
Description	Qty.	Unit	Unit Cost	Amount	
Supply and installation of Doors and Windows		units			
Exterior Painting Works		sq.m.			
Interior Painting Works		sq.m.			
Ceiling Works		sq.m.			
				Material Cost: P	0.00
B. Equipment:					
Description	Qty.	Days	Rental/Day	Amount	
				Equipment Cost: P	0.00
C. Labor:					
Description	Qty.	Days	Rate/Day	Amount	
				Labor Cost: P	0.00
				Total Direct Cost (A+B+C)= P	0.00
				Indirect Cost:	
				Profit P	0.00
				OCM P	0.00
				[Sum of (EDC+ OCM + PROFIT) x 12%] TAX P	0.00
				Total Cost = P	0.00
				Unit Cost =	-


Prepared by:


 Ryan Anthony G. Genoblagod
 Jr. Managing Architect

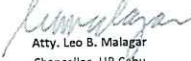
Endorsed by:


 Hazel A. Trapano, DIT
 Vice Chancellor for Administration
 OIC-OCA

Endorsed by:


 Engr. Ruel T. Lomod
 Sr. Supervising Engineer - UPC-OCA

Endorsed by:


 Atty. Leo B. Malagar
 Chancellor, UP Cebu

IX. Checklist of Technical and Financial Documents

I. TECHNICAL COMPONENT ENVELOPE

Class "A" Documents

Legal Documents

- (a) Valid PhilGEPS Registration Certificate (Platinum Membership) (all pages) in accordance with Section 8.5.2 of the IRR;

Technical Documents

- (b) Statement of the prospective bidder of all its ongoing government and private contracts, including contracts awarded but not yet started, if any, whether similar or not similar in nature and complexity to the contract to be bid; **and**
- (c) Statement of the bidder's Single Largest Completed Contract (SLCC) similar to the contract to be bid, except under conditions provided under the rules; **and**
- (d) Special PCAB License in case of Joint Ventures **and** registration for the type and cost of the contract to be bid; **and**
- (e) Original copy of Bid Security. If in the form of a Surety Bond, submit also a certification issued by the Insurance Commission **or** original copy of Notarized Bid Securing Declaration; **and**
- (f) Project Requirements, which shall include the following:
- a. Organizational chart for the contract to be bid;
 - b. List of contractor's key personnel (e.g., Project Manager, Project Engineers, Materials Engineers, and Foremen), to be assigned to the contract to be bid, with their complete qualification and experience data;
 - c. List of contractor's major equipment units, which are owned, leased, and/or under purchase agreements, supported by proof of ownership or certification of availability of equipment from the equipment lessor/vendor for the duration of the project, as the case may be; **and**
 - d. Other documents specified in Clause 21 of BDS and Section VI.Specifications.
- (g) Original duly signed Omnibus Sworn Statement (OSS) **and** if applicable, Original Notarized Secretary's Certificate in case of a corporation, partnership, or cooperative; or Original Special Power of Attorney of all members of the joint venture giving full power and authority to its officer to sign the OSS and do acts to represent the Bidder.

Financial Documents

- (h) The prospective bidder's computation of Net Financial Contracting Capacity (NFCC).

Class "B" Documents

- (i) If applicable, duly signed joint venture agreement (JVA) in accordance with RA No. 4566 and its IRR in case the joint venture is already in existence **or** duly notarized statements from all the potential joint venture partners stating that they will enter into and abide by the provisions of the JVA in the instance that the bid is successful.

II. FINANCIAL COMPONENT ENVELOPE

- (j) Original of duly signed and accomplished Financial Bid Form; **and**

Other documentary requirements under RA No. 9184

- (k) Original of duly signed Bid Prices in the Bill of Quantities; **and**
- (l) Duly accomplished Detailed Estimates Form, including a summary sheet indicating the unit prices of construction materials, labor rates, and equipment rentals used in coming up with the Bid; **and**
- (m) Cash Flow by Quarter.

Republic of the Philippines



Government Procurement Policy Board